

CURRENT SCORE



Purdue

65



Wisconsin

69

February 18, 2020 • Kohl Center (Ab Nicholas Court) - Madison

STATISTICS

Official Box Score
Purdue vs Wisconsin
Game Totals at 00:00 (2nd Period)
February 18, 2020 at Kohl Center (Ab Nicholas Court) - Madison



Purdue 65

No.	Player	S	Pts	FG	3FG	FT	OR	DR	TR	PF	A	TO	Blk	Stl	Min	+/-
02	HUNTER JR., ERIC	G	2	1-4	0-2	0-0	0	0	0	4	1	2	0	1	17	-1
03	PROCTOR, JAHAAAD	G	0	0-4	0-0	0-0	0	3	3	2	2	0	0	0	24	-10
12	BOUDREAUX, EVAN	F	2	1-5	0-2	0-0	1	4	5	1	2	0	0	1	23	-1
20	EASTERN, NOJEL	G	14	6-12	0-0	2-3	3	3	6	3	4	2	0	1	31	8
32	HAARMS, MATT	F	2	1-3	0-0	0-0	0	1	1	4	0	1	0	0	13	-7
01	WHEELER, AARON	F	8	2-5	1-4	3-3	1	3	4	2	0	0	1	0	17	-3
11	THOMPSON, ISAIAH	G	9	3-7	3-5	0-0	1	1	2	1	0	0	0	0	20	-5
50	WILLIAMS, TREVIION	F	17	8-16	0-0	1-2	8	4	12	3	2	2	0	1	27	3
55	STEFANOVIC, SASHA	G	11	3-7	3-6	2-2	1	2	3	4	2	2	0	1	27	-4
	TEAM						0	1	1	0		0				
TOTALS			65	25-63	7-19	8-10	15	22	37	24	13	9	1	5	200	

Shooting By Period

Period	FG	FG%	3FG	3FG%	FT	FT%
1st Half	10-32	31%	2-7	29%	5-6	83%
2nd Half	15-31	48%	5-12	42%	3-4	75%
Game	25-63	39.7%	7-19	36.8%	8-10	80.0%

Deadball Rebounds: 2,0

Last FG: 2nd-00:09

Biggest Run: 9-0

Largest lead: By 2 at 1st-01:48

Technical Fouls: None.

Wisconsin 69

No.	Player	S	Pts	FG	3FG	FT	OR	DR	TR	PF	A	TO	Blk	Stl	Min	+/-
00	TRICE, D'MITRIK	G	8	3-11	2-7	0-0	0	1	1	0	5	3	0	0	33	9
02	FORD, ALEEM	F	19	7-11	5-8	0-0	3	4	7	1	1	1	0	0	33	3
11	POTTER, MICAH	C	0	0-3	0-1	0-0	1	1	2	2	0	1	1	0	16	4
34	DAVISON, BRAD	G	13	3-7	3-5	4-4	1	2	3	3	1	0	0	1	34	-1
35	REUVERS, NATE	F	12	3-10	1-5	5-6	1	5	6	3	2	2	2	0	31	7
01	PRITZL, BREVIN	G	13	2-6	1-5	8-8	2	4	6	1	1	1	0	2	34	0
05	WAHL, TYLER	F	2	1-1	0-0	0-0	0	0	0	2	0	0	0	0	6	-2
12	ANDERSON, TREVOR	G	2	0-1	0-0	2-2	1	1	2	2	3	0	0	0	13	0
	TEAM						1	2	3	0		1				
TOTALS			69	19-50	12-31	19-20	10	20	30	14	13	9	3	3	200	

Shooting By Period

Period	FG	FG%	3FG	3FG%	FT	FT%
1st Half	10-26	38%	6-16	38%	4-4	100%
2nd Half	9-24	38%	6-15	40%	15-16	94%
Game	19-50	38.0%	12-31	38.7%	19-20	95.0%

Deadball Rebounds: 0,3

Last FG: 2nd-05:38

Biggest Run: 9-0

Largest lead: By 13 at 2nd-10:16

Technical Fouls: None.

Game Notes:

Officials: D.J. Carstensen, Chris Beaver, Eric Curry

Attendance: Not Counted Yet

Start Time: 07:01 PM ET

Conference Game;

Score	1st	2nd	TOT
PUR	27	38	65
WIS	30	39	69

PUR led for 0:16. WIS led for 35:54.

Game was tied for 3:50.

Times tied: 1 Lead Changes: 2

Points from	PUR	WIS
In the Paint	34	12
Off Turns	14	11
2nd Chance	19	12
Fast Break	11	7
Bench	45	17

Official Box Score
Purdue vs Wisconsin
First Half Statistics Only
February 18, 2020 at Kohl Center (Ab Nicholas Court) - Madison



Purdue 27

No.	Player	S	Pts	FG	3FG	FT	OR	DR	TR	PF	A	TO	Blk	Stl	Min	+/-
02	HUNTER JR., ERIC	G	0	0-0	0-0	0-0	0	0	0	2	1	2	0	1	10	8
03	PROCTOR, JAHAAAD	G	0	0-2	0-0	0-0	0	2	2	2	2	0	0	0	14	0
12	BOUDREAUX, EVAN	F	0	0-2	0-1	0-0	1	2	3	0	1	0	0	0	12	-5
20	EASTERN, NOJEL	G	7	3-7	0-0	1-1	2	1	3	1	1	0	0	0	13	4
32	HAARMS, MATT	F	0	0-2	0-0	0-0	0	1	1	2	0	0	0	0	7	-5
01	WHEELER, AARON	F	8	2-4	1-3	3-3	1	2	3	1	0	0	0	0	8	2
11	THOMPSON, ISAIAH	G	3	1-5	1-3	0-0	0	1	1	0	0	0	0	0	12	-14
50	WILLIAMS, TREVIION	F	9	4-9	0-0	1-2	5	3	8	1	0	1	0	1	13	2
55	STEFANOVIC, SASHA	G	0	0-1	0-0	0-0	0	0	0	0	0	1	0	0	11	-7
	TEAM						0	1	1	0		0				
TOTALS			27	10-32	2-7	5-6	9	13	22	9	5	4	0	2	100	

Shooting By Period

Period	FG	FG%	3FG	3FG%	FT	FT%
1st Half	10-32	31%	2-7	29%	5-6	83%
Game	25-63	39.7%	7-19	36.8%	8-10	80.0%

Deadball Rebounds: 2,0

Last FG Half: PUR 2nd-00:09

Wisconsin 30

No.	Player	S	Pts	FG	3FG	FT	OR	DR	TR	PF	A	TO	Blk	Stl	Min	+/-
00	TRICE, D'MITRIK	G	5	2-5	1-4	0-0	0	0	0	0	2	1	0	0	15	6
02	FORD, ALEEM	F	14	5-7	4-5	0-0	2	2	4	1	0	1	0	0	17	2
11	POTTER, MICAH	C	0	0-3	0-1	0-0	0	1	1	1	0	1	1	0	10	-3
34	DAVISON, BRAD	G	3	1-4	1-3	0-0	0	1	1	2	1	0	0	0	17	1
35	REUVERS, NATE	F	0	0-3	0-1	0-0	0	2	2	1	1	0	2	0	14	9
01	PRITZL, BREVIN	G	4	1-3	0-2	2-2	0	3	3	0	1	1	0	2	17	3
05	WAHL, TYLER	F	2	1-1	0-0	0-0	0	0	0	2	0	0	0	0	2	-2
12	ANDERSON, TREVOR	G	2	0-0	0-0	2-2	1	0	1	1	2	0	0	0	8	-1
	TEAM						0	2	2	0		0				
TOTALS			30	10-26	6-16	4-4	3	11	14	8	7	4	3	2	100	

Shooting By Period

Period	FG	FG%	3FG	3FG%	FT	FT%
1st Half	10-26	38%	6-16	38%	4-4	100%
Game	19-50	38.0%	12-31	38.7%	19-20	95.0%

Deadball Rebounds: 0,3

Last FG Half: WIS 2nd-05:38

Game Notes:

Officials: D.J. Carstensen, Chris Beaver, Eric Curry
Attendance: Not Counted Yet

Start Time: 07:01 PM ET

Conference Game;

Score	1st	2nd	TOT
PUR	27	38	65
WIS	30	39	69

Points from (This Period)	PUR	WIS
In the Paint	16	8
Off Turns	4	4
2nd Chance	12	3
Fast Break	3	7
Bench	20	8

**Official Play-By-Play
Purdue vs Wisconsin
First Half**

February 18, 2020 at Kohl Center (Ab Nicholas Court) - Madison



Period 1

Starters:

Purdue: 2 HUNTER JR., ERIC (G); 3 PROCTOR, JAHAAAD (G); 12 BOUDREAUX, EVAN (F); 20 EASTERN, NOJEL (G); 32 HAARMS, MATT (F);

Wisconsin: 0 TRICE, D'MITRIK (G); 11 POTTER, MICAH (C); 34 DAVISON, BRAD (G); 35 REUVERS, NATE (F); 2 FORD, ALEEM (F);

Time	VISITORS: Purdue	Score	Margin	HOME: Wisconsin
19:30				MISSED JUMPER by DAVISON, BRAD
19:26	REBOUND (DEF) by HAARMS, MATT			
19:03	FOUL (OFF) by HUNTER JR., ERIC			
19:03	TURNOVER (OFFENSIVE) by HUNTER JR., ERIC			
18:44				MISSED 3PTR by POTTER, MICAH
18:41	REBOUND (DEF) by PROCTOR, JAHAAAD			
18:25	MISSED JUMPER by HAARMS, MATT			
18:21				REBOUND (DEF) by REUVERS, NATE
18:06				FOUL (OFF) by POTTER, MICAH
18:06				TURNOVER (OFFENSIVE) by POTTER, MICAH
17:47	MISSED 3PTR by BOUDREAUX, EVAN			
17:43	REBOUND (OFF) by BOUDREAUX, EVAN			
17:33	MISSED JUMPER by EASTERN, NOJEL			
17:29				REBOUND (DEF) by POTTER, MICAH
17:21	FOUL (PERSONAL) by HUNTER JR., ERIC			
17:21	SUB OUT: HUNTER JR., ERIC			
17:21	SUB IN: THOMPSON, ISIAH			
17:21				SUB OUT: FORD, ALEEM
17:21				SUB IN: PRITZL, BREVIN
17:01		3-0	H 3	GOOD! 3PTR by TRICE, D'MITRIK
16:41	MISSED JUMPER by PROCTOR, JAHAAAD			
16:37				REBOUND (DEF) by REUVERS, NATE
16:27				MISSED 3PTR by REUVERS, NATE
16:24				SUB OUT: REUVERS, NATE
16:24				SUB IN: WAHL, TYLER
16:24	SUB OUT: EASTERN, NOJEL			
16:24	SUB OUT: HAARMS, MATT			
16:24	SUB IN: WILLIAMS, TREVION			
16:24	SUB IN: STEFANOVIC, SASHA			
16:23	REBOUND (DEF) by THOMPSON, ISIAH			
16:08	MISSED JUMPER by WILLIAMS, TREVION			
16:02	REBOUND (OFF) by WILLIAMS, TREVION			
16:02	GOOD! LAYUP by WILLIAMS, TREVION	3-2	H 1	
15:46				MISSED LAYUP by POTTER, MICAH
15:43	REBOUND (DEF) by WILLIAMS, TREVION			
15:25	MISSED JUMPER by WILLIAMS, TREVION			
15:25				BLOCK by POTTER, MICAH
15:20				REBOUND (DEF) by PRITZL, BREVIN
15:16		5-2	H 3	GOOD! LAYUP by WAHL, TYLER [FB]
15:16				ASSIST by PRITZL, BREVIN
14:48				FOUL (PERSONAL) by WAHL, TYLER
14:48				
14:48				SUB OUT: WAHL, TYLER
14:48				SUB OUT: POTTER, MICAH
14:48				SUB OUT: DAVISON, BRAD
14:48				SUB IN: FORD, ALEEM
14:48				SUB IN: ANDERSON, TREVOR
14:48				SUB IN: REUVERS, NATE
14:42	TURNOVER (LOSTBALL) by STEFANOVIC, SASHA			
14:42				STEAL by PRITZL, BREVIN
14:38		7-2	H 5	GOOD! DUNK by PRITZL, BREVIN [FB]
14:18	MISSED JUMPER by PROCTOR, JAHAAAD			
14:15	REBOUND (OFF) by WILLIAMS, TREVION			
14:14	MISSED JUMPER by WILLIAMS, TREVION			
14:14				BLOCK by REUVERS, NATE
14:08	REBOUND (OFF) by WILLIAMS, TREVION			
13:59	GOOD! JUMPER by WILLIAMS, TREVION	7-4	H 3	
13:53		10-4	H 6	GOOD! 3PTR by FORD, ALEEM
13:53				ASSIST by TRICE, D'MITRIK
13:29	MISSED LAYUP by STEFANOVIC, SASHA			
13:28				REBOUND (DEF) by TEAM
13:28				SUB OUT: TRICE, D'MITRIK
13:28				SUB IN: DAVISON, BRAD
13:28	SUB OUT: PROCTOR, JAHAAAD			
13:28	SUB OUT: BOUDREAUX, EVAN			
13:28	SUB IN: WHEELER, AARON			
13:28	SUB IN: EASTERN, NOJEL			
13:15	FOUL (PERSONAL) by WHEELER, AARON			
13:06				MISSED LAYUP by REUVERS, NATE
13:03	REBOUND (DEF) by WILLIAMS, TREVION			

Time	VISITORS: Purdue	Score	Margin	HOME: Wisconsin
12:58	MISSED 3PTR by WHEELER, AARON			
12:55	REBOUND (OFF) by WILLIAMS, TREVION			
12:52				FOUL (PERSONAL) by ANDERSON, TREVOR
12:52	SUB OUT: WILLIAMS, TREVION			
12:52	SUB IN: HAARMS, MATT			
12:44	MISSED JUMPER by THOMPSON, ISAIAH			
12:43				REBOUND (DEF) by TEAM
12:43	FOUL (PERSONAL) by HAARMS, MATT			
12:30				MISSED LAYUP by FORD, ALEEM
12:27				REBOUND (OFF) by FORD, ALEEM
12:15		13-4	H 9	GOOD! 3PTR by FORD, ALEEM
12:15				ASSIST by ANDERSON, TREVOR
11:59	GOOD! 3PTR by THOMPSON, ISAIAH	13-7	H 6	
11:34				MISSED JUMPER by REUVERS, NATE
11:30				REBOUND (OFF) by ANDERSON, TREVOR
11:27				MISSED 3PTR by PRITZL, BREVIN
11:25				REBOUND (OFF) by FORD, ALEEM
11:25	FOUL (PERSONAL) by EASTERN, NOJEL			
11:25				
11:25				SUB OUT: ANDERSON, TREVOR
11:25				SUB OUT: REUVERS, NATE
11:25				SUB IN: TRICE, D'MITRIK
11:25				SUB IN: POTTER, MICAH
11:25	SUB OUT: THOMPSON, ISAIAH			
11:25	SUB IN: HUNTER JR., ERIC			
11:06				TURNOVER (BADPASS) by FORD, ALEEM
11:06	STEAL by HUNTER JR., ERIC			
10:51	TURNOVER (LOSTBALL) by HUNTER JR., ERIC			
10:51				STEAL by PRITZL, BREVIN
10:45				MISSED 3PTR by TRICE, D'MITRIK
10:42	REBOUND (DEF) by WHEELER, AARON			
10:32	MISSED JUMPER by EASTERN, NOJEL			
10:30				REBOUND (DEF) by TEAM
10:30				SUB OUT: FORD, ALEEM
10:30				SUB IN: WAHL, TYLER
10:30	SUB OUT: WHEELER, AARON			
10:30	SUB OUT: HAARMS, MATT			
10:30	SUB OUT: STEFANOVIC, SASHA			
10:30	SUB IN: PROCTOR, JAHAAH			
10:30	SUB IN: BOUDREAUX, EVAN			
10:30	SUB IN: WILLIAMS, TREVION			
09:47				MISSED 3PTR by DAVISON, BRAD
09:43	REBOUND (DEF) by PROCTOR, JAHAAH			
09:39	GOOD! LAYUP by EASTERN, NOJEL [FB]	13-9	H 4	
09:39	ASSIST by PROCTOR, JAHAAH			
09:39				FOUL (PERSONAL) by WAHL, TYLER
09:39				SUB OUT: WAHL, TYLER
09:39				SUB OUT: POTTER, MICAH
09:39				SUB IN: FORD, ALEEM
09:39				SUB IN: REUVERS, NATE
09:39	GOOD! FT by EASTERN, NOJEL [FB]	13-10	H 3	
09:13				MISSED 3PTR by PRITZL, BREVIN
09:10	REBOUND (DEF) by EASTERN, NOJEL			
09:04	MISSED JUMPER by EASTERN, NOJEL			
08:59	REBOUND (OFF) by EASTERN, NOJEL			
08:59	GOOD! LAYUP by EASTERN, NOJEL	13-12	H 1	
08:47	FOUL (PERSONAL) by PROCTOR, JAHAAH			
08:47	SUB OUT: EASTERN, NOJEL			
08:47	SUB IN: THOMPSON, ISAIAH			
08:37				MISSED 3PTR by TRICE, D'MITRIK
08:34	REBOUND (DEF) by BOUDREAUX, EVAN			
08:12	MISSED JUMPER by BOUDREAUX, EVAN			
08:08				REBOUND (DEF) by PRITZL, BREVIN
07:55				MISSED 3PTR by DAVISON, BRAD
07:52	REBOUND (DEF) by WILLIAMS, TREVION			
07:31	MISSED 3PTR by THOMPSON, ISAIAH			
07:26				REBOUND (DEF) by FORD, ALEEM
07:13		16-12	H 4	GOOD! 3PTR by DAVISON, BRAD
07:13				ASSIST by REUVERS, NATE
06:49				FOUL (PERSONAL) by REUVERS, NATE
06:49				
06:49				SUB OUT: DAVISON, BRAD
06:49				SUB IN: ANDERSON, TREVOR
06:49	SUB OUT: HUNTER JR., ERIC			
06:49	SUB IN: STEFANOVIC, SASHA			
06:43	GOOD! JUMPER by WILLIAMS, TREVION [PNT]	16-14	H 2	
06:43	ASSIST by BOUDREAUX, EVAN			
06:25				TURNOVER (TRAVEL) by TRICE, D'MITRIK
06:14				FOUL (PERSONAL) by FORD, ALEEM
06:14	MISSED FT by WILLIAMS, TREVION			

Time	VISITORS: Purdue	Score	Margin	HOME: Wisconsin
06:14	REBOUND (OFF) by TEAM			
06:14	GOOD! FT by WILLIAMS, TREVION	16-15	H 1	
06:14	SUB OUT: WILLIAMS, TREVION			
06:14	SUB IN: HAARMS, MATT			
05:51		18-15	H 3	GOOD! DUNK by FORD, ALEEM
05:51				ASSIST by ANDERSON, TREVOR
05:36	MISSED JUMPER by HAARMS, MATT			
05:32				REBOUND (DEF) by PRITZL, BREVIN
05:12	FOUL (PERSONAL) by HAARMS, MATT			
05:12				SUB OUT: TRICE, D'MITRIK
05:12				SUB IN: DAVISON, BRAD
05:12	SUB OUT: HAARMS, MATT			
05:12	SUB IN: WILLIAMS, TREVION			
05:12		19-15	H 4	GOOD! FT by PRITZL, BREVIN
05:12				SUB OUT: REUVERS, NATE
05:12				SUB IN: POTTER, MICAH
05:12		20-15	H 5	GOOD! FT by PRITZL, BREVIN
04:54	MISSED JUMPER by WILLIAMS, TREVION			
04:50				REBOUND (DEF) by FORD, ALEEM
04:44				MISSED 3PTR by FORD, ALEEM
04:39	REBOUND (DEF) by BOUDREAUX, EVAN			
04:36	FOUL (OFF) by WILLIAMS, TREVION			
04:36	TURNOVER (OFFENSIVE) by WILLIAMS, TREVION			
04:36	SUB OUT: THOMPSON, ISAIAH			
04:36	SUB OUT: BOUDREAUX, EVAN			
04:36	SUB IN: WHEELER, AARON			
04:36	SUB IN: EASTERN, NOJEL			
04:16	FOUL (PERSONAL) by PROCTOR, JAHAAAD			
04:16	SUB OUT: STEFANOVIC, SASHA			
04:16	SUB IN: HUNTER JR., ERIC			
04:16		21-15	H 6	GOOD! FT by ANDERSON, TREVOR
04:16		22-15	H 7	GOOD! FT by ANDERSON, TREVOR
03:58	GOOD! JUMPER by EASTERN, NOJEL [PNT]	22-17	H 5	
03:42				TURNOVER (BADPASS) by PRITZL, BREVIN
03:42	STEAL by WILLIAMS, TREVION			
03:25	MISSED LAYUP by EASTERN, NOJEL			
03:23	REBOUND (OFF) by WHEELER, AARON			
03:20	GOOD! 3PTR by WHEELER, AARON	22-20	H 2	
03:20	ASSIST by PROCTOR, JAHAAAD			
02:57				MISSED JUMPER by POTTER, MICAH
02:53	REBOUND (DEF) by WHEELER, AARON			
02:39	GOOD! DUNK by WILLIAMS, TREVION	22-22	T	
02:39	ASSIST by HUNTER JR., ERIC			
02:38				TIMEOUT 30SEC
02:38				SUB OUT: POTTER, MICAH
02:38				SUB OUT: ANDERSON, TREVOR
02:38				SUB IN: TRICE, D'MITRIK
02:38				SUB IN: REUVERS, NATE
02:38	SUB OUT: PROCTOR, JAHAAAD			
02:38	SUB IN: STEFANOVIC, SASHA			
02:07				MISSED 3PTR by TRICE, D'MITRIK
02:04	REBOUND (DEF) by TEAM			
01:48				FOUL (PERSONAL) by DAVISON, BRAD
01:48	GOOD! FT by WHEELER, AARON	22-23	V 1	
01:48	SUB OUT: HUNTER JR., ERIC			
01:48	SUB IN: THOMPSON, ISAIAH			
01:48	GOOD! FT by WHEELER, AARON	22-24	V 2	
01:32		25-24	H 1	GOOD! 3PTR by FORD, ALEEM
01:32				ASSIST by DAVISON, BRAD
01:05	MISSED LAYUP by THOMPSON, ISAIAH			
01:05				BLOCK by REUVERS, NATE
00:59				REBOUND (DEF) by DAVISON, BRAD
00:57		28-24	H 4	GOOD! 3PTR by FORD, ALEEM [FB]
00:57				ASSIST by TRICE, D'MITRIK
00:56	TIMEOUT 30SEC			
00:38	MISSED 3PTR by WHEELER, AARON			
00:35	REBOUND (OFF) by EASTERN, NOJEL			
00:34	GOOD! DUNK by WHEELER, AARON	28-26	H 2	
00:34	ASSIST by EASTERN, NOJEL			
00:34				FOUL (PERSONAL) by DAVISON, BRAD
00:34	GOOD! FT by WHEELER, AARON	28-27	H 1	
00:07		30-27	H 3	GOOD! LAYUP by TRICE, D'MITRIK
00:01	MISSED 3PTR by THOMPSON, ISAIAH			
00:00	REBOUND (OFF) by WILLIAMS, TREVION			
00:00	MISSED LAYUP by WILLIAMS, TREVION			
00:00				REBOUND (DEF) by TEAM

Purdue 27, Wisconsin 30

Points from (This Period)	PUR	WIS
In the Paint	16	8
Off Turns	4	4
2nd Chance	12	3
Fast Break	3	7
Bench	20	8

Official Box Score
Purdue vs Wisconsin
Second Half Statistics Only
February 18, 2020 at Kohl Center (Ab Nicholas Court) - Madison



Purdue 38

No.	Player	S	Pts	FG	3FG	FT	OR	DR	TR	PF	A	TO	Blk	Stl	Min	+/-
02	HUNTER JR., ERIC	G	2	1-4	0-2	0-0	0	0	0	2	0	0	0	0	8	-9
03	PROCTOR, JAHAAAD	G	0	0-2	0-0	0-0	0	1	1	0	0	0	0	0	10	-10
12	BOUDREAUX, EVAN	F	2	1-3	0-1	0-0	0	2	2	1	1	0	0	1	11	4
20	EASTERN, NOJEL	G	7	3-5	0-0	1-2	1	2	3	2	3	2	0	1	18	4
32	HAARMS, MATT	F	2	1-1	0-0	0-0	0	0	0	2	0	1	0	0	6	-2
01	WHEELER, AARON	F	0	0-1	0-1	0-0	0	1	1	1	0	0	1	0	9	-5
11	THOMPSON, ISAIAH	G	6	2-2	2-2	0-0	1	0	1	1	0	0	0	0	8	9
50	WILLIAMS, TREVION	F	8	4-7	0-0	0-0	3	1	4	2	2	1	0	0	14	1
55	STEFANOVIC, SASHA	G	11	3-6	3-6	2-2	1	2	3	4	2	1	0	1	16	3
TEAM							0	0	0	0		0				
TOTALS			38	15-31	5-12	3-4	6	9	15	15	8	5	1	3	100	

Shooting By Period

Period	FG	FG%	3FG	3FG%	FT	FT%
2nd Half	15-31	48%	5-12	42%	3-4	75%
Game	25-63	39.7%	7-19	36.8%	8-10	80.0%

Deadball Rebounds: 2,0

Last FG Half: PUR -

Wisconsin 39

No.	Player	S	Pts	FG	3FG	FT	OR	DR	TR	PF	A	TO	Blk	Stl	Min	+/-
00	TRICE, D'MITRIK	G	3	1-6	1-3	0-0	0	1	1	0	3	2	0	0	18	3
02	FORD, ALEEM	F	5	2-4	1-3	0-0	1	2	3	0	1	0	0	0	17	1
11	POTTER, MICAH	C	0	0-0	0-0	0-0	1	0	1	1	0	0	0	0	7	7
34	DAVISON, BRAD	G	10	2-3	2-2	4-4	1	1	2	1	0	0	0	1	17	-2
35	REUVERS, NATE	F	12	3-7	1-4	5-6	1	3	4	2	1	2	0	0	17	-2
01	PRITZL, BREVIN	G	9	1-3	1-3	6-6	2	1	3	1	0	0	0	0	16	-3
05	WAHL, TYLER	F	0	0-0	0-0	0-0	0	0	0	0	0	0	0	0	3	0
12	ANDERSON, TREVOR	G	0	0-1	0-0	0-0	0	1	1	1	1	0	0	0	5	1
TEAM							1	0	1	0		1				
TOTALS			39	9-24	6-15	15-16	7	9	16	6	6	5	0	1	100	

Shooting By Period

Period	FG	FG%	3FG	3FG%	FT	FT%
2nd Half	9-24	38%	6-15	40%	15-16	94%
Game	19-50	38.0%	12-31	38.7%	19-20	95.0%

Deadball Rebounds: 0,3

Last FG Half: WIS -

Game Notes:

Officials: D.J. Carstensen, Chris Beaver, Eric Curry

Attendance: Not Counted Yet

Start Time: 07:01 PM ET

Conference Game;

Score	1st	2nd	TOT
PUR	27	38	65
WIS	30	39	69

Points from (This Period)	PUR	WIS
In the Paint	18	4
Off Turns	10	7
2nd Chance	7	9
Fast Break	8	0
Bench	25	9

**Official Play-By-Play
Purdue vs Wisconsin
Second Half**

February 18, 2020 at Kohl Center (Ab Nicholas Court) - Madison



Period 2

Starters:

Purdue: 2 HUNTER JR., ERIC (G); 3 PROCTOR, JAHAAAD (G); 12 BOUDREAU, EVAN (F); 20 EASTERN, NOJEL (G); 32 HAARMS, MATT (F);

Wisconsin: 0 TRICE, D'MITRIK (G); 11 POTTER, MICAH (C); 34 DAVISON, BRAD (G); 35 REUVERS, NATE (F); 2 FORD, ALEEM (F);

Time	VISITORS: Purdue	Score	Margin	HOME: Wisconsin
20:00				SUB OUT: PRITZL, BREVIN
20:00				SUB IN: POTTER, MICAH
20:00	SUB OUT: WHEELER, AARON			
20:00	SUB OUT: THOMPSON, ISAIAH			
20:00	SUB OUT: WILLIAMS, TREVION			
20:00	SUB OUT: STEFANOVIC, SASHA			
20:00	SUB IN: HUNTER JR., ERIC			
20:00	SUB IN: PROCTOR, JAHAAAD			
20:00	SUB IN: BOUDREAU, EVAN			
20:00	SUB IN: HAARMS, MATT			
19:51	MISSED LAYUP by EASTERN, NOJEL			
19:46				REBOUND (DEF) by FORD, ALEEM
19:31	FOUL (PERSONAL) by BOUDREAU, EVAN			
19:27				MISSED JUMPER by TRICE, D'MITRIK
19:24	REBOUND (DEF) by PROCTOR, JAHAAAD			
19:00	MISSED 3PTR by HUNTER JR., ERIC			
18:56				REBOUND (DEF) by REUVERS, NATE
18:44				TURNOVER (BADPASS) by REUVERS, NATE
18:17	MISSED LAYUP by HUNTER JR., ERIC			
18:17	REBOUND (OFF) by TEAM			
18:17				FOUL (PERSONAL) by POTTER, MICAH
18:09	TURNOVER (LOSTBALL) by HAARMS, MATT			
17:52	FOUL (PERSONAL) by HUNTER JR., ERIC			
17:49		33-27	H 6	GOOD! 3PTR by REUVERS, NATE
17:49				ASSIST by TRICE, D'MITRIK
17:24	GOOD! DUNK by HAARMS, MATT	33-29	H 4	
17:24	ASSIST by BOUDREAU, EVAN			
16:59		36-29	H 7	GOOD! 3PTR by DAVISON, BRAD
16:59				ASSIST by TRICE, D'MITRIK
16:35	TURNOVER (BADPASS) by EASTERN, NOJEL			
16:35				STEAL by DAVISON, BRAD
16:23				MISSED 3PTR by REUVERS, NATE
16:20				REBOUND (OFF) by POTTER, MICAH
16:12	FOUL (PERSONAL) by HAARMS, MATT			
16:12				SUB OUT: POTTER, MICAH
16:12				SUB IN: PRITZL, BREVIN
16:12	SUB OUT: BOUDREAU, EVAN			
16:12	SUB OUT: EASTERN, NOJEL			
16:12	SUB OUT: HAARMS, MATT			
16:12	SUB IN: WHEELER, AARON			
16:12	SUB IN: WILLIAMS, TREVION			
16:12	SUB IN: STEFANOVIC, SASHA			
16:07		38-29	H 9	GOOD! JUMPER by REUVERS, NATE [PNT]
15:48	FOUL (OFF) by WILLIAMS, TREVION			
15:48	TURNOVER (OFFENSIVE) by WILLIAMS, TREVION			
15:48				
15:33		40-29	H 11	GOOD! DUNK by FORD, ALEEM
15:33				ASSIST by TRICE, D'MITRIK
15:11				FOUL (PERSONAL) by PRITZL, BREVIN
15:09	MISSED JUMPER by PROCTOR, JAHAAAD			
15:05				REBOUND (DEF) by TRICE, D'MITRIK
14:53	FOUL (PERSONAL) by WILLIAMS, TREVION			
14:53		41-29	H 12	GOOD! FT by REUVERS, NATE
14:53				SUB OUT: TRICE, D'MITRIK
14:53				SUB OUT: FORD, ALEEM
14:53				SUB IN: WAHL, TYLER
14:53				SUB IN: ANDERSON, TREVOR
14:53		42-29	H 13	GOOD! FT by REUVERS, NATE
14:40	MISSED JUMPER by PROCTOR, JAHAAAD			
14:35	REBOUND (OFF) by WILLIAMS, TREVION			
14:35	GOOD! LAYUP by WILLIAMS, TREVION	42-31	H 11	
14:14	FOUL (PERSONAL) by HUNTER JR., ERIC			
14:14	SUB OUT: HUNTER JR., ERIC			
14:14	SUB IN: EASTERN, NOJEL			
13:53				TURNOVER (SHOTCLOCK) by TEAM
13:40	GOOD! 3PTR by STEFANOVIC, SASHA	42-34	H 8	
13:40	ASSIST by EASTERN, NOJEL			
13:09		45-34	H 11	GOOD! 3PTR by DAVISON, BRAD
13:09				ASSIST by REUVERS, NATE
12:50				FOUL (PERSONAL) by REUVERS, NATE

Time	VISITORS: Purdue	Score	Margin	HOME: Wisconsin
12:50	GOOD! FT by STEFANOVIC, SASHA	45-35	H 10	
12:50				SUB OUT: REUVERS, NATE
12:50				SUB IN: POTTER, MICAH
12:50				SUB OUT: DAVISON, BRAD
12:50				SUB IN: TRICE, D'MITRIK
12:50	GOOD! FT by STEFANOVIC, SASHA	45-36	H 9	
12:27				MISSED LAYUP by ANDERSON, TREVOR
12:27	BLOCK by WHEELER, AARON			
12:27				REBOUND (OFF) by TEAM
12:25		48-36	H 12	GOOD! 3PTR by PRITZL, BREVIN
12:25				ASSIST by ANDERSON, TREVOR
11:57	MISSED 3PTR by WHEELER, AARON			
11:53				REBOUND (DEF) by PRITZL, BREVIN
11:33				MISSED 3PTR by PRITZL, BREVIN
11:31	REBOUND (DEF) by WHEELER, AARON			
11:27				FOUL (PERSONAL) by ANDERSON, TREVOR
11:27				
11:27				SUB OUT: WAHL, TYLER
11:27				SUB IN: FORD, ALEEM
11:27	SUB OUT: WHEELER, AARON			
11:27	SUB IN: BOUDREAUX, EVAN			
11:09	MISSED LAYUP by WILLIAMS, TREVION			
11:06				REBOUND (DEF) by ANDERSON, TREVOR
10:48				TURNOVER (BADPASS) by TRICE, D'MITRIK
10:48	STEAL by EASTERN, NOJEL			
10:43	GOOD! LAYUP by BOUDREAUX, EVAN [FB]	48-38	H 10	
10:43	ASSIST by WILLIAMS, TREVION			
10:16		51-38	H 13	GOOD! 3PTR by FORD, ALEEM
09:57				SUB OUT: POTTER, MICAH
09:57				SUB OUT: ANDERSON, TREVOR
09:57				SUB IN: DAVISON, BRAD
09:57				SUB IN: REUVERS, NATE
09:57	SUB OUT: PROCTOR, JAHAAAD			
09:57	SUB IN: THOMPSON, ISIAAH			
09:54	FOUL (OFF) by EASTERN, NOJEL			
09:54	TURNOVER (OFFENSIVE) by EASTERN, NOJEL			
09:37				MISSED 3PTR by REUVERS, NATE
09:34	REBOUND (DEF) by EASTERN, NOJEL			
09:14	GOOD! JUMPER by WILLIAMS, TREVION [PNT]	51-40	H 11	
08:53				MISSED 3PTR by FORD, ALEEM
08:50	REBOUND (DEF) by WILLIAMS, TREVION			
08:36	GOOD! 3PTR by THOMPSON, ISIAAH	51-43	H 8	
08:36	ASSIST by STEFANOVIC, SASHA			
08:15	SUB OUT: WILLIAMS, TREVION			
08:15	SUB IN: HAARMS, MATT			
08:13				MISSED JUMPER by DAVISON, BRAD
08:10	REBOUND (DEF) by BOUDREAUX, EVAN			
08:06	MISSED 3PTR by BOUDREAUX, EVAN			
08:02	REBOUND (OFF) by STEFANOVIC, SASHA			
08:01	FOUL (OFF) by STEFANOVIC, SASHA			
08:01	TURNOVER (OFFENSIVE) by STEFANOVIC, SASHA			
07:40				TURNOVER (BADPASS) by REUVERS, NATE
07:40	STEAL by STEFANOVIC, SASHA			
07:32	GOOD! LAYUP by EASTERN, NOJEL [PNT]	51-45	H 6	
07:32				FOUL (PERSONAL) by DAVISON, BRAD
07:32				
07:32	MISSED FT by EASTERN, NOJEL			
07:31				REBOUND (DEF) by DAVISON, BRAD
07:17		54-45	H 9	GOOD! 3PTR by TRICE, D'MITRIK
07:17				ASSIST by FORD, ALEEM
06:56	MISSED JUMPER by EASTERN, NOJEL			
06:53				REBOUND (DEF) by REUVERS, NATE
06:40				TURNOVER (BADPASS) by TRICE, D'MITRIK
06:40	STEAL by BOUDREAUX, EVAN			
06:36	GOOD! 3PTR by THOMPSON, ISIAAH [FB]	54-48	H 6	
06:36	ASSIST by EASTERN, NOJEL			
06:20	FOUL (PERSONAL) by HAARMS, MATT			
06:20	SUB OUT: HAARMS, MATT			
06:20	SUB IN: WILLIAMS, TREVION			
06:20		55-48	H 7	GOOD! FT by REUVERS, NATE
06:20				MISSED FT by REUVERS, NATE
06:19	REBOUND (DEF) by BOUDREAUX, EVAN			
06:03	MISSED LAYUP by BOUDREAUX, EVAN			
06:03				REBOUND (DEF) by FORD, ALEEM
05:38		57-48	H 9	GOOD! JUMPER by REUVERS, NATE
05:16	MISSED JUMPER by WILLIAMS, TREVION			
05:09	REBOUND (OFF) by EASTERN, NOJEL			
05:09	GOOD! DUNK by EASTERN, NOJEL	57-50	H 7	
04:53				MISSED 3PTR by REUVERS, NATE
04:50	REBOUND (DEF) by STEFANOVIC, SASHA			

Time	VISITORS: Purdue	Score	Margin	HOME: Wisconsin
04:45	GOOD! 3PTR by STEFANOVIC, SASHA	57-53	H 4	
04:45	ASSIST by EASTERN, NOJEL			
04:29				TIMEOUT 30SEC
04:29	SUB OUT: THOMPSON, ISIAIAH			
04:29	SUB OUT: BOUDREAUX, EVAN			
04:29	SUB IN: WHEELER, AARON			
04:29	SUB IN: HUNTER JR., ERIC			
04:08				MISSED JUMPER by REUVERS, NATE
04:04				REBOUND (OFF) by FORD, ALEEM
03:44				MISSED JUMPER by TRICE, D'MITRIK
03:44				REBOUND (OFF) by REUVERS, NATE
03:44	FOUL (PERSONAL) by WHEELER, AARON			
03:44				
03:44		58-53	H 5	GOOD! FT by REUVERS, NATE
03:44		59-53	H 6	GOOD! FT by REUVERS, NATE
03:43	SUB OUT: HUNTER JR., ERIC			
03:43	SUB IN: THOMPSON, ISIAIAH			
03:33	MISSED JUMPER by WILLIAMS, TREVION			
03:29				REBOUND (DEF) by REUVERS, NATE
03:03				MISSED 3PTR by FORD, ALEEM
02:59				REBOUND (OFF) by PRITZL, BREVIN
02:42				MISSED 3PTR by PRITZL, BREVIN
02:39	REBOUND (DEF) by EASTERN, NOJEL			
02:34	GOOD! LAYUP by EASTERN, NOJEL [FB/PNT]	59-55	H 4	
02:34				FOUL (PERSONAL) by REUVERS, NATE
02:34	SUB OUT: THOMPSON, ISIAIAH			
02:34	SUB IN: HUNTER JR., ERIC			
02:34	GOOD! FT by EASTERN, NOJEL [FB]	59-56	H 3	
02:05				MISSED JUMPER by TRICE, D'MITRIK
02:03				REBOUND (OFF) by PRITZL, BREVIN
02:03	FOUL (PERSONAL) by STEFANOVIC, SASHA			
02:03		60-56	H 4	GOOD! FT by PRITZL, BREVIN
02:03	SUB OUT: HUNTER JR., ERIC			
02:03	SUB IN: THOMPSON, ISIAIAH			
02:03		61-56	H 5	GOOD! FT by PRITZL, BREVIN
01:58	TIMEOUT 30SEC			
01:48	MISSED 3PTR by STEFANOVIC, SASHA			
01:42	REBOUND (OFF) by WILLIAMS, TREVION			
01:41	GOOD! 3PTR by STEFANOVIC, SASHA	61-59	H 2	
01:41	ASSIST by WILLIAMS, TREVION			
01:08				MISSED 3PTR by TRICE, D'MITRIK
01:05				REBOUND (OFF) by DAVISON, BRAD
01:00				TIMEOUT 30SEC
01:00	SUB OUT: THOMPSON, ISIAIAH			
01:00	SUB IN: HUNTER JR., ERIC			
00:50				MISSED 3PTR by TRICE, D'MITRIK
00:45	REBOUND (DEF) by STEFANOVIC, SASHA			
00:42	TIMEOUT TEAM			
00:42	SUB OUT: HUNTER JR., ERIC			
00:42	SUB IN: THOMPSON, ISIAIAH			
00:37	MISSED 3PTR by STEFANOVIC, SASHA			
00:32	REBOUND (OFF) by THOMPSON, ISIAIAH			
00:30	MISSED 3PTR by STEFANOVIC, SASHA			
00:29				REBOUND (DEF) by TEAM
00:28	FOUL (PERSONAL) by EASTERN, NOJEL			
00:28		62-59	H 3	GOOD! FT by DAVISON, BRAD
00:28		63-59	H 4	GOOD! FT by DAVISON, BRAD
00:26	TIMEOUT 30SEC			
00:24	GOOD! JUMPER by WILLIAMS, TREVION	63-61	H 2	
00:23	FOUL (PERSONAL) by STEFANOVIC, SASHA			
00:23		64-61	H 3	GOOD! FT by PRITZL, BREVIN
00:23	SUB OUT: EASTERN, NOJEL			
00:23	SUB IN: HUNTER JR., ERIC			
00:23		65-61	H 4	GOOD! FT by PRITZL, BREVIN
00:16	GOOD! LAYUP by HUNTER JR., ERIC	65-63	H 2	
00:16	FOUL (PERSONAL) by THOMPSON, ISIAIAH			
00:16		66-63	H 3	GOOD! FT by DAVISON, BRAD
00:16		67-63	H 4	GOOD! FT by DAVISON, BRAD
00:09	GOOD! DUNK by WILLIAMS, TREVION [PNT]	67-65	H 2	
00:09	ASSIST by STEFANOVIC, SASHA			
00:07	FOUL (PERSONAL) by STEFANOVIC, SASHA			
00:07		68-65	H 3	GOOD! FT by PRITZL, BREVIN
00:07		69-65	H 4	GOOD! FT by PRITZL, BREVIN
00:01	MISSED 3PTR by HUNTER JR., ERIC			
00:00	REBOUND (OFF) by WILLIAMS, TREVION			

Purdue 65, Wisconsin 69

Points from (This Period)	PUR	WIS
In the Paint	18	4
Off Turns	10	7
2nd Chance	7	9
Fast Break	8	0
Bench	25	9

Official Scoring/Possession Reference Chart
Purdue vs Wisconsin
Period 1
February 18, 2020 at Kohl Center (Ab Nicholas Court) - Madison



Period 1

Starters:

Purdue: 2 HUNTER JR., ERIC (G); 3 PROCTOR, JAHAAAD (G); 12 BOUDREAUX, EVAN (F); 20 EASTERN, NOJEL (G); 32 HAARMS, MATT (F);

Wisconsin: 0 TRICE, D'MITRIK (G); 11 POTTER, MICAH (C); 34 DAVISON, BRAD (G); 35 REUVERS, NATE (F); 2 FORD, ALEEM (F);

Time	VISITORS: Purdue	Score	Margin	HOME: Wisconsin
17:01		3-0	H 3	GOOD! 3PTR by TRICE, D'MITRIK
16:02	GOOD! LAYUP by WILLIAMS, TREVION	3-2	H 1	
15:16		5-2	H 3	GOOD! LAYUP by WAHL, TYLER [FB]
14:38		7-2	H 5	GOOD! DUNK by PRITZL, BREVIN [FB]
13:59	GOOD! JUMPER by WILLIAMS, TREVION	7-4	H 3	
13:53		10-4	H 6	GOOD! 3PTR by FORD, ALEEM
12:15		13-4	H 9	GOOD! 3PTR by FORD, ALEEM
11:59	GOOD! 3PTR by THOMPSON, ISAIAH	13-7	H 6	
09:39	GOOD! LAYUP by EASTERN, NOJEL [FB]	13-9	H 4	
09:39	GOOD! FT by EASTERN, NOJEL [FB]	13-10	H 3	
08:59	GOOD! LAYUP by EASTERN, NOJEL	13-12	H 1	
07:13		16-12	H 4	GOOD! 3PTR by DAVISON, BRAD
06:43	GOOD! JUMPER by WILLIAMS, TREVION [PNT]	16-14	H 2	
06:14	GOOD! FT by WILLIAMS, TREVION	16-15	H 1	
05:51		18-15	H 3	GOOD! DUNK by FORD, ALEEM
05:12		19-15	H 4	GOOD! FT by PRITZL, BREVIN
05:12		20-15	H 5	GOOD! FT by PRITZL, BREVIN
04:16		21-15	H 6	GOOD! FT by ANDERSON, TREVOR
04:16		22-15	H 7	GOOD! FT by ANDERSON, TREVOR
03:58	GOOD! JUMPER by EASTERN, NOJEL [PNT]	22-17	H 5	
03:20	GOOD! 3PTR by WHEELER, AARON	22-20	H 2	
02:39	GOOD! DUNK by WILLIAMS, TREVION	22-22	T	
01:48	GOOD! FT by WHEELER, AARON	22-23	V 1	
01:48	GOOD! FT by WHEELER, AARON	22-24	V 2	
01:32		25-24	H 1	GOOD! 3PTR by FORD, ALEEM
00:57		28-24	H 4	GOOD! 3PTR by FORD, ALEEM [FB]
00:34	GOOD! DUNK by WHEELER, AARON	28-26	H 2	
00:34	GOOD! FT by WHEELER, AARON	28-27	H 1	
00:07		30-27	H 3	GOOD! LAYUP by TRICE, D'MITRIK

Purdue 27, Wisconsin 30

Official Scoring/Possession Reference Chart
Purdue vs Wisconsin
Period 2
February 18, 2020 at Kohl Center (Ab Nicholas Court) - Madison



Period 2

Starters:

Purdue: 2 HUNTER JR., ERIC (G); 3 PROCTOR, JAHAAAD (G); 12 BOUDREAU, EVAN (F); 20 EASTERN, NOJEL (G); 32 HAARMS, MATT (F);
Wisconsin: 0 TRICE, D'MITRIK (G); 11 POTTER, MICAH (C); 34 DAVISON, BRAD (G); 35 REUVERS, NATE (F); 2 FORD, ALEEM (F);

Time	VISITORS: Purdue	Score	Margin	HOME: Wisconsin
17:49		33-27	H 6	GOOD! 3PTR by REUVERS, NATE
17:24	GOOD! DUNK by HAARMS, MATT	33-29	H 4	
16:59		36-29	H 7	GOOD! 3PTR by DAVISON, BRAD
16:07		38-29	H 9	GOOD! JUMPER by REUVERS, NATE [PNT]
15:33		40-29	H 11	GOOD! DUNK by FORD, ALEEM
14:53		41-29	H 12	GOOD! FT by REUVERS, NATE
14:53		42-29	H 13	GOOD! FT by REUVERS, NATE
14:35	GOOD! LAYUP by WILLIAMS, TREVION	42-31	H 11	
13:40	GOOD! 3PTR by STEFANOVIC, SASHA	42-34	H 8	
13:09		45-34	H 11	GOOD! 3PTR by DAVISON, BRAD
12:50	GOOD! FT by STEFANOVIC, SASHA	45-35	H 10	
12:50	GOOD! FT by STEFANOVIC, SASHA	45-36	H 9	
12:25		48-36	H 12	GOOD! 3PTR by PRITZL, BREVIN
10:43	GOOD! LAYUP by BOUDREAU, EVAN [FB]	48-38	H 10	
10:16		51-38	H 13	GOOD! 3PTR by FORD, ALEEM
09:14	GOOD! JUMPER by WILLIAMS, TREVION [PNT]	51-40	H 11	
08:36	GOOD! 3PTR by THOMPSON, ISAIAH	51-43	H 8	
07:32	GOOD! LAYUP by EASTERN, NOJEL [PNT]	51-45	H 6	
07:17		54-45	H 9	GOOD! 3PTR by TRICE, D'MITRIK
06:36	GOOD! 3PTR by THOMPSON, ISAIAH [FB]	54-48	H 6	
06:20		55-48	H 7	GOOD! FT by REUVERS, NATE
05:38		57-48	H 9	GOOD! JUMPER by REUVERS, NATE
05:09	GOOD! DUNK by EASTERN, NOJEL	57-50	H 7	
04:45	GOOD! 3PTR by STEFANOVIC, SASHA	57-53	H 4	
03:44		58-53	H 5	GOOD! FT by REUVERS, NATE
03:44		59-53	H 6	GOOD! FT by REUVERS, NATE
02:34	GOOD! LAYUP by EASTERN, NOJEL [FB/PNT]	59-55	H 4	
02:34	GOOD! FT by EASTERN, NOJEL [FB]	59-56	H 3	
02:03		60-56	H 4	GOOD! FT by PRITZL, BREVIN
02:03		61-56	H 5	GOOD! FT by PRITZL, BREVIN
01:41	GOOD! 3PTR by STEFANOVIC, SASHA	61-59	H 2	
00:28		62-59	H 3	GOOD! FT by DAVISON, BRAD
00:28		63-59	H 4	GOOD! FT by DAVISON, BRAD
00:24	GOOD! JUMPER by WILLIAMS, TREVION	63-61	H 2	
00:23		64-61	H 3	GOOD! FT by PRITZL, BREVIN
00:23		65-61	H 4	GOOD! FT by PRITZL, BREVIN
00:16	GOOD! LAYUP by HUNTER JR., ERIC	65-63	H 2	
00:16		66-63	H 3	GOOD! FT by DAVISON, BRAD
00:16		67-63	H 4	GOOD! FT by DAVISON, BRAD
00:09	GOOD! DUNK by WILLIAMS, TREVION [PNT]	67-65	H 2	
00:07		68-65	H 3	GOOD! FT by PRITZL, BREVIN
00:07		69-65	H 4	GOOD! FT by PRITZL, BREVIN

Purdue 65, Wisconsin 69

Official Substitutions Log
Purdue vs Wisconsin
Period 1
February 18, 2020 at Kohl Center (Ab Nicholas Court) - Madison



VISITORS: Purdue	Time	Score	HOME: Wisconsin
2 HUNTER JR., ERIC			0 TRICE, D'MITRIK
3 PROCTOR, JAHAAAD			11 POTTER, MICAH
12 BOUDREAUX, EVAN			34 DAVISON, BRAD
20 EASTERN, NOJEL			35 REUVERS, NATE
32 HAARMS, MATT			2 FORD, ALEEM
SUB OUT: 2 HUNTER JR., ERIC	17:21	-	
SUB IN: 11 THOMPSON, ISAIAH	17:21		
	17:21		SUB OUT: FORD, ALEEM
	17:21		SUB IN: PRITZL, BREVIN
	16:24	0-3	SUB OUT: REUVERS, NATE
	16:24		SUB IN: WAHL, TYLER
SUB OUT: 20 EASTERN, NOJEL	16:24		
SUB OUT: 32 HAARMS, MATT	16:24		
SUB IN: 50 WILLIAMS, TREVION	16:24		
SUB IN: 55 STEFANOVIC, SASHA	16:24		
	14:48	2-5	SUB OUT: WAHL, TYLER
	14:48		SUB OUT: POTTER, MICAH
	14:48		SUB OUT: DAVISON, BRAD
	14:48		SUB IN: FORD, ALEEM
	14:48		SUB IN: ANDERSON, TREVOR
	14:48		SUB IN: REUVERS, NATE
	13:28	4-10	SUB OUT: TRICE, D'MITRIK
	13:28		SUB IN: DAVISON, BRAD
SUB OUT: 3 PROCTOR, JAHAAAD	13:28		
SUB OUT: 12 BOUDREAUX, EVAN	13:28		
SUB IN: 1 WHEELER, AARON	13:28		
SUB IN: 20 EASTERN, NOJEL	13:28		
SUB OUT: 50 WILLIAMS, TREVION	12:52	4-10	
SUB IN: 32 HAARMS, MATT	12:52		
	11:25	7-13	SUB OUT: ANDERSON, TREVOR
	11:25		SUB OUT: REUVERS, NATE
	11:25		SUB IN: TRICE, D'MITRIK
	11:25		SUB IN: POTTER, MICAH
SUB OUT: 11 THOMPSON, ISAIAH	11:25		
SUB IN: 2 HUNTER JR., ERIC	11:25		
	10:30	7-13	SUB OUT: FORD, ALEEM
	10:30		SUB IN: WAHL, TYLER
SUB OUT: 1 WHEELER, AARON	10:30		
SUB OUT: 32 HAARMS, MATT	10:30		
SUB OUT: 55 STEFANOVIC, SASHA	10:30		
SUB IN: 3 PROCTOR, JAHAAAD	10:30		
SUB IN: 12 BOUDREAUX, EVAN	10:30		
SUB IN: 50 WILLIAMS, TREVION	10:30		
	09:39	9-13	SUB OUT: WAHL, TYLER
	09:39		SUB OUT: POTTER, MICAH
	09:39		SUB IN: FORD, ALEEM
	09:39		SUB IN: REUVERS, NATE
SUB OUT: 20 EASTERN, NOJEL	08:47	12-13	
SUB IN: 11 THOMPSON, ISAIAH	08:47		
	06:49	12-16	SUB OUT: DAVISON, BRAD
	06:49		SUB IN: ANDERSON, TREVOR
SUB OUT: 2 HUNTER JR., ERIC	06:49		
SUB IN: 55 STEFANOVIC, SASHA	06:49		
SUB OUT: 50 WILLIAMS, TREVION	06:14	15-16	
SUB IN: 32 HAARMS, MATT	06:14		
	05:12	15-18	SUB OUT: TRICE, D'MITRIK
	05:12		SUB IN: DAVISON, BRAD
SUB OUT: 32 HAARMS, MATT	05:12		
SUB IN: 50 WILLIAMS, TREVION	05:12		
	05:12		SUB OUT: REUVERS, NATE
	05:12		SUB IN: POTTER, MICAH
SUB OUT: 11 THOMPSON, ISAIAH	04:36	15-20	
SUB OUT: 12 BOUDREAUX, EVAN	04:36		
SUB IN: 1 WHEELER, AARON	04:36		
SUB IN: 20 EASTERN, NOJEL	04:36		
SUB OUT: 55 STEFANOVIC, SASHA	04:16	15-20	
SUB IN: 2 HUNTER JR., ERIC	04:16		
	02:38	22-22	SUB OUT: POTTER, MICAH
	02:38		SUB OUT: ANDERSON, TREVOR
	02:38		SUB IN: TRICE, D'MITRIK
	02:38		SUB IN: REUVERS, NATE
SUB OUT: 3 PROCTOR, JAHAAAD	02:38		
SUB IN: 55 STEFANOVIC, SASHA	02:38		
SUB OUT: 2 HUNTER JR., ERIC	01:48	23-22	
SUB IN: 11 THOMPSON, ISAIAH	01:48		

Official Substitutions Log
Purdue vs Wisconsin
Period 2
February 18, 2020 at Kohl Center (Ab Nicholas Court) - Madison



VISITORS: Purdue	Time	Score	HOME: Wisconsin
2 HUNTER JR., ERIC			0 TRICE, D'MITRIK
3 PROCTOR, JAHAAAD			11 POTTER, MICAH
12 BOUDREAUX, EVAN			34 DAVISON, BRAD
20 EASTERN, NOJEL			35 REUVERS, NATE
32 HAARMS, MATT			2 FORD, ALEEM
	20:00	-	SUB OUT: PRITZL, BREVIN
	20:00		SUB IN: POTTER, MICAH
SUB OUT: 1 WHEELER, AARON	20:00		
SUB OUT: 11 THOMPSON, ISAIAH	20:00		
SUB OUT: 50 WILLIAMS, TREVION	20:00		
SUB OUT: 55 STEFANOVIC, SASHA	20:00		
SUB IN: 2 HUNTER JR., ERIC	20:00		
SUB IN: 3 PROCTOR, JAHAAAD	20:00		
SUB IN: 12 BOUDREAUX, EVAN	20:00		
SUB IN: 32 HAARMS, MATT	20:00		
	16:12	29-36	SUB OUT: POTTER, MICAH
	16:12		SUB IN: PRITZL, BREVIN
SUB OUT: 12 BOUDREAUX, EVAN	16:12		
SUB OUT: 20 EASTERN, NOJEL	16:12		
SUB OUT: 32 HAARMS, MATT	16:12		
SUB IN: 1 WHEELER, AARON	16:12		
SUB IN: 50 WILLIAMS, TREVION	16:12		
SUB IN: 55 STEFANOVIC, SASHA	16:12		
	14:53	29-41	SUB OUT: TRICE, D'MITRIK
	14:53		SUB OUT: FORD, ALEEM
	14:53		SUB IN: WAHL, TYLER
	14:53		SUB IN: ANDERSON, TREVOR
SUB OUT: 2 HUNTER JR., ERIC	14:14	31-42	
SUB IN: 20 EASTERN, NOJEL	14:14		
	12:50	35-45	SUB OUT: REUVERS, NATE
	12:50		SUB IN: POTTER, MICAH
	12:50		SUB OUT: DAVISON, BRAD
	12:50		SUB IN: TRICE, D'MITRIK
	11:27	36-48	SUB OUT: WAHL, TYLER
	11:27		SUB IN: FORD, ALEEM
SUB OUT: 1 WHEELER, AARON	11:27		
SUB IN: 12 BOUDREAUX, EVAN	11:27		
	09:57	38-51	SUB OUT: POTTER, MICAH
	09:57		SUB OUT: ANDERSON, TREVOR
	09:57		SUB IN: DAVISON, BRAD
	09:57		SUB IN: REUVERS, NATE
SUB OUT: 3 PROCTOR, JAHAAAD	09:57		
SUB IN: 11 THOMPSON, ISAIAH	09:57		
SUB OUT: 50 WILLIAMS, TREVION	08:15	43-51	
SUB IN: 32 HAARMS, MATT	08:15		
SUB OUT: 32 HAARMS, MATT	06:20	48-54	
SUB IN: 50 WILLIAMS, TREVION	06:20		
SUB OUT: 11 THOMPSON, ISAIAH	04:29	53-57	
SUB OUT: 12 BOUDREAUX, EVAN	04:29		
SUB IN: 1 WHEELER, AARON	04:29		
SUB IN: 2 HUNTER JR., ERIC	04:29		
SUB OUT: 2 HUNTER JR., ERIC	03:43	53-59	
SUB IN: 11 THOMPSON, ISAIAH	03:43		
SUB OUT: 11 THOMPSON, ISAIAH	02:34	55-59	
SUB IN: 2 HUNTER JR., ERIC	02:34		
SUB OUT: 2 HUNTER JR., ERIC	02:03	56-60	
SUB IN: 11 THOMPSON, ISAIAH	02:03		
SUB OUT: 11 THOMPSON, ISAIAH	01:00	59-61	
SUB IN: 2 HUNTER JR., ERIC	01:00		
SUB OUT: 2 HUNTER JR., ERIC	00:42	59-61	
SUB IN: 11 THOMPSON, ISAIAH	00:42		
SUB OUT: 20 EASTERN, NOJEL	00:23	61-64	
SUB IN: 2 HUNTER JR., ERIC	00:23		

Purdue 65, Wisconsin 69

Official Shot Chart
Purdue vs Wisconsin
 PERIOD 1 Shots
 February 18, 2020 at Kohl Center (Ab Nicholas Court) - Madison

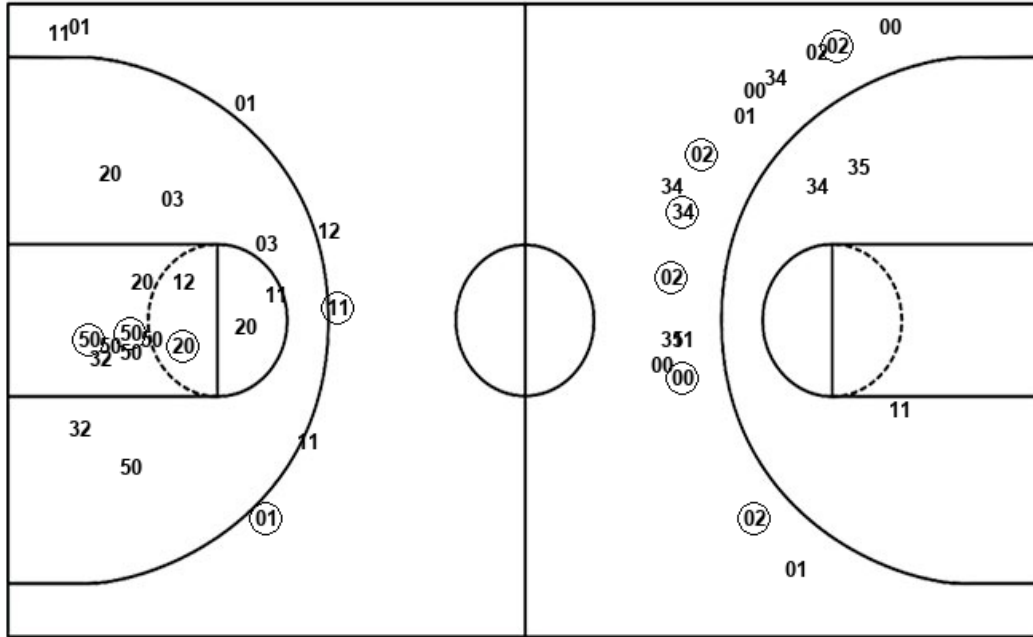


Wisconsin

Purdue

Layups
 11 (05) 35 02 (00)

Dunks
 (01) (02)



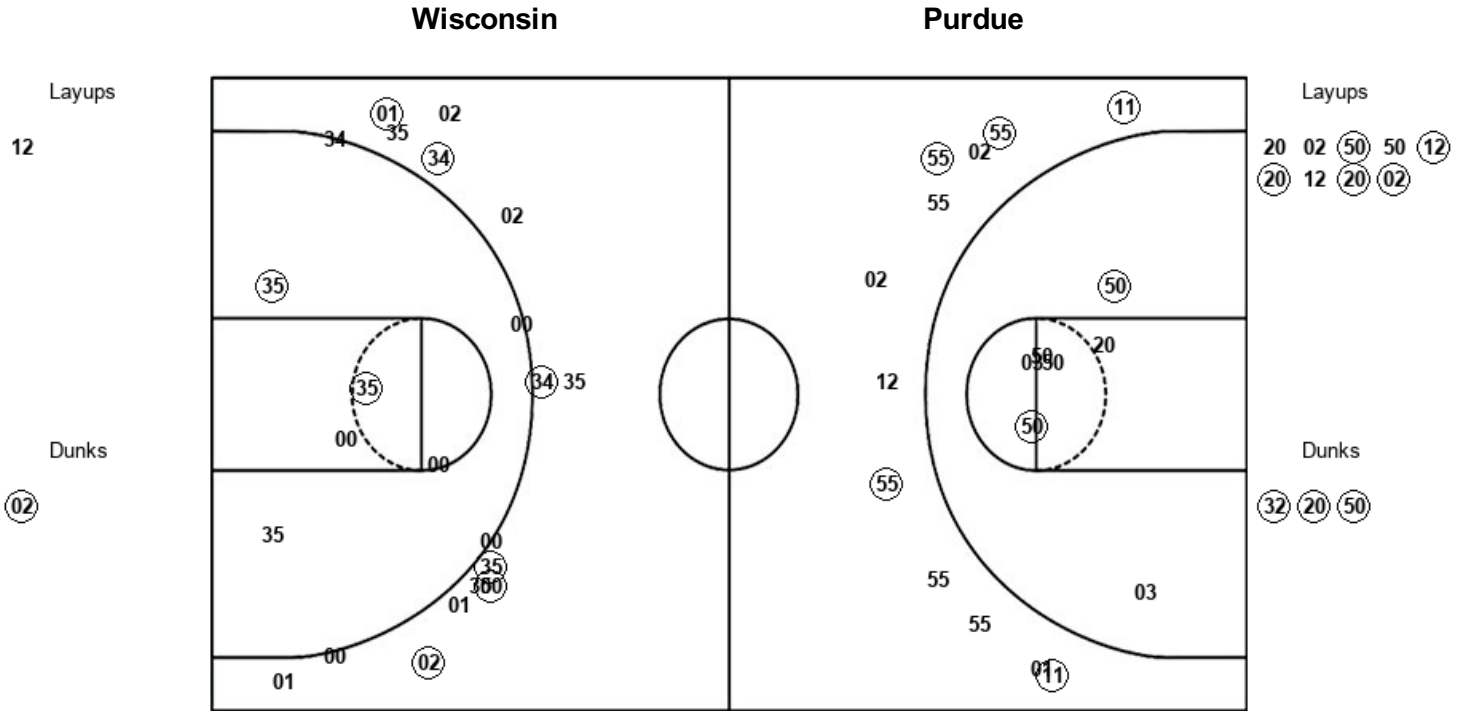
Layups
 (50) 55 (20) (20) 20
 11 50

Dunks
 (50) (01)

WIS : Period 1	Made	Att	Pct
Layups	2	5	40.0
Dunks	2	2	100.0
2PT Field Goals	4	10	40.0
3PT Field Goals	6	16	37.5
Total Field Goals	10	26	38.5

PUR : Period 1	Made	Att	Pct
Layups	3	7	42.9
Dunks	2	2	100.0
2PT Field Goals	8	25	32.0
3PT Field Goals	2	7	28.6
Total Field Goals	10	32	31.3

Official Shot Chart
Purdue vs Wisconsin
 PERIOD 2 Shots
 February 18, 2020 at Kohl Center (Ab Nicholas Court) - Madison



WIS : Period 2	Made	Att	Pct
Layups	0	1	00.0
Dunks	1	1	100.0
2PT Field Goals	3	9	33.3
3PT Field Goals	6	15	40.0
Total Field Goals	9	24	37.5

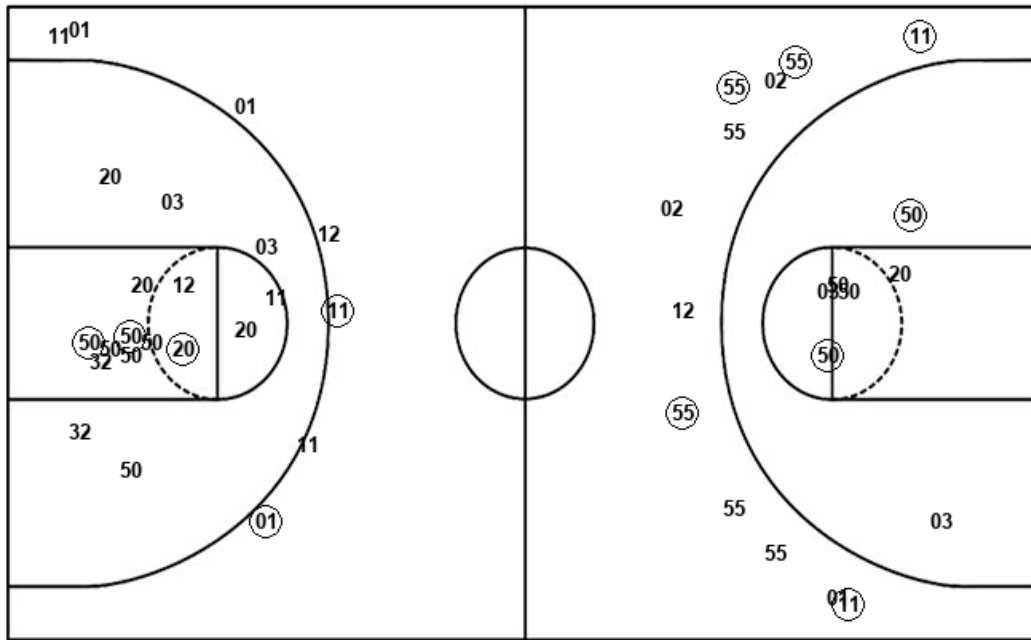
PUR : Period 2	Made	Att	Pct
Layups	5	9	55.6
Dunks	3	3	100.0
2PT Field Goals	10	19	52.6
3PT Field Goals	5	12	41.7
Total Field Goals	15	31	48.4

Official Shot Chart
Purdue vs Wisconsin
Purdue Team Shots
February 18, 2020 at Kohl Center (Ab Nicholas Court) - Madison



Layups

Dunks



Layups

Dunks

PUR : Period 1	Made	Att	Pct
Layups	3	7	42.9
Dunks	2	2	100.0
2PT Field Goals	8	25	32.0
3PT Field Goals	2	7	28.6
Total Field Goals	10	32	31.3

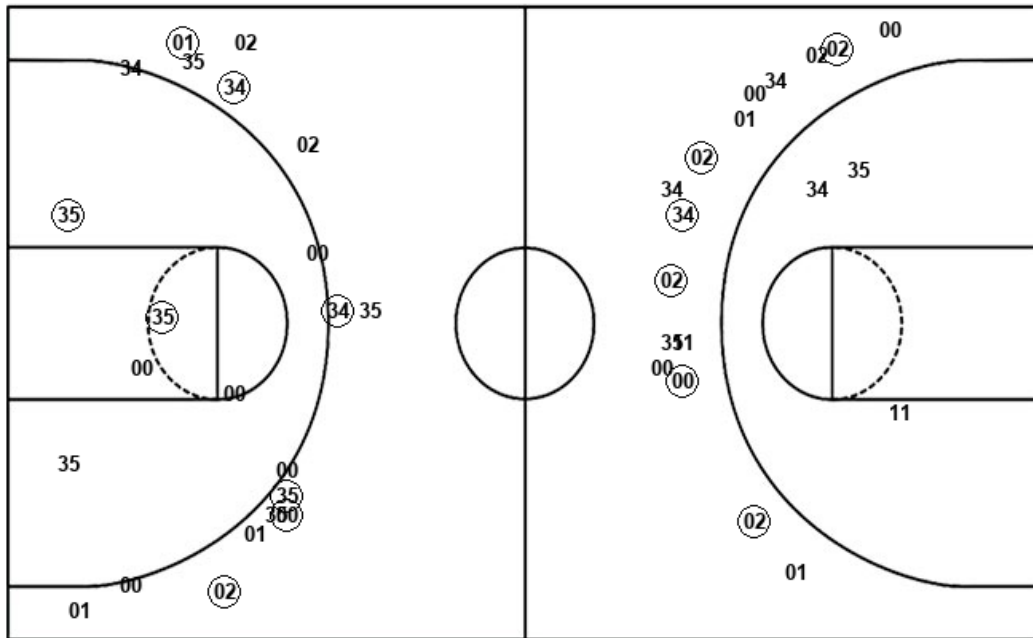
PUR : Period 2	Made	Att	Pct
Layups	5	9	55.6
Dunks	3	3	100.0
2PT Field Goals	10	19	52.6
3PT Field Goals	5	12	41.7
Total Field Goals	15	31	48.4

Official Shot Chart
Purdue vs Wisconsin
 Wisconsin Team Shots
 February 18, 2020 at Kohl Center (Ab Nicholas Court) - Madison



Layups

Dunks



Layups

Dunks

WIS : Period 1	Made	Att	Pct
Layups	2	5	40.0
Dunks	2	2	100.0
2PT Field Goals	4	10	40.0
3PT Field Goals	6	16	37.5
Total Field Goals	10	26	38.5

WIS : Period 2	Made	Att	Pct
Layups	0	1	00.0
Dunks	1	1	100.0
2PT Field Goals	3	9	33.3
3PT Field Goals	6	15	40.0
Total Field Goals	9	24	37.5