

## CURRENT SCORE



**Purdue**

**99**



**Tennessee**

**94**

March 28, 2019 • KFC Yum! Center (Denny Crum Court) - Louisville, KY

## STATISTICS

**Official Box Score**  
**Purdue vs Tennessee**  
**Game Totals at 00:00 (3rd Period)**  
**March 28, 2019 at KFC Yum! Center (Denny Crum Court) - Louisville, KY**



**Purdue 99**

No.	Player	S	Pts	FG	3FG	FT	OR	DR	TR	PF	A	TO	Blk	Stl	Min	+/-
03	EDWARDS,CARSEN	G	29	8-22	5-14	8-14	0	4	4	1	3	1	0	0	45	5
14	CLINE,RYAN	G	27	10-13	7-10	0-0	0	2	2	5	4	0	0	1	29	1
20	EASTERN,NOJEL	G	11	5-8	0-0	1-3	1	4	5	4	3	1	0	2	28	7
24	EIFERT,GRADY	F	7	1-3	1-2	4-6	3	6	9	4	1	1	0	0	32	4
32	HAARMS,MATT	F	11	5-8	0-1	1-5	1	5	6	2	2	1	3	0	36	0
01	WHEELER,AARON	F	8	3-5	2-3	0-0	0	4	4	2	0	1	1	0	13	1
02	HUNTER JR.,ERIC	G	2	0-1	0-1	2-4	0	3	3	2	3	1	1	0	20	-1
50	WILLIAMS,TREVION	F	4	2-3	0-0	0-1	4	2	6	2	0	0	0	0	9	5
55	STEFANOVIC,SASHA	G	0	0-0	0-0	0-0	0	2	2	1	0	2	0	1	13	3
TEAM							2	0	2	0		0				
<b>TOTALS</b>			<b>99</b>	<b>34-63</b>	<b>15-31</b>	<b>16-33</b>	<b>11</b>	<b>32</b>	<b>43</b>	<b>23</b>	<b>16</b>	<b>8</b>	<b>5</b>	<b>4</b>	<b>225</b>	

*Shooting By Period*

Period	FG	FG%	3FG	3FG%	FT	FT%
1st Half	16-29	55%	7-16	44%	1-5	20%
2nd Half	15-29	52%	8-15	53%	4-10	40%
3rd Half	3-5	60%	0-0	0%	11-18	61%
<b>Game</b>	<b>34-63</b>	<b>54.0%</b>	<b>15-31</b>	<b>48.4%</b>	<b>16-33</b>	<b>48.5%</b>

*Deadball Rebounds: 7,0*  
*Last FG: 3rd-01:38*  
*Biggest Run: 10-0*  
*Largest lead: By 18 at 2-16:19*  
*Technical Fouls: None.*

**Tennessee 94**

No.	Player	S	Pts	FG	3FG	FT	OR	DR	TR	PF	A	TO	Blk	Stl	Min	+/-
00	BONE,JORDAN	G	10	4-10	2-4	0-0	0	4	4	0	4	1	0	1	39	-3
01	TURNER,LAMONTE	G	15	6-10	3-6	0-1	0	2	2	4	3	0	0	1	41	-6
02	WILLIAMS,GRANT	F	21	9-16	0-2	3-5	3	4	7	5	4	1	2	0	29	-7
05	SCHOFIELD,ADMIRAL	G	21	7-15	3-6	4-8	2	7	9	3	2	3	0	1	42	-6
11	ALEXANDER,KYLE	F	9	3-7	0-0	3-4	6	2	8	5	0	1	3	1	25	2
10	FULKERSON,JOHN	F	2	1-2	0-0	0-1	0	1	1	3	0	0	0	0	9	-6
13	JOHNSON,JALEN	G	0	0-0	0-0	0-0	0	0	0	1	0	0	0	0	1	0
23	BOWDEN,JORDAN	G	16	4-8	4-6	4-9	0	6	6	5	3	1	0	1	36	-1
35	PONS,YVES	G	0	0-0	0-0	0-0	0	0	0	0	0	0	0	0	2	2
TEAM							0	1	1	0		0				
<b>TOTALS</b>			<b>94</b>	<b>34-68</b>	<b>12-24</b>	<b>14-28</b>	<b>11</b>	<b>27</b>	<b>38</b>	<b>26</b>	<b>16</b>	<b>7</b>	<b>5</b>	<b>5</b>	<b>225</b>	

*Shooting By Period*

Period	FG	FG%	3FG	3FG%	FT	FT%
1st Half	10-28	36%	4-9	44%	4-13	31%
2nd Half	20-30	67%	7-10	70%	7-9	78%
3rd Half	4-10	40%	1-5	20%	3-6	50%
<b>Game</b>	<b>34-68</b>	<b>50.0%</b>	<b>12-24</b>	<b>50.0%</b>	<b>14-28</b>	<b>50.0%</b>

*Deadball Rebounds: 5,1*  
*Last FG: 3rd-00:00*  
*Biggest Run: 14-0*  
*Largest lead: By 3 at 2-01:07*  
*Technical Fouls: None.*

Game Notes:

Officials: Jeff Anderson,Joe Lindsay,DJ Carstensen  
Attendance: Not Counted Yet

Start Time: 11:29 PM

Neutral Court;

Score	1st	2nd	3rd	TOT
PUR	40	42	17	<b>99</b>
TEN	28	54	12	<b>94</b>

PUR led for 36:04. TEN led for 4:57.  
Game was tied for 3:59.  
Times tied: 7      Lead Changes: 5

Points from	PUR	TEN
In the Paint	32	36
Off Turns	9	13
2nd Chance	10	7
Fast Break	6	2
Bench	14	18

**Official Box Score**  
**Purdue vs Tennessee**  
**First Half Statistics Only**  
**March 28, 2019 at KFC Yum! Center (Denny Crum Court) - Louisville, KY**



**Purdue 40**

No.	Player	S	Pts	FG	3FG	FT	OR	DR	TR	PF	A	TO	Blk	Stl	Min	+/-
03	EDWARDS,CARSEN	G	15	5-12	4-9	1-3	0	2	2	0	2	0	0	0	20	12
14	CLINE,RYAN	G	5	2-4	1-3	0-0	0	1	1	2	2	0	0	1	13	3
20	EASTERN,NOJEL	G	4	2-3	0-0	0-0	0	2	2	2	2	1	0	1	9	9
24	EIFERT,GRADY	F	3	1-1	1-1	0-0	1	1	2	2	0	0	0	0	11	6
32	HAARMS,MATT	F	4	2-3	0-1	0-2	0	3	3	1	0	1	1	0	13	8
01	WHEELER,AARON	F	5	2-3	1-1	0-0	0	3	3	2	0	0	1	0	9	6
02	HUNTER JR.,ERIC	G	0	0-1	0-1	0-0	0	1	1	1	2	1	1	0	11	3
50	WILLIAMS,TREVION	F	4	2-2	0-0	0-0	3	2	5	2	0	0	0	0	7	4
55	STEFANOVIC,SASHA	G	0	0-0	0-0	0-0	0	2	2	0	0	0	0	0	7	9
TEAM							0	0	0	0		0				
<b>TOTALS</b>			<b>40</b>	<b>16-29</b>	<b>7-16</b>	<b>1-5</b>	<b>4</b>	<b>17</b>	<b>21</b>	<b>12</b>	<b>8</b>	<b>3</b>	<b>3</b>	<b>2</b>	<b>100</b>	

*Shooting By Period*

Period	FG	FG%	3FG	3FG%	FT	FT%
1st Half	16-29	55%	7-16	44%	1-5	20%
Game	34-63	54.0%	15-31	48.4%	16-33	48.5%

*Deadball Rebounds: 7,0*

*Last FG Half: PUR 2nd-00:37*

**Tennessee 28**

No.	Player	S	Pts	FG	3FG	FT	OR	DR	TR	PF	A	TO	Blk	Stl	Min	+/-
00	BONE,JORDAN	G	5	2-5	1-2	0-0	0	1	1	0	1	0	0	1	18	-10
01	TURNER,LAMONTE	G	2	1-2	0-1	0-0	0	1	1	1	1	0	0	0	17	-11
02	WILLIAMS,GRANT	F	8	3-7	0-1	2-3	1	3	4	2	1	0	1	0	15	-12
05	SCHOFIELD,ADMIRAL	G	1	0-4	0-1	1-4	2	2	4	1	0	3	0	0	17	-12
11	ALEXANDER,KYLE	F	2	1-3	0-0	0-0	3	0	3	1	0	1	1	0	10	-4
10	FULKERSON,JOHN	F	0	0-1	0-0	0-0	0	0	0	1	0	0	0	0	6	-5
13	JOHNSON,JALEN	G	0	0-0	0-0	0-0	0	0	0	0	0	0	0	0	0	0
23	BOWDEN,JORDAN	G	10	3-6	3-4	1-6	0	4	4	1	1	0	0	0	14	-8
35	PONS,YVES	G	0	0-0	0-0	0-0	0	0	0	0	0	0	0	0	2	2
TEAM							0	0	0	0		0				
<b>TOTALS</b>			<b>28</b>	<b>10-28</b>	<b>4-9</b>	<b>4-13</b>	<b>6</b>	<b>11</b>	<b>17</b>	<b>7</b>	<b>4</b>	<b>4</b>	<b>2</b>	<b>1</b>	<b>100</b>	

*Shooting By Period*

Period	FG	FG%	3FG	3FG%	FT	FT%
1st Half	10-28	36%	4-9	44%	4-13	31%
Game	34-68	50.0%	12-24	50.0%	14-28	50.0%

*Deadball Rebounds: 5,1*

*Last FG Half: TEN 2nd-00:08*

Game Notes:

Officials: **Jeff Anderson, Joe Lindsay, DJ Carstensen**  
Attendance: *Not Counted Yet*

Start Time: **11:29 PM**  
Neutral Court;

Score	1st	2nd	3rd	TOT
PUR	40	42	17	<b>99</b>
TEN	28	54	12	<b>94</b>

Points from (This Period)	PUR	TEN
In the Paint	16	8
Off Turns	7	0
2nd Chance	5	0
Fast Break	4	0
Bench	9	10

**Official Play-By-Play  
Purdue vs Tennessee  
First Half**

**March 28, 2019 at KFC Yum! Center (Denny Crum Court) - Louisville, KY**



**Period 1**

**Starters:**

**Purdue:** 3 EDWARDS, CARSEN (G); 14 CLINE, RYAN (G); 20 EASTERN, NOJEL (G); 24 EIFERT, GRADY (F); 32 HAARMS, MATT (F);

**Tennessee:** 0 BONE, JORDAN (G); 1 TURNER, LAMONTE (G); 2 WILLIAMS, GRANT (F); 5 SCHOFIELD, ADMIRAL (G); 11 ALEXANDER, KYLE (F);

Time	VISITORS: Purdue	Score	Margin	HOME: Tennessee
19:45		3-0	H 3	GOOD! 3PTR by BONE, JORDAN
19:45				ASSIST by TURNER, LAMONTE
19:25	GOOD! JUMPER by HAARMS, MATT [PNT]	3-2	H 1	
19:25	ASSIST by EASTERN, NOJEL			
19:19				MISSED LAYUP by ALEXANDER, KYLE
19:19	BLOCK by HAARMS, MATT			
19:14	REBOUND (DEF) by EASTERN, NOJEL			
18:54	TURNOVER (TRAVEL) by HAARMS, MATT			
18:39				TURNOVER (BADPASS) by SCHOFIELD, ADMIRAL
18:39	STEAL by EASTERN, NOJEL			
18:34	GOOD! DUNK by EASTERN, NOJEL [FB]	3-4	V 1	
18:12				MISSED JUMPER by SCHOFIELD, ADMIRAL
18:07				REBOUND (OFF) by ALEXANDER, KYLE
17:57				MISSED 3PTR by WILLIAMS, GRANT
17:54	REBOUND (DEF) by HAARMS, MATT			
17:42	GOOD! LAYUP by EASTERN, NOJEL	3-6	V 3	
17:24		5-6	V 1	GOOD! JUMPER by BONE, JORDAN
17:05	GOOD! 3PTR by CLINE, RYAN	5-9	V 4	
17:05	ASSIST by EASTERN, NOJEL			
16:55				MISSED JUMPER by WILLIAMS, GRANT
16:51	REBOUND (DEF) by EIFERT, GRADY			
16:44	MISSED LAYUP by EDWARDS, CARSEN			
16:44				BLOCK by WILLIAMS, GRANT
16:40				REBOUND (DEF) by WILLIAMS, GRANT
16:17		7-9	V 2	GOOD! JUMPER by WILLIAMS, GRANT [PNT]
16:15	FOUL (PERSONAL) by EASTERN, NOJEL			
16:15				SUB OUT: SCHOFIELD, ADMIRAL
16:15				SUB IN: FULKERSON, JOHN
16:15				SUB OUT: ALEXANDER, KYLE
16:15				SUB IN: BOWDEN, JORDAN
16:15	SUB OUT: EASTERN, NOJEL			
16:15	SUB IN: HUNTER JR., ERIC			
15:59				MISSED 3PTR by BONE, JORDAN
15:57	REBOUND (DEF) by HAARMS, MATT			
15:57				FOUL (PERSONAL) by FULKERSON, JOHN
15:57	SUB OUT: HAARMS, MATT			
15:57	SUB IN: WILLIAMS, TREVION			
15:57				
15:38	MISSED 3PTR by EDWARDS, CARSEN			
15:35	REBOUND (OFF) by WILLIAMS, TREVION			
15:31	MISSED 3PTR by HUNTER JR., ERIC			
15:28	REBOUND (OFF) by WILLIAMS, TREVION			
15:28				SUB OUT: BONE, JORDAN
15:28				SUB IN: SCHOFIELD, ADMIRAL
15:24	GOOD! JUMPER by WILLIAMS, TREVION [PNT]	7-11	V 4	
14:52				TURNOVER (LOSTBALL) by SCHOFIELD, ADMIRAL
14:52	STEAL by CLINE, RYAN			
14:42	MISSED 3PTR by CLINE, RYAN			
14:39	REBOUND (OFF) by WILLIAMS, TREVION			
14:37	GOOD! JUMPER by WILLIAMS, TREVION [PNT]	7-13	V 6	
14:27		10-13	V 3	GOOD! 3PTR by BOWDEN, JORDAN
14:11	MISSED 3PTR by EDWARDS, CARSEN			
14:08				REBOUND (DEF) by WILLIAMS, GRANT
13:46				MISSED JUMPER by FULKERSON, JOHN
13:44				REBOUND (OFF) by WILLIAMS, GRANT
13:44	FOUL (PERSONAL) by EIFERT, GRADY			
13:44				SUB OUT: FULKERSON, JOHN
13:44				SUB IN: ALEXANDER, KYLE
13:44				SUB OUT: WILLIAMS, GRANT
13:44				SUB IN: BONE, JORDAN
13:44	SUB OUT: EIFERT, GRADY			
13:44	SUB IN: WHEELER, AARON			
13:44	SUB OUT: WILLIAMS, TREVION			
13:44	SUB IN: HAARMS, MATT			
13:44	SUB OUT: HUNTER JR., ERIC			
13:44	SUB IN: EASTERN, NOJEL			
13:42		13-13	T	GOOD! 3PTR by BOWDEN, JORDAN
13:42				ASSIST by BONE, JORDAN
13:28				FOUL (PERSONAL) by BOWDEN, JORDAN
13:28	SUB OUT: CLINE, RYAN			

Time	VISITORS: Purdue	Score	Margin	HOME: Tennessee
13:28	SUB IN: STEFANOVIC,SASHA			
13:19				FOUL (PERSONAL) by ALEXANDER,KYLE
13:19	MISSED FT by HAARMS,MATT			
13:19	REBOUND (OFF) by TEAM			
13:19	MISSED FT by HAARMS,MATT			
13:16				REBOUND (DEF) by TURNER,LAMONTE
13:05				MISSED 3PTR by SCHOFIELD,ADMIRAL
13:03	REBOUND (DEF) by EDWARDS,CARSEN			
12:47	GOOD! LAYUP by EDWARDS,CARSEN	13-15	V 2	
12:34				MISSED LAYUP by BONE,JORDAN
12:34	BLOCK by WHEELER,AARON			
12:30	REBOUND (DEF) by EASTERN,NOJEL			
12:23	GOOD! 3PTR by EDWARDS,CARSEN	13-18	V 5	
11:56				TURNOVER (TRAVEL) by ALEXANDER,KYLE
11:56				SUB OUT: ALEXANDER,KYLE
11:56				SUB IN: WILLIAMS,GRANT
11:39	GOOD! 3PTR by WHEELER,AARON	13-21	V 8	
11:39	ASSIST by EDWARDS,CARSEN			
11:20				MISSED JUMPER by SCHOFIELD,ADMIRAL
11:15	REBOUND (DEF) by WHEELER,AARON			
11:08	TURNOVER (TRAVEL) by EASTERN,NOJEL			
11:08	SUB OUT: HAARMS,MATT			
11:08	SUB IN: WILLIAMS,TREVION			
10:59				MISSED 3PTR by TURNER,LAMONTE
10:56	REBOUND (DEF) by STEFANOVIC,SASHA			
10:38	MISSED JUMPER by WHEELER,AARON			
10:31				REBOUND (DEF) by WILLIAMS,GRANT
10:12				MISSED JUMPER by WILLIAMS,GRANT
10:09	REBOUND (DEF) by WILLIAMS,TREVION			
10:02	MISSED 3PTR by EDWARDS,CARSEN			
09:59				REBOUND (DEF) by BOWDEN,JORDAN
09:48				MISSED JUMPER by BOWDEN,JORDAN
09:44	REBOUND (DEF) by WHEELER,AARON			
09:28	MISSED JUMPER by EASTERN,NOJEL			
09:26				REBOUND (DEF) by SCHOFIELD,ADMIRAL
09:12				MISSED DUNK by SCHOFIELD,ADMIRAL
09:08	REBOUND (DEF) by WILLIAMS,TREVION			
09:06	GOOD! DUNK by WHEELER,AARON [FB]	13-23	V 10	
09:06	ASSIST by EDWARDS,CARSEN			
08:42	FOUL (PERSONAL) by EASTERN,NOJEL			
08:42				SUB OUT: BOWDEN,JORDAN
08:42				SUB IN: PONS,YVES
08:42	SUB OUT: WHEELER,AARON			
08:42	SUB IN: HUNTER JR.,ERIC			
08:42	SUB OUT: EASTERN,NOJEL			
08:42	SUB IN: CLINE,RYAN			
08:42	SUB OUT: STEFANOVIC,SASHA			
08:42	SUB IN: EIFERT,GRADY			
08:34		15-23	V 8	GOOD! JUMPER by WILLIAMS,GRANT [PNT]
08:34	FOUL (PERSONAL) by CLINE,RYAN			
08:34				SUB OUT: SCHOFIELD,ADMIRAL
08:34				SUB IN: FULKERSON,JOHN
08:34				MISSED FT by WILLIAMS,GRANT
08:33	REBOUND (DEF) by EDWARDS,CARSEN			
08:09	GOOD! 3PTR by EDWARDS,CARSEN	15-26	V 11	
08:09	ASSIST by HUNTER JR.,ERIC			
07:42	FOUL (PERSONAL) by WILLIAMS,TREVION			
07:42				SUB OUT: TURNER,LAMONTE
07:42				SUB IN: BOWDEN,JORDAN
07:28	FOUL (PERSONAL) by WILLIAMS,TREVION			
07:28	SUB OUT: WILLIAMS,TREVION			
07:28	SUB IN: HAARMS,MATT			
07:16		18-26	V 8	GOOD! 3PTR by BOWDEN,JORDAN
07:16				ASSIST by WILLIAMS,GRANT
06:53	TURNOVER (LOSTBALL) by HUNTER JR.,ERIC			
06:53				STEAL by BONE,JORDAN
06:49				MISSED LAYUP by BONE,JORDAN
06:49	BLOCK by HUNTER JR.,ERIC			
06:46	REBOUND (DEF) by HUNTER JR.,ERIC			
06:42	MISSED 3PTR by CLINE,RYAN			
06:38	REBOUND (OFF) by EIFERT,GRADY			
06:38				SUB OUT: PONS,YVES
06:38				SUB IN: SCHOFIELD,ADMIRAL
06:35				FOUL (PERSONAL) by SCHOFIELD,ADMIRAL
06:26				FOUL (PERSONAL) by WILLIAMS,GRANT
06:26	MISSED FT by EDWARDS,CARSEN			
06:26	REBOUND (OFF) by TEAM			
06:26	GOOD! FT by EDWARDS,CARSEN	18-27	V 9	

Time	VISITORS: Purdue	Score	Margin	HOME: Tennessee
06:16				MISSED JUMPER by BOWDEN,JORDAN
06:13	REBOUND (DEF) by CLINE,RYAN			
05:59	GOOD! DUNK by HAARMS,MATT	18-29	V 11	
05:59	ASSIST by CLINE,RYAN			
05:31		20-29	V 9	GOOD! JUMPER by WILLIAMS,GRANT [PNT]
05:07	GOOD! 3PTR by EIFERT,GRADY	20-32	V 12	
05:07	ASSIST by CLINE,RYAN			
04:42	FOUL (PERSONAL) by HAARMS,MATT			
04:42				SUB OUT: BONE,JORDAN
04:42				SUB IN: ALEXANDER,KYLE
04:42				SUB OUT: FULKERSON,JOHN
04:42				SUB IN: TURNER,LAMONTE
04:42		21-32	V 11	GOOD! FT by WILLIAMS,GRANT
04:42		22-32	V 10	GOOD! FT by WILLIAMS,GRANT
04:25	GOOD! 3PTR by EDWARDS,CARSEN	22-35	V 13	
04:13				MISSED JUMPER by WILLIAMS,GRANT
04:12				REBOUND (OFF) by ALEXANDER,KYLE
04:10				MISSED LAYUP by ALEXANDER,KYLE
04:10				REBOUND (OFF) by ALEXANDER,KYLE
04:09				MISSED 3PTR by BOWDEN,JORDAN
04:06				REBOUND (OFF) by SCHOFIELD,ADMIRAL
04:04	FOUL (PERSONAL) by EIFERT,GRADY			
04:04				MISSED FT by BOWDEN,JORDAN
04:04				REBOUND (OFF) by TEAM
04:04				SUB OUT: WILLIAMS,GRANT
04:04				SUB IN: BONE,JORDAN
04:04	SUB OUT: EIFERT,GRADY			
04:04	SUB IN: WHEELER,AARON			
04:04				MISSED FT by BOWDEN,JORDAN
04:03	REBOUND (DEF) by HAARMS,MATT			
03:47	MISSED 3PTR by EDWARDS,CARSEN			
03:44				REBOUND (DEF) by BONE,JORDAN
03:30		24-35	V 11	GOOD! DUNK by ALEXANDER,KYLE
03:30				ASSIST by BOWDEN,JORDAN
03:02	GOOD! JUMPER by CLINE,RYAN	24-37	V 13	
02:39	FOUL (PERSONAL) by CLINE,RYAN			
02:39				
02:39	SUB IN: STEFANOVIC,SASHA			
02:39	SUB OUT: CLINE,RYAN			
02:39	SUB IN: WILLIAMS,TREVION			
02:39	SUB OUT: HAARMS,MATT			
02:39				MISSED FT by BOWDEN,JORDAN
02:39				REBOUND (OFF) by TEAM
02:39		25-37	V 12	GOOD! FT by BOWDEN,JORDAN
02:39				SUB OUT: BOWDEN,JORDAN
02:39				SUB IN: WILLIAMS,GRANT
02:27	GOOD! 3PTR by EDWARDS,CARSEN	25-40	V 15	
02:27	ASSIST by HUNTER JR.,ERIC			
02:03		27-40	V 13	GOOD! LAYUP by TURNER,LAMONTE
01:46				FOUL (PERSONAL) by WILLIAMS,GRANT
01:46				SUB OUT: WILLIAMS,GRANT
01:46				SUB IN: BOWDEN,JORDAN
01:46	SUB OUT: WILLIAMS,TREVION			
01:46	SUB IN: HAARMS,MATT			
01:39	MISSED 3PTR by EDWARDS,CARSEN			
01:35				REBOUND (DEF) by BOWDEN,JORDAN
01:28				TURNOVER (OFFENSIVE GOALTENDING) by SCHOFIELD,ADMIRAL
01:10				FOUL (PERSONAL) by TURNER,LAMONTE
01:10	MISSED FT by EDWARDS,CARSEN			
01:10				REBOUND (DEF) by SCHOFIELD,ADMIRAL
01:10	FOUL (PERSONAL) by WHEELER,AARON			
01:10				MISSED FT by SCHOFIELD,ADMIRAL
01:10				REBOUND (OFF) by TEAM
01:10				MISSED FT by SCHOFIELD,ADMIRAL
01:07	REBOUND (DEF) by STEFANOVIC,SASHA			
00:45	MISSED 3PTR by HAARMS,MATT			
00:42				REBOUND (DEF) by BOWDEN,JORDAN
00:30	FOUL (PERSONAL) by WHEELER,AARON			
00:30		28-40	V 12	GOOD! FT by SCHOFIELD,ADMIRAL
00:30				MISSED FT by SCHOFIELD,ADMIRAL
00:28	REBOUND (DEF) by WHEELER,AARON			
00:04	MISSED LAYUP by EDWARDS,CARSEN			
00:04				BLOCK by ALEXANDER,KYLE
00:01				REBOUND (DEF) by BOWDEN,JORDAN
00:01	FOUL (PERSONAL) by HUNTER JR.,ERIC			
00:01				MISSED FT by BOWDEN,JORDAN
00:01				REBOUND (OFF) by TEAM
00:01				MISSED FT by BOWDEN,JORDAN
00:00				REBOUND (OFF) by SCHOFIELD,ADMIRAL

**Purdue 40, Tennessee 28**

<b>Points from (This Period)</b>	<b>PUR</b>	<b>TEN</b>
In the Paint	16	8
Off Turns	7	0
2nd Chance	5	0
Fast Break	4	0
Bench	9	10

**Official Box Score**  
**Purdue vs Tennessee**  
**Second Half Statistics Only**  
**March 28, 2019 at KFC Yum! Center (Denny Crum Court) - Louisville, KY**



**Purdue 42**

No.	Player	S	Pts	FG	3FG	FT	OR	DR	TR	PF	A	TO	Blk	Stl	Min	+/-
03	EDWARDS,CARSEN	G	8	2-9	1-5	3-5	0	1	1	1	1	1	0	0	20	-12
14	CLINE,RYAN	G	22	8-9	6-7	0-0	0	1	1	2	2	0	0	0	15	-6
20	EASTERN,NOJEL	G	4	2-4	0-0	0-1	0	0	0	1	1	0	0	1	15	-7
24	EIFERT,GRADY	F	1	0-1	0-1	1-2	2	2	4	1	0	1	0	0	16	-7
32	HAARMS,MATT	F	4	2-3	0-0	0-1	1	1	2	0	2	0	2	0	18	-13
01	WHEELER,AARON	F	3	1-2	1-2	0-0	0	1	1	0	0	1	0	0	4	-5
02	HUNTER JR.,ERIC	G	0	0-0	0-0	0-0	0	1	1	1	1	0	0	0	5	-5
50	WILLIAMS,TREVION	F	0	0-1	0-0	0-1	1	0	1	0	0	0	0	0	2	1
55	STEFANOVIC,SASHA	G	0	0-0	0-0	0-0	0	0	0	1	0	2	0	1	5	-6
<b>TEAM</b>							2	0	2	0	0					
<b>TOTALS</b>			<b>42</b>	<b>15-29</b>	<b>8-15</b>	<b>4-10</b>	<b>6</b>	<b>7</b>	<b>13</b>	<b>7</b>	<b>7</b>	<b>5</b>	<b>2</b>	<b>2</b>	<b>100</b>	

*Shooting By Period*

Period	FG	FG%	3FG	3FG%	FT	FT%
2nd Half	15-29	52%	8-15	53%	4-10	40%
Game	34-63	54.0%	15-31	48.4%	16-33	48.5%

*Deadball Rebounds: 7,0*  
*Last FG Half: PUR 3rd-01:38*

**Tennessee 54**

No.	Player	S	Pts	FG	3FG	FT	OR	DR	TR	PF	A	TO	Blk	Stl	Min	+/-
00	BONE,JORDAN	G	2	1-2	0-0	0-0	0	3	3	0	3	1	0	0	16	12
01	TURNER,LAMONTE	G	13	5-7	3-4	0-0	0	1	1	2	2	0	0	1	20	12
02	WILLIAMS,GRANT	F	10	5-7	0-0	0-0	2	1	3	2	3	1	1	0	11	9
05	SCHOFIELD,ADMIRAL	G	18	6-8	3-4	3-4	0	4	4	2	1	0	0	1	20	11
11	ALEXANDER,KYLE	F	5	2-4	0-0	1-2	3	0	3	2	0	0	2	1	13	7
10	FULKERSON,JOHN	F	0	0-0	0-0	0-0	0	0	0	0	0	0	0	0	2	-3
13	JOHNSON,JALEN	G	0	0-0	0-0	0-0	0	0	0	0	0	0	0	0	0	0
23	BOWDEN,JORDAN	G	6	1-2	1-2	3-3	0	2	2	2	2	1	0	1	18	12
35	PONS,YVES	G	0	0-0	0-0	0-0	0	0	0	0	0	0	0	0	0	0
<b>TEAM</b>							0	1	1	0	0					
<b>TOTALS</b>			<b>54</b>	<b>20-30</b>	<b>7-10</b>	<b>7-9</b>	<b>5</b>	<b>12</b>	<b>17</b>	<b>10</b>	<b>11</b>	<b>3</b>	<b>3</b>	<b>4</b>	<b>100</b>	

*Shooting By Period*

Period	FG	FG%	3FG	3FG%	FT	FT%
2nd Half	20-30	67%	7-10	70%	7-9	78%
Game	34-68	50.0%	12-24	50.0%	14-28	50.0%

*Deadball Rebounds: 5,1*  
*Last FG Half: TEN 3rd-00:00*

*Game Notes:*

Officials: Jeff Anderson, Joe Lindsay, DJ Carstensen  
Attendance: Not Counted Yet

Start Time: 11:29 PM  
Neutral Court;

Score	1st	2nd	3rd	TOT
PUR	40	42	17	<b>99</b>
TEN	28	54	12	<b>94</b>

Points from (This Period)	PUR	TEN
In the Paint	10	22
Off Turns	2	13
2nd Chance	3	7
Fast Break	2	2
Bench	3	6



**Official Play-By-Play  
Purdue vs Tennessee  
Second Half**

**March 28, 2019 at KFC Yum! Center (Denny Crum Court) - Louisville, KY**



**Period 2**

**Starters:**

**Purdue:** 3 EDWARDS, CARSEN (G); 14 CLINE, RYAN (G); 20 EASTERN, NOJEL (G); 24 EIFERT, GRADY (F); 32 HAARMS, MATT (F);

**Tennessee:** 0 BONE, JORDAN (G); 1 TURNER, LAMONTE (G); 2 WILLIAMS, GRANT (F); 5 SCHOFIELD, ADMIRAL (G); 11 ALEXANDER, KYLE (F);

Time	VISITORS: Purdue	Score	Margin	HOME: Tennessee
19:43	MISSED 3PTR by CLINE, RYAN			
19:40				REBOUND (DEF) by SCHOFIELD, ADMIRAL
19:24				TIMEOUT 30SEC
19:21		30-40	V 10	GOOD! JUMPER by SCHOFIELD, ADMIRAL
19:21				ASSIST by WILLIAMS, GRANT
19:01	GOOD! DUNK by HAARMS, MATT	30-42	V 12	
19:01	ASSIST by CLINE, RYAN			
18:35		32-42	V 10	GOOD! LAYUP by SCHOFIELD, ADMIRAL
18:35				ASSIST by BONE, JORDAN
18:13				FOUL (PERSONAL) by SCHOFIELD, ADMIRAL
18:10	GOOD! JUMPER by CLINE, RYAN	32-44	V 12	
18:05				TURNOVER (TRAVEL) by BONE, JORDAN
18:05				SUB OUT: BONE, JORDAN
18:05				SUB IN: BOWDEN, JORDAN
17:59	MISSED 3PTR by EIFERT, GRADY			
17:55	REBOUND (OFF) by HAARMS, MATT			
17:55	MISSED JUMPER by EASTERN, NOJEL			
17:55				REBOUND (DEF) by TEAM
17:38				TURNOVER (BADPASS) by WILLIAMS, GRANT
17:38	STEAL by EASTERN, NOJEL			
17:34	GOOD! LAYUP by EASTERN, NOJEL [FB]	32-46	V 14	
17:18				MISSED JUMPER by WILLIAMS, GRANT
17:15				REBOUND (OFF) by ALEXANDER, KYLE
17:13				MISSED JUMPER by ALEXANDER, KYLE
17:13	BLOCK by HAARMS, MATT			
17:12				REBOUND (OFF) by ALEXANDER, KYLE
17:11	FOUL (PERSONAL) by CLINE, RYAN			
17:11		33-46	V 13	GOOD! FT by ALEXANDER, KYLE
17:11				MISSED FT by ALEXANDER, KYLE
17:07	REBOUND (DEF) by EIFERT, GRADY			
16:45	GOOD! 3PTR by CLINE, RYAN	33-49	V 16	
16:45	ASSIST by HAARMS, MATT			
16:29				MISSED 3PTR by SCHOFIELD, ADMIRAL
16:25	REBOUND (DEF) by EDWARDS, CARSEN			
16:22				FOUL (PERSONAL) by TURNER, LAMONTE
16:22				SUB OUT: WILLIAMS, GRANT
16:22				SUB IN: BONE, JORDAN
16:19	GOOD! JUMPER by CLINE, RYAN	33-51	V 18	
15:58		36-51	V 15	GOOD! 3PTR by TURNER, LAMONTE
15:58				ASSIST by BONE, JORDAN
15:36	GOOD! JUMPER by HAARMS, MATT [PNT]	36-53	V 17	
15:36	ASSIST by CLINE, RYAN			
15:36				FOUL (PERSONAL) by ALEXANDER, KYLE
15:36				SUB OUT: ALEXANDER, KYLE
15:36				SUB IN: WILLIAMS, GRANT
15:36	MISSED FT by HAARMS, MATT			
15:35				REBOUND (DEF) by SCHOFIELD, ADMIRAL
15:35	FOUL (PERSONAL) by EASTERN, NOJEL			
15:35	SUB OUT: EASTERN, NOJEL			
15:35	SUB IN: HUNTER JR., ERIC			
15:24				MISSED LAYUP by WILLIAMS, GRANT
15:24	BLOCK by HAARMS, MATT			
15:21	REBOUND (DEF) by HAARMS, MATT			
15:14	TURNOVER (BADPASS) by EDWARDS, CARSEN			
15:14				STEAL by SCHOFIELD, ADMIRAL
15:09		39-53	V 14	GOOD! 3PTR by TURNER, LAMONTE
14:54				FOUL (PERSONAL) by BOWDEN, JORDAN
14:37	MISSED 3PTR by EDWARDS, CARSEN			
14:35				REBOUND (DEF) by BONE, JORDAN
14:27		41-53	V 12	GOOD! LAYUP by WILLIAMS, GRANT
14:27				ASSIST by BOWDEN, JORDAN
14:09				FOUL (PERSONAL) by BOWDEN, JORDAN
13:56	GOOD! 3PTR by CLINE, RYAN	41-56	V 15	
13:37		44-56	V 12	GOOD! 3PTR by BOWDEN, JORDAN
13:37				ASSIST by WILLIAMS, GRANT
13:37	FOUL (PERSONAL) by CLINE, RYAN			
13:37	SUB OUT: CLINE, RYAN			
13:37	SUB IN: STEFANOVIC, SASHA			
13:37		45-56	V 11	GOOD! FT by BOWDEN, JORDAN

Time	VISITORS: Purdue	Score	Margin	HOME: Tennessee
13:24	TURNOVER (BADPASS) by STEFANOVIC,SASHA			
13:24				STEAL by TURNER,LAMONTE
13:19		47-56	V 9	GOOD! LAYUP by TURNER,LAMONTE [FB]
13:19	TIMEOUT 30SEC			
12:55	GOOD! 3PTR by EDWARDS,CARSEN	47-59	V 12	
12:39		49-59	V 10	GOOD! JUMPER by BONE,JORDAN
12:25				FOUL (PERSONAL) by SCHOFIELD,ADMIRAL
12:25	GOOD! FT by EDWARDS,CARSEN	49-60	V 11	
12:25	SUB OUT: EIFERT,GRADY			
12:25	SUB IN: WHEELER,AARON			
12:25	SUB OUT: HAARMS,MATT			
12:25	SUB IN: WILLIAMS,TREVION			
12:25	MISSED FT by EDWARDS,CARSEN			
12:25	REBOUND (OFF) by WILLIAMS,TREVION			
12:25				FOUL (PERSONAL) by WILLIAMS,GRANT
12:25				SUB OUT: WILLIAMS,GRANT
12:25				SUB IN: FULKERSON,JOHN
12:25	MISSED FT by WILLIAMS,TREVION			
12:24				REBOUND (DEF) by BONE,JORDAN
12:11				MISSED 3PTR by TURNER,LAMONTE
12:08	REBOUND (DEF) by HUNTER JR.,ERIC			
12:02	GOOD! 3PTR by WHEELER,AARON	49-63	V 14	
12:02	ASSIST by HUNTER JR.,ERIC			
11:47	FOUL (PERSONAL) by HUNTER JR.,ERIC			
11:47				
11:47				SUB OUT: FULKERSON,JOHN
11:47				SUB IN: WILLIAMS,GRANT
11:37				MISSED LAYUP by SCHOFIELD,ADMIRAL
11:33				REBOUND (OFF) by WILLIAMS,GRANT
11:33		51-63	V 12	GOOD! LAYUP by WILLIAMS,GRANT
11:19	MISSED 3PTR by WHEELER,AARON			
11:15				REBOUND (DEF) by BOWDEN,JORDAN
11:02				MISSED JUMPER by BONE,JORDAN
10:59	REBOUND (DEF) by WHEELER,AARON			
10:52	GOOD! LAYUP by EDWARDS,CARSEN	51-65	V 14	
10:35		53-65	V 12	GOOD! LAYUP by WILLIAMS,GRANT
10:14	MISSED JUMPER by WILLIAMS,TREVION			
10:13				REBOUND (DEF) by SCHOFIELD,ADMIRAL
10:13				SUB OUT: BONE,JORDAN
10:13				SUB IN: ALEXANDER,KYLE
10:13				SUB OUT: WILLIAMS,GRANT
10:13				SUB IN: FULKERSON,JOHN
10:13	SUB OUT: WILLIAMS,TREVION			
10:13	SUB IN: HAARMS,MATT			
10:13	SUB OUT: HUNTER JR.,ERIC			
10:13	SUB IN: EASTERN,NOJEL			
09:59				TURNOVER (BADPASS) by BOWDEN,JORDAN
09:59	STEAL by STEFANOVIC,SASHA			
09:41	TURNOVER (LOSTBALL) by STEFANOVIC,SASHA			
09:41				STEAL by ALEXANDER,KYLE
09:16				SUB OUT: FULKERSON,JOHN
09:16				SUB IN: WILLIAMS,GRANT
09:14		56-65	V 9	GOOD! 3PTR by SCHOFIELD,ADMIRAL
09:14				ASSIST by WILLIAMS,GRANT
08:52	MISSED 3PTR by EDWARDS,CARSEN			
08:49				REBOUND (DEF) by WILLIAMS,GRANT
08:41		58-65	V 7	GOOD! LAYUP by SCHOFIELD,ADMIRAL
08:23	TURNOVER (LOSTBALL) by WHEELER,AARON			
08:23				STEAL by BOWDEN,JORDAN
08:20	FOUL (PERSONAL) by STEFANOVIC,SASHA			
08:20		59-65	V 6	GOOD! FT by BOWDEN,JORDAN
08:20				SUB OUT: SCHOFIELD,ADMIRAL
08:20				SUB IN: BONE,JORDAN
08:20	SUB OUT: WHEELER,AARON			
08:20	SUB IN: CLINE,RYAN			
08:20	SUB OUT: STEFANOVIC,SASHA			
08:20	SUB IN: EIFERT,GRADY			
08:20		60-65	V 5	GOOD! FT by BOWDEN,JORDAN
08:11				FOUL (PERSONAL) by WILLIAMS,GRANT
08:11				SUB OUT: WILLIAMS,GRANT
08:11				SUB IN: SCHOFIELD,ADMIRAL
08:11	MISSED FT by EASTERN,NOJEL			
08:09				REBOUND (DEF) by BONE,JORDAN
07:51		62-65	V 3	GOOD! LAYUP by TURNER,LAMONTE
07:20	MISSED LAYUP by EDWARDS,CARSEN			
07:20				BLOCK by ALEXANDER,KYLE
07:19	REBOUND (OFF) by TEAM			
07:19				
07:18	TURNOVER (BADPASS) by EIFERT,GRADY			
06:58		65-65	T	GOOD! 3PTR by TURNER,LAMONTE

Time	VISITORS: Purdue	Score	Margin	HOME: Tennessee
06:58				ASSIST by BONE,JORDAN
06:42	GOOD! LAYUP by EASTERN,NOJEL	65-67	V 2	
06:17				MISSED LAYUP by ALEXANDER,KYLE
06:13				REBOUND (OFF) by ALEXANDER,KYLE
06:13		67-67	T	GOOD! LAYUP by ALEXANDER,KYLE
05:57	MISSED 3PTR by EDWARDS,CARSEN			
05:54				REBOUND (DEF) by TURNER,LAMONTE
05:25		70-67	H 3	GOOD! 3PTR by SCHOFIELD,ADMIRAL
05:25				ASSIST by BOWDEN,JORDAN
05:04	GOOD! 3PTR by CLINE,RYAN	70-70	T	
05:04	ASSIST by EDWARDS,CARSEN			
04:43	FOUL (PERSONAL) by EDWARDS,CARSEN			
04:43		71-70	H 1	GOOD! FT by SCHOFIELD,ADMIRAL
04:43		72-70	H 2	GOOD! FT by SCHOFIELD,ADMIRAL
04:24	MISSED JUMPER by EDWARDS,CARSEN			
04:22				REBOUND (DEF) by TEAM
04:00	FOUL (PERSONAL) by EIFERT,GRADY			
04:00		73-70	H 3	GOOD! FT by SCHOFIELD,ADMIRAL
04:00				MISSED FT by SCHOFIELD,ADMIRAL
03:59	REBOUND (DEF) by EIFERT,GRADY			
03:37	GOOD! 3PTR by CLINE,RYAN	73-73	T	
03:37	ASSIST by EASTERN,NOJEL			
03:06		75-73	H 2	GOOD! LAYUP by ALEXANDER,KYLE
03:06				ASSIST by SCHOFIELD,ADMIRAL
02:46	GOOD! 3PTR by CLINE,RYAN	75-76	V 1	
02:46	ASSIST by HAARMS,MATT			
02:29		78-76	H 2	GOOD! 3PTR by SCHOFIELD,ADMIRAL
02:29				ASSIST by TURNER,LAMONTE
02:06	MISSED DUNK by HAARMS,MATT			
02:06				BLOCK by ALEXANDER,KYLE
02:02	REBOUND (OFF) by EIFERT,GRADY			
02:00	MISSED 3PTR by EDWARDS,CARSEN			
02:00	REBOUND (OFF) by EIFERT,GRADY			
02:00				FOUL (PERSONAL) by ALEXANDER,KYLE
02:00				SUB OUT: ALEXANDER,KYLE
02:00				SUB IN: WILLIAMS,GRANT
02:00	GOOD! FT by EIFERT,GRADY	78-77	H 1	
02:00	MISSED FT by EIFERT,GRADY			
01:59				REBOUND (DEF) by BOWDEN,JORDAN
01:44				MISSED 3PTR by BOWDEN,JORDAN
01:40	REBOUND (DEF) by CLINE,RYAN			
01:29	TIMEOUT 30SEC			
01:25	MISSED LAYUP by EASTERN,NOJEL			
01:22				REBOUND (DEF) by SCHOFIELD,ADMIRAL
01:07		80-77	H 3	GOOD! DUNK by WILLIAMS,GRANT
01:07				ASSIST by TURNER,LAMONTE
00:37	GOOD! 3PTR by CLINE,RYAN	80-80	T	
00:29				TIMEOUT 30SEC
00:09				MISSED LAYUP by TURNER,LAMONTE
00:08				REBOUND (OFF) by WILLIAMS,GRANT
00:08		82-80	H 2	GOOD! DUNK by WILLIAMS,GRANT
00:08	TIMEOUT TEAM			
00:04	MISSED LAYUP by EDWARDS,CARSEN			
00:04				BLOCK by WILLIAMS,GRANT
00:02	REBOUND (OFF) by TEAM			
00:02				SUB OUT: BONE,JORDAN
00:02				SUB IN: ALEXANDER,KYLE
00:01				FOUL (PERSONAL) by TURNER,LAMONTE
00:01	MISSED FT by EDWARDS,CARSEN			
00:01	REBOUND (OFF) by TEAM			
00:01	GOOD! FT by EDWARDS,CARSEN	82-81	H 1	
00:01	GOOD! FT by EDWARDS,CARSEN	82-82	T	
00:01				SUB OUT: ALEXANDER,KYLE
00:01				SUB IN: BONE,JORDAN
00:00				TIMEOUT TEAM
00:00	SUB OUT: EDWARDS,CARSEN			
00:00	SUB IN: WHEELER,AARON			

Purdue 82, Tennessee 82

Points from (This Period)	PUR	TEN
In the Paint	10	22
Off Turns	2	13
2nd Chance	3	7
Fast Break	2	2
Bench	3	6

Official Play-By-Play

**Purdue vs Tennessee**

**Overtime**

**March 28, 2019 at KFC Yum! Center (Denny Crum Court) - Louisville, KY**



**Period 3**

**Starters:**

**Purdue:** 3 EDWARDS,CARSEN (G); 14 CLINE,RYAN (G); 20 EASTERN,NOJEL (G); 24 EIFERT,GRADY (F); 32 HAARMS,MATT (F);

**Tennessee:** 0 BONE,JORDAN (G); 1 TURNER,LAMONTE (G); 2 WILLIAMS,GRANT (F); 5 SCHOFIELD,ADMIRAL (G); 11 ALEXANDER,KYLE (F);

Time	VISITORS: Purdue	Score	Margin	HOME: Tennessee
04:37				FOUL (PERSONAL) by ALEXANDER,KYLE
04:37	GOOD! FT by HAARMS,MATT	82-83	V 1	
04:37	SUB OUT: CLINE,RYAN			
04:37	SUB IN: HUNTER JR.,ERIC			
04:37	MISSED FT by HAARMS,MATT			
04:37				REBOUND (DEF) by ALEXANDER,KYLE
04:25				MISSED 3PTR by TURNER,LAMONTE
04:21	REBOUND (DEF) by HAARMS,MATT			
03:58	MISSED LAYUP by EIFERT,GRADY			
03:55	REBOUND (OFF) by EASTERN,NOJEL			
03:55	GOOD! LAYUP by EASTERN,NOJEL	82-85	V 3	
03:41	FOUL (PERSONAL) by EASTERN,NOJEL			
03:39				SUB OUT: TURNER,LAMONTE
03:39				SUB IN: WILLIAMS,GRANT
03:39		83-85	V 2	GOOD! FT by ALEXANDER,KYLE
03:39	SUB OUT: HUNTER JR.,ERIC			
03:39	SUB IN: CLINE,RYAN			
03:39		84-85	V 1	GOOD! FT by ALEXANDER,KYLE
03:23	MISSED LAYUP by HAARMS,MATT			
03:21				REBOUND (DEF) by ALEXANDER,KYLE
03:02				MISSED 3PTR by BONE,JORDAN
03:01	REBOUND (DEF) by EIFERT,GRADY			
03:01				FOUL (PERSONAL) by ALEXANDER,KYLE
03:01				SUB OUT: ALEXANDER,KYLE
03:01				SUB IN: TURNER,LAMONTE
03:01	GOOD! FT by EIFERT,GRADY	84-86	V 2	
03:01	GOOD! FT by EIFERT,GRADY	84-87	V 3	
02:47				MISSED JUMPER by SCHOFIELD,ADMIRAL
02:42	REBOUND (DEF) by EASTERN,NOJEL			
02:17	GOOD! LAYUP by EDWARDS,CARSEN	84-89	V 5	
02:00	FOUL (PERSONAL) by CLINE,RYAN			
02:00	SUB OUT: CLINE,RYAN			
02:00	SUB IN: HUNTER JR.,ERIC			
02:00				MISSED FT by TURNER,LAMONTE
01:58	REBOUND (DEF) by EASTERN,NOJEL			
01:38	GOOD! DUNK by HAARMS,MATT	84-91	V 7	
01:38	ASSIST by EIFERT,GRADY			
01:25		86-91	V 5	GOOD! DUNK by WILLIAMS,GRANT
01:25				ASSIST by SCHOFIELD,ADMIRAL
01:13				FOUL (PERSONAL) by BOWDEN,JORDAN
01:13	MISSED FT by EASTERN,NOJEL			
01:13	REBOUND (OFF) by TEAM			
01:13	GOOD! FT by EASTERN,NOJEL	86-92	V 6	
01:07	FOUL (PERSONAL) by EIFERT,GRADY			
01:07				MISSED FT by WILLIAMS,GRANT
01:07				REBOUND (OFF) by TEAM
01:07		87-92	V 5	GOOD! FT by WILLIAMS,GRANT
01:07				FOUL (PERSONAL) by BOWDEN,JORDAN
01:07				SUB OUT: BOWDEN,JORDAN
01:07				SUB IN: JOHNSON,JALEN
01:07	GOOD! FT by EDWARDS,CARSEN	87-93	V 6	
01:07	GOOD! FT by EDWARDS,CARSEN	87-94	V 7	
01:00				MISSED 3PTR by WILLIAMS,GRANT
00:55	REBOUND (DEF) by HUNTER JR.,ERIC			
00:51				FOUL (PERSONAL) by WILLIAMS,GRANT
00:51				SUB OUT: WILLIAMS,GRANT
00:51				SUB IN: FULKERSON,JOHN
00:51	MISSED FT by HUNTER JR.,ERIC			
00:51	REBOUND (OFF) by TEAM			
00:51	GOOD! FT by HUNTER JR.,ERIC	87-95	V 8	
00:39		89-95	V 6	GOOD! JUMPER by FULKERSON,JOHN [PNT]
00:39	FOUL (PERSONAL) by HAARMS,MATT			
00:39				MISSED FT by FULKERSON,JOHN
00:38	REBOUND (DEF) by EIFERT,GRADY			
00:37				FOUL (PERSONAL) by TURNER,LAMONTE
00:37	GOOD! FT by EIFERT,GRADY	89-96	V 7	
00:37	MISSED FT by EIFERT,GRADY			
00:36				REBOUND (DEF) by SCHOFIELD,ADMIRAL
00:30				MISSED 3PTR by SCHOFIELD,ADMIRAL
00:27	REBOUND (DEF) by EIFERT,GRADY			
00:25				FOUL (PERSONAL) by FULKERSON,JOHN
00:25	GOOD! FT by HUNTER JR.,ERIC	89-97	V 8	
00:25	MISSED FT by HUNTER JR.,ERIC			
00:24				REBOUND (DEF) by FULKERSON,JOHN
00:20		92-97	V 5	GOOD! 3PTR by BONE,JORDAN
00:19				TIMEOUT TEAM

Time	VISITORS: Purdue	Score	Margin	HOME: Tennessee
00:17				FOUL (PERSONAL) by JOHNSON, JALEN
00:17	MISSED FT by EDWARDS, CARSEN			
00:17	REBOUND (OFF) by TEAM			
00:17	GOOD! FT by EDWARDS, CARSEN	92-98	V 6	
00:10				MISSED JUMPER by BONE, JORDAN
00:07	REBOUND (DEF) by EDWARDS, CARSEN			
00:06				FOUL (PERSONAL) by FULKERSON, JOHN
00:06	MISSED FT by EDWARDS, CARSEN			
00:06	REBOUND (OFF) by TEAM			
00:06	GOOD! FT by EDWARDS, CARSEN	92-99	V 7	
00:00		94-99	V 5	GOOD! DUNK by SCHOFIELD, ADMIRAL

**Purdue 99, Tennessee 94**

Points from (This Period)	PUR	TEN
In the Paint	6	6
Off Turns	0	0
2nd Chance	2	0
Fast Break	0	0
Bench	2	2

**Official Scoring/Possession Reference Chart**  
**Purdue vs Tennessee**  
**Period 1**  
**March 28, 2019 at KFC Yum! Center (Denny Crum Court) - Louisville, KY**



**Period 1**

**Starters:**

**Purdue:** 3 EDWARDS,CARSEN (G); 14 CLINE,RYAN (G); 20 EASTERN,NOJEL (G); 24 EIFERT,GRADY (F); 32 HAARMS,MATT (F);

**Tennessee:** 0 BONE,JORDAN (G); 1 TURNER,LAMONTE (G); 2 WILLIAMS,GRANT (F); 5 SCHOFIELD,ADMIRAL (G); 11 ALEXANDER,KYLE (F);

Time	VISITORS: Purdue	Score	Margin	HOME: Tennessee
19:45		3-0	H 3	GOOD! 3PTR by BONE,JORDAN
19:25	GOOD! JUMPER by HAARMS,MATT [PNT]	3-2	H 1	
18:34	GOOD! DUNK by EASTERN,NOJEL [FB]	3-4	V 1	
17:42	GOOD! LAYUP by EASTERN,NOJEL	3-6	V 3	
17:24		5-6	V 1	GOOD! JUMPER by BONE,JORDAN
17:05	GOOD! 3PTR by CLINE,RYAN	5-9	V 4	
16:17		7-9	V 2	GOOD! JUMPER by WILLIAMS,GRANT [PNT]
15:24	GOOD! JUMPER by WILLIAMS,TREVION [PNT]	7-11	V 4	
14:37	GOOD! JUMPER by WILLIAMS,TREVION [PNT]	7-13	V 6	
14:27		10-13	V 3	GOOD! 3PTR by BOWDEN,JORDAN
13:42		13-13	T	GOOD! 3PTR by BOWDEN,JORDAN
12:47	GOOD! LAYUP by EDWARDS,CARSEN	13-15	V 2	
12:23	GOOD! 3PTR by EDWARDS,CARSEN	13-18	V 5	
11:39	GOOD! 3PTR by WHEELER,AARON	13-21	V 8	
09:06	GOOD! DUNK by WHEELER,AARON [FB]	13-23	V 10	
08:34		15-23	V 8	GOOD! JUMPER by WILLIAMS,GRANT [PNT]
08:09	GOOD! 3PTR by EDWARDS,CARSEN	15-26	V 11	
07:16		18-26	V 8	GOOD! 3PTR by BOWDEN,JORDAN
06:26	GOOD! FT by EDWARDS,CARSEN	18-27	V 9	
05:59	GOOD! DUNK by HAARMS,MATT	18-29	V 11	
05:31		20-29	V 9	GOOD! JUMPER by WILLIAMS,GRANT [PNT]
05:07	GOOD! 3PTR by EIFERT,GRADY	20-32	V 12	
04:42		21-32	V 11	GOOD! FT by WILLIAMS,GRANT
04:42		22-32	V 10	GOOD! FT by WILLIAMS,GRANT
04:25	GOOD! 3PTR by EDWARDS,CARSEN	22-35	V 13	
03:30		24-35	V 11	GOOD! DUNK by ALEXANDER,KYLE
03:02	GOOD! JUMPER by CLINE,RYAN	24-37	V 13	
02:39		25-37	V 12	GOOD! FT by BOWDEN,JORDAN
02:27	GOOD! 3PTR by EDWARDS,CARSEN	25-40	V 15	
02:03		27-40	V 13	GOOD! LAYUP by TURNER,LAMONTE
00:30		28-40	V 12	GOOD! FT by SCHOFIELD,ADMIRAL

**Purdue 40, Tennessee 28**

**Official Scoring/Possession Reference Chart**  
**Purdue vs Tennessee**  
**Period 2**  
**March 28, 2019 at KFC Yum! Center (Denny Crum Court) - Louisville, KY**



**Period 2**

**Starters:**

**Purdue:** 3 EDWARDS,CARSEN (G); 14 CLINE,RYAN (G); 20 EASTERN,NOJEL (G); 24 EIFERT,GRADY (F); 32 HAARMS,MATT (F);

**Tennessee:** 0 BONE,JORDAN (G); 1 TURNER,LAMONTE (G); 2 WILLIAMS,GRANT (F); 5 SCHOFIELD,ADMIRAL (G); 11 ALEXANDER,KYLE (F);

Time	VISITORS: Purdue	Score	Margin	HOME: Tennessee
19:21		30-40	V 10	GOOD! JUMPER by SCHOFIELD,ADMIRAL
19:01	GOOD! DUNK by HAARMS,MATT	30-42	V 12	
18:35		32-42	V 10	GOOD! LAYUP by SCHOFIELD,ADMIRAL
18:10	GOOD! JUMPER by CLINE,RYAN	32-44	V 12	
17:34	GOOD! LAYUP by EASTERN,NOJEL [FB]	32-46	V 14	
17:11		33-46	V 13	GOOD! FT by ALEXANDER,KYLE
16:45	GOOD! 3PTR by CLINE,RYAN	33-49	V 16	
16:19	GOOD! JUMPER by CLINE,RYAN	33-51	V 18	
15:58		36-51	V 15	GOOD! 3PTR by TURNER,LAMONTE
15:36	GOOD! JUMPER by HAARMS,MATT [PNT]	36-53	V 17	
15:09		39-53	V 14	GOOD! 3PTR by TURNER,LAMONTE
14:27		41-53	V 12	GOOD! LAYUP by WILLIAMS,GRANT
13:56	GOOD! 3PTR by CLINE,RYAN	41-56	V 15	
13:37		44-56	V 12	GOOD! 3PTR by BOWDEN,JORDAN
13:37		45-56	V 11	GOOD! FT by BOWDEN,JORDAN
13:19		47-56	V 9	GOOD! LAYUP by TURNER,LAMONTE [FB]
12:55	GOOD! 3PTR by EDWARDS,CARSEN	47-59	V 12	
12:39		49-59	V 10	GOOD! JUMPER by BONE,JORDAN
12:25	GOOD! FT by EDWARDS,CARSEN	49-60	V 11	
12:02	GOOD! 3PTR by WHEELER,AARON	49-63	V 14	
11:33		51-63	V 12	GOOD! LAYUP by WILLIAMS,GRANT
10:52	GOOD! LAYUP by EDWARDS,CARSEN	51-65	V 14	
10:35		53-65	V 12	GOOD! LAYUP by WILLIAMS,GRANT
09:14		56-65	V 9	GOOD! 3PTR by SCHOFIELD,ADMIRAL
08:41		58-65	V 7	GOOD! LAYUP by SCHOFIELD,ADMIRAL
08:20		59-65	V 6	GOOD! FT by BOWDEN,JORDAN
08:20		60-65	V 5	GOOD! FT by BOWDEN,JORDAN
07:51		62-65	V 3	GOOD! LAYUP by TURNER,LAMONTE
06:58		65-65	T	GOOD! 3PTR by TURNER,LAMONTE
06:42	GOOD! LAYUP by EASTERN,NOJEL	65-67	V 2	
06:13		67-67	T	GOOD! LAYUP by ALEXANDER,KYLE
05:25		70-67	H 3	GOOD! 3PTR by SCHOFIELD,ADMIRAL
05:04	GOOD! 3PTR by CLINE,RYAN	70-70	T	
04:43		71-70	H 1	GOOD! FT by SCHOFIELD,ADMIRAL
04:43		72-70	H 2	GOOD! FT by SCHOFIELD,ADMIRAL
04:00		73-70	H 3	GOOD! FT by SCHOFIELD,ADMIRAL
03:37	GOOD! 3PTR by CLINE,RYAN	73-73	T	
03:06		75-73	H 2	GOOD! LAYUP by ALEXANDER,KYLE
02:46	GOOD! 3PTR by CLINE,RYAN	75-76	V 1	
02:29		78-76	H 2	GOOD! 3PTR by SCHOFIELD,ADMIRAL
02:00	GOOD! FT by EIFERT,GRADY	78-77	H 1	
01:07		80-77	H 3	GOOD! DUNK by WILLIAMS,GRANT
00:37	GOOD! 3PTR by CLINE,RYAN	80-80	T	
00:08		82-80	H 2	GOOD! DUNK by WILLIAMS,GRANT
00:01	GOOD! FT by EDWARDS,CARSEN	82-81	H 1	
00:01	GOOD! FT by EDWARDS,CARSEN	82-82	T	

**Purdue 82, Tennessee 82**



**Official Scoring/Possession Reference Chart**  
**Purdue vs Tennessee**  
**Period 3**  
**March 28, 2019 at KFC Yum! Center (Denny Crum Court) - Louisville, KY**



**Period 3**

**Starters:**

**Purdue:** 3 EDWARDS,CARSEN (G); 14 CLINE,RYAN (G); 20 EASTERN,NOJEL (G); 24 EIFERT,GRADY (F); 32 HAARMS,MATT (F);

**Tennessee:** 0 BONE,JORDAN (G); 1 TURNER,LAMONTE (G); 2 WILLIAMS,GRANT (F); 5 SCHOFIELD,ADMIRAL (G); 11 ALEXANDER,KYLE (F);

Time	VISITORS: Purdue	Score	Margin	HOME: Tennessee
04:37	GOOD! FT by HAARMS,MATT	82-83	V 1	
03:55	GOOD! LAYUP by EASTERN,NOJEL	82-85	V 3	
03:39		83-85	V 2	GOOD! FT by ALEXANDER,KYLE
03:39		84-85	V 1	GOOD! FT by ALEXANDER,KYLE
03:01	GOOD! FT by EIFERT,GRADY	84-86	V 2	
03:01	GOOD! FT by EIFERT,GRADY	84-87	V 3	
02:17	GOOD! LAYUP by EDWARDS,CARSEN	84-89	V 5	
01:38	GOOD! DUNK by HAARMS,MATT	84-91	V 7	
01:25		86-91	V 5	GOOD! DUNK by WILLIAMS,GRANT
01:13	GOOD! FT by EASTERN,NOJEL	86-92	V 6	
01:07		87-92	V 5	GOOD! FT by WILLIAMS,GRANT
01:07	GOOD! FT by EDWARDS,CARSEN	87-93	V 6	
01:07	GOOD! FT by EDWARDS,CARSEN	87-94	V 7	
00:51	GOOD! FT by HUNTER JR.,ERIC	87-95	V 8	
00:39		89-95	V 6	GOOD! JUMPER by FULKERSON,JOHN [PNT]
00:37	GOOD! FT by EIFERT,GRADY	89-96	V 7	
00:25	GOOD! FT by HUNTER JR.,ERIC	89-97	V 8	
00:20		92-97	V 5	GOOD! 3PTR by BONE,JORDAN
00:17	GOOD! FT by EDWARDS,CARSEN	92-98	V 6	
00:06	GOOD! FT by EDWARDS,CARSEN	92-99	V 7	
00:00		94-99	V 5	GOOD! DUNK by SCHOFIELD,ADMIRAL

**Purdue 99, Tennessee 94**

**Official Substitutions Log**  
**Purdue vs Tennessee**  
**Period 1**  
**March 28, 2019 at KFC Yum! Center (Denny Crum Court) - Louisville, KY**

VISITORS: Purdue	Time	Score	HOME: Tennessee
3 EDWARDS, CARSEN			0 BONE, JORDAN
14 CLINE, RYAN			1 TURNER, LAMONTE
20 EASTERN, NOJEL			2 WILLIAMS, GRANT
24 EIFERT, GRADY			5 SCHOFIELD, ADMIRAL
32 HAARMS, MATT			11 ALEXANDER, KYLE
	16:15	9-7	SUB OUT: SCHOFIELD, ADMIRAL
	16:15		SUB IN: FULKERSON, JOHN
	16:15		SUB OUT: ALEXANDER, KYLE
	16:15		SUB IN: BOWDEN, JORDAN
SUB OUT: 20 EASTERN, NOJEL	16:15		
SUB IN: 2 HUNTER JR., ERIC	16:15		
SUB OUT: 32 HAARMS, MATT	15:57	9-7	
SUB IN: 50 WILLIAMS, TREVION	15:57		
	15:28	9-7	SUB OUT: BONE, JORDAN
	15:28		SUB IN: SCHOFIELD, ADMIRAL
	13:44	13-10	SUB OUT: FULKERSON, JOHN
	13:44		SUB IN: ALEXANDER, KYLE
	13:44		SUB OUT: WILLIAMS, GRANT
	13:44		SUB IN: BONE, JORDAN
SUB OUT: 24 EIFERT, GRADY	13:44		
SUB IN: 1 WHEELER, AARON	13:44		
SUB OUT: 50 WILLIAMS, TREVION	13:44		
SUB IN: 32 HAARMS, MATT	13:44		
SUB OUT: 2 HUNTER JR., ERIC	13:44		
SUB IN: 20 EASTERN, NOJEL	13:44		
SUB OUT: 14 CLINE, RYAN	13:28	13-13	
SUB IN: 55 STEFANOVIC, SASHA	13:28		
	11:56	18-13	SUB OUT: ALEXANDER, KYLE
	11:56		SUB IN: WILLIAMS, GRANT
SUB OUT: 32 HAARMS, MATT	11:08	21-13	
SUB IN: 50 WILLIAMS, TREVION	11:08		
	08:42	23-13	SUB OUT: BOWDEN, JORDAN
	08:42		SUB IN: PONS, YVES
SUB OUT: 1 WHEELER, AARON	08:42		
SUB IN: 2 HUNTER JR., ERIC	08:42		
SUB OUT: 20 EASTERN, NOJEL	08:42		
SUB IN: 14 CLINE, RYAN	08:42		
SUB OUT: 55 STEFANOVIC, SASHA	08:42		
SUB IN: 24 EIFERT, GRADY	08:42		
	08:34	23-15	SUB OUT: SCHOFIELD, ADMIRAL
	08:34		SUB IN: FULKERSON, JOHN
	07:42	26-15	SUB OUT: TURNER, LAMONTE
	07:42		SUB IN: BOWDEN, JORDAN
SUB OUT: 50 WILLIAMS, TREVION	07:28	26-15	
SUB IN: 32 HAARMS, MATT	07:28		
	06:38	26-18	SUB OUT: PONS, YVES
	06:38		SUB IN: SCHOFIELD, ADMIRAL
	04:42	32-20	SUB OUT: BONE, JORDAN
	04:42		SUB IN: ALEXANDER, KYLE
	04:42		SUB OUT: FULKERSON, JOHN
	04:42		SUB IN: TURNER, LAMONTE
	04:04	35-22	SUB OUT: WILLIAMS, GRANT
	04:04		SUB IN: BONE, JORDAN
SUB OUT: 24 EIFERT, GRADY	04:04		
SUB IN: 1 WHEELER, AARON	04:04		
SUB IN: 55 STEFANOVIC, SASHA	02:39	37-24	
SUB OUT: 14 CLINE, RYAN	02:39		
SUB IN: 50 WILLIAMS, TREVION	02:39		
SUB OUT: 32 HAARMS, MATT	02:39		
	02:39		SUB OUT: BOWDEN, JORDAN
	02:39		SUB IN: WILLIAMS, GRANT
	01:46	40-27	SUB OUT: WILLIAMS, GRANT
	01:46		SUB IN: BOWDEN, JORDAN
SUB OUT: 50 WILLIAMS, TREVION	01:46		
SUB IN: 32 HAARMS, MATT	01:46		

**Purdue 40, Tennessee 28**

**Official Substitutions Log**  
**Purdue vs Tennessee**  
**Period 2**  
**March 28, 2019 at KFC Yum! Center (Denny Crum Court) - Louisville, KY**

VISITORS: Purdue	Time	Score	HOME: Tennessee
3 EDWARDS, CARSEN			0 BONE, JORDAN
14 CLINE, RYAN			1 TURNER, LAMONTE
20 EASTERN, NOJEL			2 WILLIAMS, GRANT
24 EIFERT, GRADY			5 SCHOFIELD, ADMIRAL
32 HAARMS, MATT			11 ALEXANDER, KYLE
	18:05	44-32	SUB OUT: BONE, JORDAN
	18:05		SUB IN: BOWDEN, JORDAN
	16:22	49-33	SUB OUT: WILLIAMS, GRANT
	16:22		SUB IN: BONE, JORDAN
	15:36	53-36	SUB OUT: ALEXANDER, KYLE
	15:36		SUB IN: WILLIAMS, GRANT
SUB OUT: 20 EASTERN, NOJEL	15:35	53-36	
SUB IN: 2 HUNTER JR., ERIC	15:35		
SUB OUT: 14 CLINE, RYAN	13:37	56-44	
SUB IN: 55 STEFANOVIC, SASHA	13:37		
SUB OUT: 24 EIFERT, GRADY	12:25	60-49	
SUB IN: 1 WHEELER, AARON	12:25		
SUB OUT: 32 HAARMS, MATT	12:25		
SUB IN: 50 WILLIAMS, TREVION	12:25		
	12:25		SUB OUT: WILLIAMS, GRANT
	12:25		SUB IN: FULKERSON, JOHN
	11:47	63-49	SUB OUT: FULKERSON, JOHN
	11:47		SUB IN: WILLIAMS, GRANT
	10:13	65-53	SUB OUT: BONE, JORDAN
	10:13		SUB IN: ALEXANDER, KYLE
	10:13		SUB OUT: WILLIAMS, GRANT
	10:13		SUB IN: FULKERSON, JOHN
SUB OUT: 50 WILLIAMS, TREVION	10:13		
SUB IN: 32 HAARMS, MATT	10:13		
SUB OUT: 2 HUNTER JR., ERIC	10:13		
SUB IN: 20 EASTERN, NOJEL	10:13		
	09:16	65-53	SUB OUT: FULKERSON, JOHN
	09:16		SUB IN: WILLIAMS, GRANT
	08:20	65-59	SUB OUT: SCHOFIELD, ADMIRAL
	08:20		SUB IN: BONE, JORDAN
SUB OUT: 1 WHEELER, AARON	08:20		
SUB IN: 14 CLINE, RYAN	08:20		
SUB OUT: 55 STEFANOVIC, SASHA	08:20		
SUB IN: 24 EIFERT, GRADY	08:20		
	08:11	65-60	SUB OUT: WILLIAMS, GRANT
	08:11		SUB IN: SCHOFIELD, ADMIRAL
	02:00	76-78	SUB OUT: ALEXANDER, KYLE
	02:00		SUB IN: WILLIAMS, GRANT
	00:02	80-82	SUB OUT: BONE, JORDAN
	00:02		SUB IN: ALEXANDER, KYLE
	00:01	82-82	SUB OUT: ALEXANDER, KYLE
	00:01		SUB IN: BONE, JORDAN
SUB OUT: 3 EDWARDS, CARSEN	00:00	82-82	
SUB IN: 1 WHEELER, AARON	00:00		

**Purdue 82, Tennessee 82**

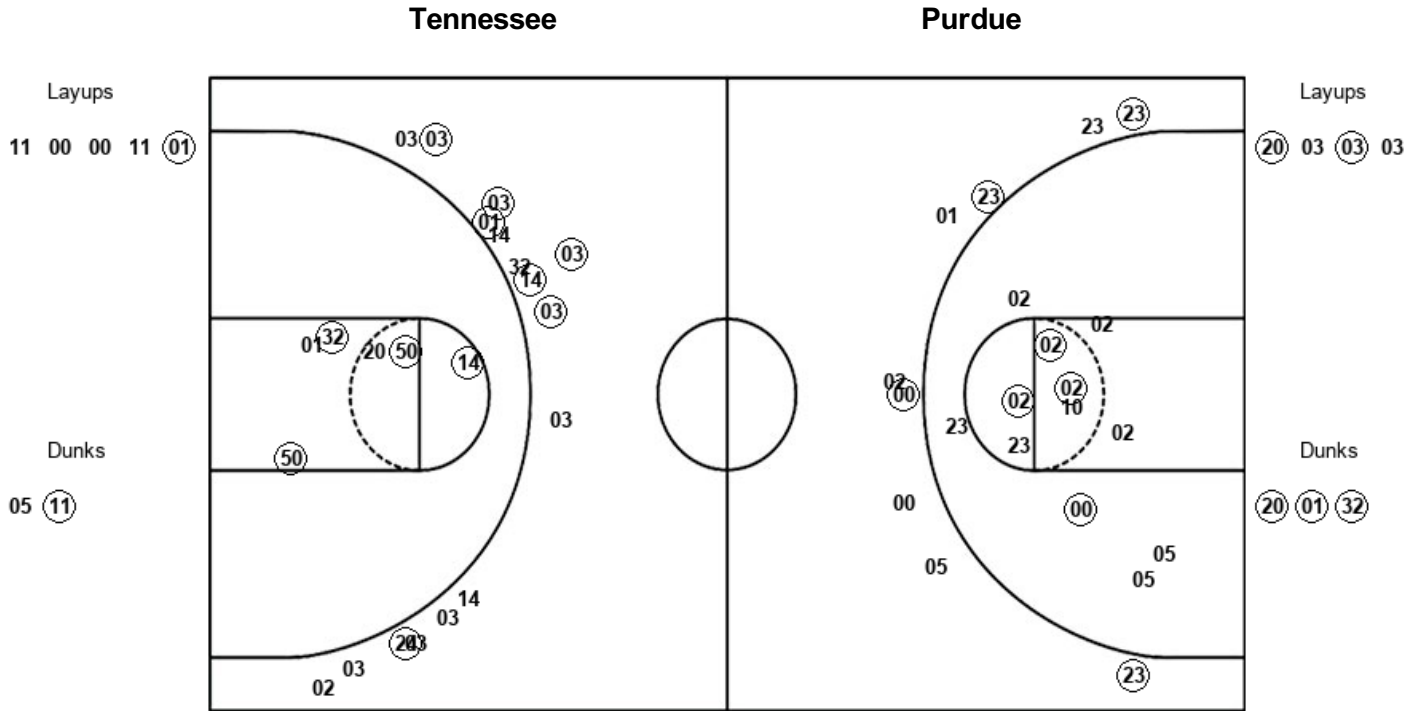
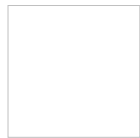


**Official Substitutions Log**  
**Purdue vs Tennessee**  
**Period 3**  
**March 28, 2019 at KFC Yum! Center (Denny Crum Court) - Louisville, KY**

<b>VISITORS: Purdue</b>	<b>Time</b>	<b>Score</b>	<b>HOME: Tennessee</b>
3 EDWARDS, CARSEN			0 BONE, JORDAN
14 CLINE, RYAN			1 TURNER, LAMONTE
20 EASTERN, NOJEL			2 WILLIAMS, GRANT
24 EIFERT, GRADY			5 SCHOFIELD, ADMIRAL
32 HAARMS, MATT			11 ALEXANDER, KYLE
SUB OUT: 14 CLINE, RYAN	04:37	83-82	
SUB IN: 2 HUNTER JR., ERIC	04:37		
	03:39	85-82	SUB OUT: TURNER, LAMONTE
	03:39		SUB IN: WILLIAMS, GRANT
SUB OUT: 2 HUNTER JR., ERIC	03:39		
SUB IN: 14 CLINE, RYAN	03:39		
	03:01	85-84	SUB OUT: ALEXANDER, KYLE
	03:01		SUB IN: TURNER, LAMONTE
SUB OUT: 14 CLINE, RYAN	02:00	89-84	
SUB IN: 2 HUNTER JR., ERIC	02:00		
	01:07	92-87	SUB OUT: BOWDEN, JORDAN
	01:07		SUB IN: JOHNSON, JALEN
	00:51	94-87	SUB OUT: WILLIAMS, GRANT
	00:51		SUB IN: FULKERSON, JOHN

**Purdue 99, Tennessee 94**

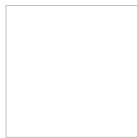
Official Shot Chart  
**Purdue vs Tennessee**  
 PERIOD 1 Shots  
 March 28, 2019 at KFC Yum! Center (Denny Crum Court) - Louisville, KY



TEN : Period 1	Made	Att	Pct
Layups	1	5	20.0
Dunks	1	2	50.0
2PT Field Goals	6	19	31.6
3PT Field Goals	4	9	44.4
<b>Total Field Goals</b>	<b>10</b>	<b>28</b>	<b>35.7</b>

PUR : Period 1	Made	Att	Pct
Layups	2	4	50.0
Dunks	3	3	100.0
2PT Field Goals	9	13	69.2
3PT Field Goals	7	16	43.8
<b>Total Field Goals</b>	<b>16</b>	<b>29</b>	<b>55.2</b>

**Official Shot Chart**  
**Purdue vs Tennessee**  
**PERIOD 2 Shots**  
 March 28, 2019 at KFC Yum! Center (Denny Crum Court) - Louisville, KY

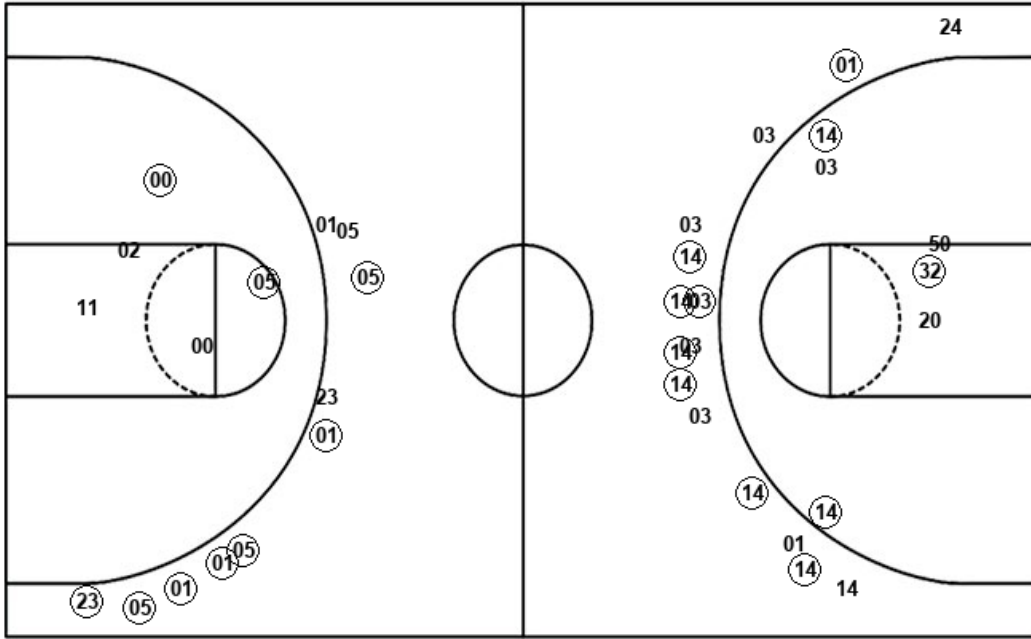


**Tennessee**

**Purdue**

Layups  
 (05) 02 (02) (01) 05  
 (02) (02) (05) (01) 11  
 (11) (11) 01

Dunks  
 (02) (02)



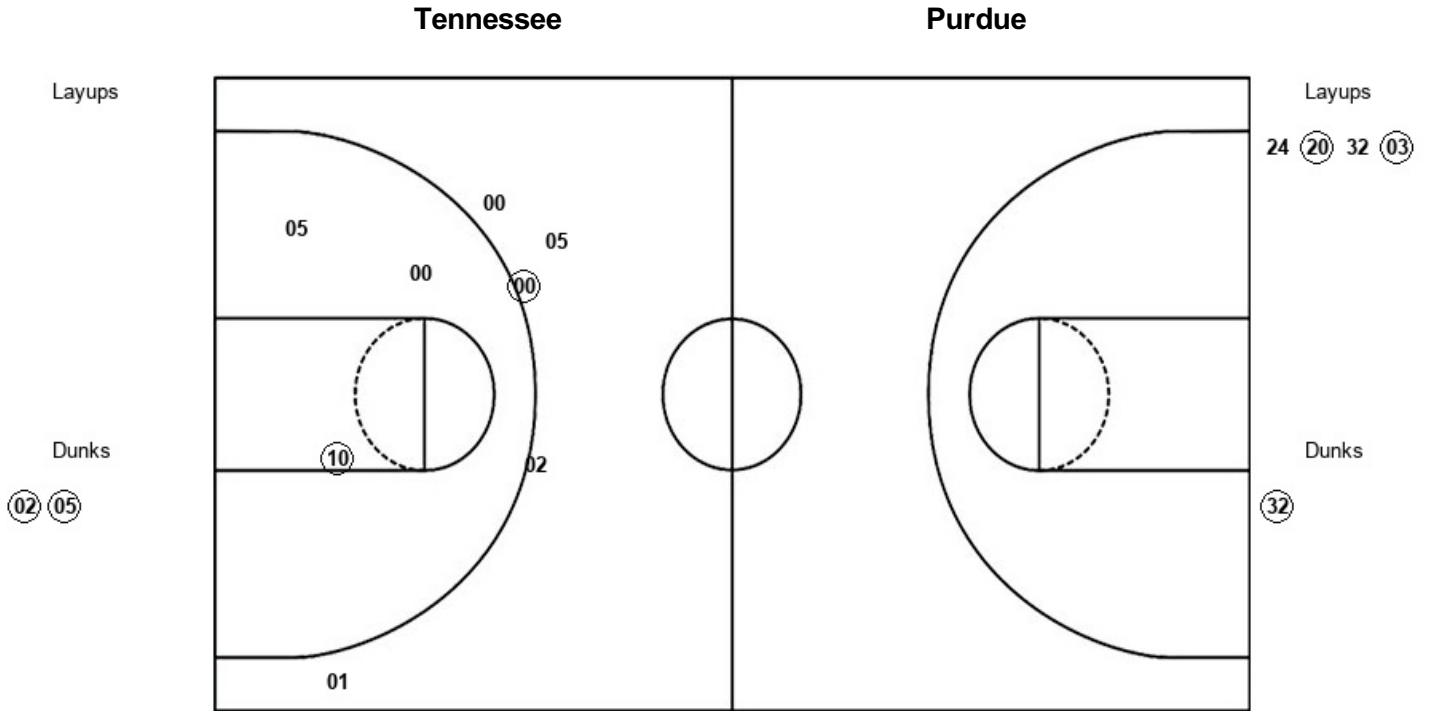
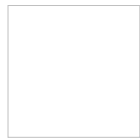
Layups  
 (20) (03) 03 (20) 20  
 03

Dunks  
 (32) 32

TEN : Period 2	Made	Att	Pct
Layups	9	13	69.2
Dunks	2	2	100.0
2PT Field Goals	13	20	65.0
3PT Field Goals	7	10	70.0
<b>Total Field Goals</b>	<b>20</b>	<b>30</b>	<b>66.7</b>

PUR : Period 2	Made	Att	Pct
Layups	3	6	50.0
Dunks	1	2	50.0
2PT Field Goals	7	14	50.0
3PT Field Goals	8	15	53.3
<b>Total Field Goals</b>	<b>15</b>	<b>29</b>	<b>51.7</b>

**Official Shot Chart**  
**Purdue vs Tennessee**  
**PERIOD 3 Shots**  
 March 28, 2019 at KFC Yum! Center (Denny Crum Court) - Louisville, KY



TEN : Period 3	Made	Att	Pct
Layups	0	0	0
Dunks	2	2	100.0
2PT Field Goals	3	5	60.0
3PT Field Goals	1	5	20.0
<b>Total Field Goals</b>	<b>4</b>	<b>10</b>	<b>40.0</b>

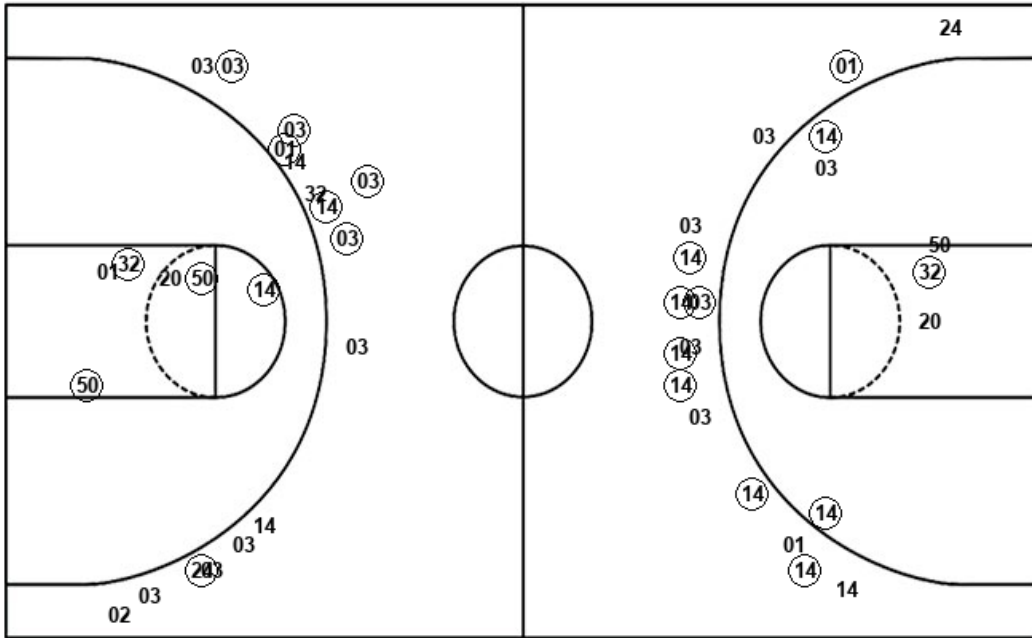
PUR : Period 3	Made	Att	Pct
Layups	2	4	50.0
Dunks	1	1	100.0
2PT Field Goals	3	5	60.0
3PT Field Goals	0	0	0
<b>Total Field Goals</b>	<b>3</b>	<b>5</b>	<b>60.0</b>



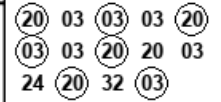
**Official Shot Chart**  
**Purdue vs Tennessee**  
**Purdue Team Shots**  
 March 28, 2019 at KFC Yum! Center (Denny Crum Court) - Louisville, KY



Layups

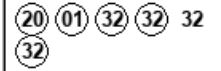


Layups



Dunks

Dunks



PUR : Period 1	Made	Att	Pct
Layups	2	4	50.0
Dunks	3	3	100.0
2PT Field Goals	9	13	69.2
3PT Field Goals	7	16	43.8
<b>Total Field Goals</b>	<b>16</b>	<b>29</b>	<b>55.2</b>

PUR : Period 2	Made	Att	Pct
Layups	3	6	50.0
Dunks	1	2	50.0
2PT Field Goals	7	14	50.0
3PT Field Goals	8	15	53.3
<b>Total Field Goals</b>	<b>15</b>	<b>29</b>	<b>51.7</b>

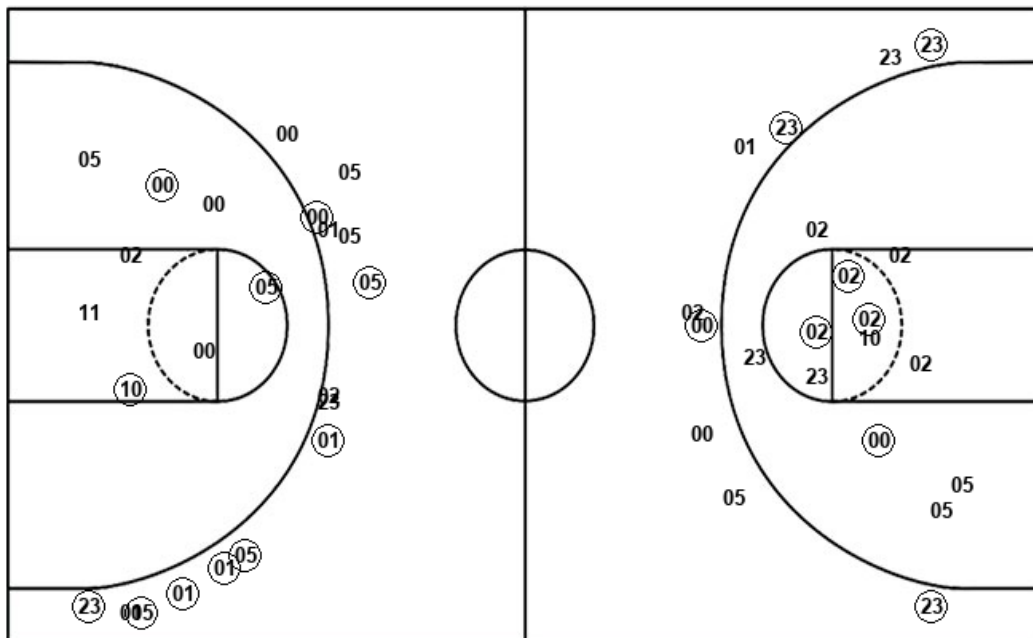
PUR : Period 3	Made	Att	Pct
Layups	2	4	50.0
Dunks	1	1	100.0
2PT Field Goals	3	5	60.0
3PT Field Goals	0	0	0
<b>Total Field Goals</b>	<b>3</b>	<b>5</b>	<b>60.0</b>

**Official Shot Chart**  
**Purdue vs Tennessee**  
**Tennessee Team Shots**  
 March 28, 2019 at KFC Yum! Center (Denny Crum Court) - Louisville, KY



Layups

Dunks



Layups

11 00 00 11 (01)  
 (05) 02 (02) (01) 05  
 (02) (02) (05) (01) 11  
 (11) (11) 01

Dunks

05 (11) (02) (02) (02)  
 (05)

TEN : Period 1	Made	Att	Pct
Layups	1	5	20.0
Dunks	1	2	50.0
2PT Field Goals	6	19	31.6
3PT Field Goals	4	9	44.4
<b>Total Field Goals</b>	<b>10</b>	<b>28</b>	<b>35.7</b>

TEN : Period 2	Made	Att	Pct
Layups	9	13	69.2
Dunks	2	2	100.0
2PT Field Goals	13	20	65.0
3PT Field Goals	7	10	70.0
<b>Total Field Goals</b>	<b>20</b>	<b>30</b>	<b>66.7</b>

TEN : Period 3	Made	Att	Pct
Layups	0	0	0
Dunks	2	2	100.0
2PT Field Goals	3	5	60.0
3PT Field Goals	1	5	20.0
<b>Total Field Goals</b>	<b>4</b>	<b>10</b>	<b>40.0</b>