

## FINAL SCORE



**Villanova**

**61**



**Purdue**

**87**

**Hartford First and Second Rounds**

**March 24, 2019 • XL Center - Hartford, Conn.**



## FINAL STATISTICS

**Official Box Score**  
**Villanova vs Purdue**  
**Game Totals -- Final Statistics**  
**March 24, 2019 at XL Center - Hartford, Conn.**



**Villanova 61**

No.	Player	S	Pts	FG	3FG	FT	OR	DR	TR	PF	A	TO	Blk	Stl	Min	+/-
02	GILLESPIE, COLLIN		8	2-8	2-7	2-2	1	2	3	4	0	0	0	1	25	-27
04	PASCHALL, ERIC		19	7-18	2-9	3-4	1	2	3	0	2	1	0	0	37	-30
05	BOOTH, PHIL		15	5-13	2-6	3-3	1	3	4	3	2	5	0	2	37	-27
15	BEY, SADDIQ		3	1-5	1-4	0-0	1	0	1	1	1	2	0	0	30	-18
23	SAMUELS, JERMAINE		11	4-8	3-7	0-0	0	3	3	5	2	0	0	1	32	-12
03	SLATER, BRANDON		0	0-1	0-1	0-0	0	0	0	0	0	0	0	0	3	1
10	SWIDER, COLE		5	1-2	1-2	2-2	0	1	1	1	0	0	0	1	8	0
21	COSBY-ROUNDTREE, DHAMIF		0	0-1	0-0	0-0	3	1	4	1	0	1	0	1	18	-16
22	HECK, PEYTON		0	0-0	0-0	0-0	0	0	0	0	0	0	0	0	0	1
24	CREMO, JOE		0	0-2	0-2	0-0	1	2	3	0	0	0	0	1	7	-2
34	DELANEY, TIM		0	0-0	0-0	0-0	0	0	0	0	0	0	0	0	1	0
	TEAM						1	1	2	0		1				
<b>TOTALS</b>			<b>61</b>	<b>20-58</b>	<b>11-38</b>	<b>10-11</b>	<b>9</b>	<b>15</b>	<b>24</b>	<b>15</b>	<b>7</b>	<b>10</b>	<b>0</b>	<b>7</b>	<b>198</b>	

*Shooting By Period*

Period	FG	FG%	3FG	3FG%	FT	FT%
1st Half	9-24	38%	3-14	21%	3-3	100%
2nd Half	11-34	32%	8-24	33%	7-8	88%
<b>Game</b>	<b>20-58</b>	<b>34.5%</b>	<b>11-38</b>	<b>28.9%</b>	<b>10-11</b>	<b>90.9%</b>

Last FG: 2nd-01:18  
 Biggest Run: 10-0  
 Largest lead: By 1 at 1-17:46  
 Technical Fouls: None.

**Purdue 87**

No.	Player	S	Pts	FG	3FG	FT	OR	DR	TR	PF	A	TO	Blk	Stl	Min	+/-
03	EDWARDS, CARSEN		42	12-21	9-16	9-9	0	6	6	2	1	4	0	0	39	28
14	CLINE, RYAN		12	4-9	4-8	0-0	1	3	4	1	4	0	0	1	31	29
20	EASTERN, NOJEL		4	2-4	0-0	0-0	2	3	5	1	4	2	0	0	27	27
24	EIFERT, GRADY		5	1-1	1-1	2-2	2	5	7	2	5	0	0	1	32	27
32	HAARMS, MATT		18	8-12	0-1	2-2	4	5	9	2	2	0	1	0	33	29
01	WHEELER, AARON		3	1-1	1-1	0-0	0	1	1	5	1	3	1	1	7	1
02	HUNTER JR., ERIC		0	0-2	0-2	0-0	0	2	2	0	2	0	0	0	12	-1
12	BOUDREAU, EVAN		0	0-0	0-0	0-0	0	0	0	0	0	0	0	0	1	0
15	LUCE, TOMMY		0	0-0	0-0	0-0	0	0	0	0	0	0	0	0	1	-2
23	KING, KYLE		0	0-0	0-0	0-0	0	0	0	0	0	1	0	0	0	-2
50	WILLIAMS, TREVION		0	0-3	0-0	0-3	2	1	3	0	0	1	0	0	6	-3
55	STEFANOVIC, SASHA		3	1-1	1-1	0-0	0	0	0	0	0	0	0	0	9	-3
	TEAM						1	4	5	0		1				
<b>TOTALS</b>			<b>87</b>	<b>29-54</b>	<b>16-30</b>	<b>13-16</b>	<b>12</b>	<b>30</b>	<b>42</b>	<b>13</b>	<b>19</b>	<b>12</b>	<b>2</b>	<b>3</b>	<b>198</b>	

*Shooting By Period*

Period	FG	FG%	3FG	3FG%	FT	FT%
1st Half	16-33	48%	9-18	50%	2-2	100%
2nd Half	13-21	62%	7-12	58%	11-14	79%
<b>Game</b>	<b>29-54</b>	<b>53.7%</b>	<b>16-30</b>	<b>53.3%</b>	<b>13-16</b>	<b>81.3%</b>

Last FG: 2nd-02:01  
 Biggest Run: 18-0  
 Largest lead: By 35 at 2-13:39  
 Technical Fouls: None.

*Game Notes:*

Officials: Keith Kimble, Lee Cassell, Robert Riley  
 Attendance: 15031

Start Time: 2019-03-24 00:40:16  
 End Time: 2019-03-24 02:39:20  
 Game Duration: 119  
 Neutral Court;

Score	1st	2nd	TOT
VIL	24	37	61
PUR	43	44	87

VIL led for 0:23. PUR led for 37:48.  
 Game was tied for 1:24.  
 Times tied: 1      Lead Changes: 2

Points from	VIL	PUR
In the Paint	8	26
Off Turns	15	10
2nd Chance	8	12
Fast Break	2	10
Bench	5	6

**Official Box Score**  
**Villanova vs Purdue**  
**First Half Statistics Only**  
**March 24, 2019 at XL Center - Hartford, Conn.**



**Villanova 24**

No.	Player	S	Pts	FG	3FG	FT	OR	DR	TR	PF	A	TO	Blk	Stl	Min	+/-
02	GILLESPIE, COLLIN		8	2-5	2-5	2-2	1	1	2	2	0	0	0	1	13	-15
04	PASCHALL, ERIC		7	3-7	0-2	1-1	0	0	0	0	1	1	0	0	19	-19
05	BOOTH, PHIL		4	2-6	0-3	0-0	1	2	3	1	0	4	0	1	20	-19
15	BEY, SADDIQ		0	0-1	0-1	0-0	0	0	0	0	1	1	0	0	19	-16
23	SAMUELS, JERMAINE		5	2-4	1-3	0-0	0	3	3	0	1	0	0	0	19	-18
03	SLATER, BRANDON		0	0-0	0-0	0-0	0	0	0	0	0	0	0	0	0	0
10	SWIDER, COLE		0	0-0	0-0	0-0	0	0	0	0	0	0	0	0	0	0
21	COSBY-ROUNDTREE, DHAMIF		0	0-1	0-0	0-0	2	0	2	0	0	1	0	1	10	-8
22	HECK, PEYTON		0	0-0	0-0	0-0	0	0	0	0	0	0	0	0	0	0
24	CREMO, JOE		0	0-0	0-0	0-0	0	0	0	0	0	0	0	0	0	0
34	DELANEY, TIM		0	0-0	0-0	0-0	0	0	0	0	0	0	0	0	0	0
	TEAM						0	1	1	0		1				
<b>TOTALS</b>			<b>24</b>	<b>9-24</b>	<b>3-14</b>	<b>3-3</b>	<b>4</b>	<b>7</b>	<b>11</b>	<b>3</b>	<b>3</b>	<b>8</b>	<b>0</b>	<b>3</b>	<b>100</b>	

*Shooting By Period*

Period	FG	FG%	3FG	3FG%	FT	FT%
1st Half	9-24	38%	3-14	21%	3-3	100%
Game	20-58	34.5%	11-38	28.9%	10-11	90.9%

*Last FG Half: VIL 2nd-01:18*

**Purdue 43**

No.	Player	S	Pts	FG	3FG	FT	OR	DR	TR	PF	A	TO	Blk	Stl	Min	+/-
03	EDWARDS, CARSEN		17	5-9	5-9	2-2	0	2	2	1	0	1	0	0	20	19
14	CLINE, RYAN		6	2-7	2-6	0-0	0	1	1	1	2	0	0	1	18	19
20	EASTERN, NOJEL		2	1-2	0-0	0-0	2	1	3	0	2	0	0	0	12	11
24	EIFERT, GRADY		0	0-0	0-0	0-0	2	2	4	1	2	0	0	1	14	15
32	HAARMS, MATT		12	6-10	0-1	0-0	4	0	4	1	2	0	0	0	16	17
01	WHEELER, AARON		3	1-1	1-1	0-0	0	1	1	1	1	3	1	1	6	4
02	HUNTER JR., ERIC		0	0-0	0-0	0-0	0	0	0	0	2	0	0	0	8	8
12	BOUDREAU, EVAN		0	0-0	0-0	0-0	0	0	0	0	0	0	0	0	0	0
15	LUCE, TOMMY		0	0-0	0-0	0-0	0	0	0	0	0	0	0	0	0	0
23	KING, KYLE		0	0-0	0-0	0-0	0	0	0	0	0	0	0	0	0	0
50	WILLIAMS, TREVION		0	0-3	0-0	0-0	2	1	3	0	0	1	0	0	4	2
55	STEFANOVIC, SASHA		3	1-1	1-1	0-0	0	0	0	0	0	0	0	0	2	0
	TEAM						0	3	3	0		0				
<b>TOTALS</b>			<b>43</b>	<b>16-33</b>	<b>9-18</b>	<b>2-2</b>	<b>10</b>	<b>11</b>	<b>21</b>	<b>5</b>	<b>11</b>	<b>5</b>	<b>1</b>	<b>3</b>	<b>100</b>	

*Shooting By Period*

Period	FG	FG%	3FG	3FG%	FT	FT%
1st Half	16-33	48%	9-18	50%	2-2	100%
Game	29-54	53.7%	16-30	53.3%	13-16	81.3%

*Last FG Half: PUR 2nd-02:01*

*Game Notes:*

Officials: **Keith Kimble, Lee Cassell, Robert Riley**  
 Attendance: **15031**

Start Time: **2019-03-24 00:40:16**  
 End Time: **2019-03-24 02:39:20**  
 Game Duration: **119**  
 Neutral Court;

Score	1st	2nd	TOT
VIL	24	37	<b>61</b>
PUR	43	44	<b>87</b>

Points from (This Period)	VIL	PUR
In the Paint	4	14
Off Turns	10	7
2nd Chance	3	10
Fast Break	2	3
Bench	0	6

**Official Play-By-Play**  
**Villanova vs Purdue**  
**First Half**  
**March 24, 2019 at XL Center - Hartford, Conn.**



**Period 1**

**Starters:**

**Villanova:** 15 BEY,SADDIQ; 23 SAMUELS,JERMAINE; 2 GILLESPIE,COLLIN; 4 PASCHALL,ERIC; 5 BOOTH,PHIL;

**Purdue:** 14 CLINE,RYAN; 20 EASTERN,NOJEL; 24 EIFERT,GRADY; 32 HAARMS,MATT; 3 EDWARDS,CARSEN;

Time	VISITORS: Villanova	Score	Margin	HOME: Purdue
19:42				MISSED 3PTR by EDWARDS,CARSEN
19:38	REBOUND (DEF) by BOOTH,PHIL			
19:29	MISSED 3PTR by SAMUELS,JERMAINE			
19:23				REBOUND (DEF) by TEAM
19:05		2-0	H 2	GOOD! DUNK by HAARMS,MATT
19:05				ASSIST by CLINE,RYAN
18:35	GOOD! JUMPER by PASCHALL,ERIC	2-2	T	
18:13				MISSED JUMPER by HAARMS,MATT
18:07				REBOUND (OFF) by HAARMS,MATT
18:06		4-2	H 2	GOOD! LAYUP by HAARMS,MATT [PNT]
17:46	GOOD! 3PTR by GILLESPIE,COLLIN	4-5	V 1	
17:46	ASSIST by SAMUELS,JERMAINE			
17:23		7-5	H 2	GOOD! 3PTR by EDWARDS,CARSEN
17:23				ASSIST by HAARMS,MATT
16:58	MISSED 3PTR by GILLESPIE,COLLIN			
16:55				REBOUND (DEF) by EIFERT,GRADY
16:49		10-5	H 5	GOOD! 3PTR by EDWARDS,CARSEN [FB]
16:21	GOOD! 3PTR by GILLESPIE,COLLIN	10-8	H 2	
16:21	ASSIST by BEY,SADDIQ			
16:02				MISSED 3PTR by EDWARDS,CARSEN
15:57				REBOUND (OFF) by HAARMS,MATT
15:55		13-8	H 5	GOOD! 3PTR by CLINE,RYAN
15:55				ASSIST by HAARMS,MATT
15:26	MISSED JUMPER by PASCHALL,ERIC			
15:22				REBOUND (DEF) by EASTERN,NOJEL
15:13				MISSED LAYUP by EASTERN,NOJEL
15:11				REBOUND (OFF) by EIFERT,GRADY
15:09		16-8	H 8	GOOD! 3PTR by EDWARDS,CARSEN
15:09				ASSIST by EIFERT,GRADY
14:49	GOOD! LAYUP by SAMUELS,JERMAINE [PNT]	16-10	H 6	
14:37		19-10	H 9	GOOD! 3PTR by EDWARDS,CARSEN
14:02	TURNOVER (BADPASS) by PASCHALL,ERIC			
14:02				
14:02				SUB OUT: EASTERN,NOJEL
14:02				SUB IN: WILLIAMS,TREVION
14:02				SUB OUT: HAARMS,MATT
14:02				SUB IN: HUNTER JR.,ERIC
13:58				MISSED JUMPER by WILLIAMS,TREVION
13:54	REBOUND (DEF) by BOOTH,PHIL			
13:47	MISSED 3PTR by GILLESPIE,COLLIN			
13:44				REBOUND (DEF) by EDWARDS,CARSEN
13:40				MISSED 3PTR by CLINE,RYAN
13:37				REBOUND (OFF) by WILLIAMS,TREVION
13:35				MISSED 3PTR by CLINE,RYAN
13:31	REBOUND (DEF) by SAMUELS,JERMAINE			
13:18	MISSED 3PTR by BEY,SADDIQ			
13:14				REBOUND (DEF) by CLINE,RYAN
12:59				MISSED LAYUP by WILLIAMS,TREVION
12:57				REBOUND (OFF) by WILLIAMS,TREVION
12:57				MISSED LAYUP by WILLIAMS,TREVION
12:56				REBOUND (OFF) by EIFERT,GRADY
12:56	FOUL (PERSONAL) by GILLESPIE,COLLIN			
12:52				SUB OUT: EIFERT,GRADY
12:52				SUB IN: WHEELER,AARON
12:52	SUB OUT: SAMUELS,JERMAINE			
12:52	SUB IN: COSBY-ROUNDTREE,DHAMIR			
12:37				TURNOVER (BADPASS) by EDWARDS,CARSEN
12:37	STEAL by GILLESPIE,COLLIN			
12:35				FOUL (PERSONAL) by EDWARDS,CARSEN
12:35	GOOD! FT by GILLESPIE,COLLIN [FB]	19-11	H 8	
12:35	GOOD! FT by GILLESPIE,COLLIN [FB]	19-12	H 7	
12:10		22-12	H 10	GOOD! 3PTR by WHEELER,AARON
12:10				ASSIST by CLINE,RYAN
11:48	MISSED 3PTR by BOOTH,PHIL			
11:44	REBOUND (OFF) by GILLESPIE,COLLIN			
11:35	TURNOVER (TRAVEL) by BEY,SADDIQ			
11:35				
11:35				SUB OUT: WILLIAMS,TREVION
11:35				SUB IN: HAARMS,MATT
11:35				SUB OUT: CLINE,RYAN

Time	VISITORS: Villanova	Score	Margin	HOME: Purdue
11:35				SUB IN: STEFANOVIC,SASHA
11:35	SUB OUT: BEY,SADDIQ			
11:35	SUB IN: SAMUELS,JERMAINE			
11:23		25-12	H 13	GOOD! 3PTR by STEFANOVIC,SASHA
11:23				ASSIST by HUNTER JR.,ERIC
10:58	TURNOVER (BADPASS) by BOOTH,PHIL			
10:58				STEAL by WHEELER,AARON
10:53				TURNOVER (LOSTBALL) by WHEELER,AARON
10:53	STEAL by COSBY-ROUNDTREE,DHAMIR			
10:44	MISSED 3PTR by GILLESPIE,COLLIN			
10:40				REBOUND (DEF) by TEAM
10:20				FOUL (OFF) by WHEELER,AARON
10:20				TURNOVER (OFFENSIVE) by WHEELER,AARON
10:20				SUB OUT: HUNTER JR.,ERIC
10:20				SUB IN: EASTERN,NOJEL
10:20	SUB OUT: GILLESPIE,COLLIN			
10:20	SUB IN: BEY,SADDIQ			
10:03	MISSED LAYUP by BOOTH,PHIL			
10:03				BLOCK by WHEELER,AARON
09:59	REBOUND (OFF) by BOOTH,PHIL			
09:53	GOOD! 3PTR by SAMUELS,JERMAINE	25-15	H 10	
09:53	ASSIST by PASCHALL,ERIC			
09:36				SUB OUT: WHEELER,AARON
09:36				SUB IN: EIFERT,GRADY
09:36				SUB OUT: STEFANOVIC,SASHA
09:36				SUB IN: CLINE,RYAN
09:24		27-15	H 12	GOOD! DUNK by HAARMS,MATT
09:24				ASSIST by EIFERT,GRADY
08:59	GOOD! JUMPER by BOOTH,PHIL	27-17	H 10	
08:43				MISSED JUMPER by HAARMS,MATT
08:41				REBOUND (OFF) by EASTERN,NOJEL
08:39				MISSED 3PTR by EDWARDS,CARSEN
08:38	REBOUND (DEF) by TEAM			
08:38				FOUL (PERSONAL) by HAARMS,MATT
08:38				SUB OUT: HAARMS,MATT
08:38				SUB IN: WILLIAMS,TREVION
08:38	SUB OUT: PASCHALL,ERIC			
08:38	SUB IN: GILLESPIE,COLLIN			
08:25	TURNOVER (OTHER) by BOOTH,PHIL			
08:03				TURNOVER (LOSTBALL) by WILLIAMS,TREVION
08:03	STEAL by BOOTH,PHIL			
08:03	SUB OUT: COSBY-ROUNDTREE,DHAMIR			
08:03	SUB IN: PASCHALL,ERIC			
07:47	GOOD! JUMPER by PASCHALL,ERIC	27-19	H 8	
07:46				FOUL (PERSONAL) by EIFERT,GRADY
07:46				
07:46	GOOD! FT by PASCHALL,ERIC	27-20	H 7	
07:26		30-20	H 10	GOOD! 3PTR by EDWARDS,CARSEN
07:01	MISSED 3PTR by BOOTH,PHIL			
06:59				REBOUND (DEF) by WILLIAMS,TREVION
06:39	FOUL (PERSONAL) by BOOTH,PHIL			
06:39		31-20	H 11	GOOD! FT by EDWARDS,CARSEN
06:39				SUB OUT: WILLIAMS,TREVION
06:39				SUB IN: HAARMS,MATT
06:39				SUB OUT: EASTERN,NOJEL
06:39				SUB IN: HUNTER JR.,ERIC
06:39		32-20	H 12	GOOD! FT by EDWARDS,CARSEN
06:21	MISSED JUMPER by PASCHALL,ERIC			
06:18				REBOUND (DEF) by EDWARDS,CARSEN
06:13				MISSED 3PTR by CLINE,RYAN
06:09	REBOUND (DEF) by GILLESPIE,COLLIN			
06:05	MISSED 3PTR by PASCHALL,ERIC			
06:01				REBOUND (DEF) by EIFERT,GRADY
05:36				MISSED LAYUP by CLINE,RYAN
05:32				REBOUND (OFF) by HAARMS,MATT
05:32				MISSED LAYUP by HAARMS,MATT
05:32				REBOUND (OFF) by HAARMS,MATT
05:32	FOUL (PERSONAL) by GILLESPIE,COLLIN			
05:32				SUB OUT: EIFERT,GRADY
05:32				SUB IN: WHEELER,AARON
05:32	SUB OUT: GILLESPIE,COLLIN			
05:32	SUB IN: COSBY-ROUNDTREE,DHAMIR			
05:23				TURNOVER (BADPASS) by WHEELER,AARON
05:07	GOOD! JUMPER by BOOTH,PHIL	32-22	H 10	
04:50		35-22	H 13	GOOD! 3PTR by CLINE,RYAN
04:50				ASSIST by HUNTER JR.,ERIC
04:26	MISSED 3PTR by SAMUELS,JERMAINE			
04:24				REBOUND (DEF) by WHEELER,AARON
04:00				MISSED 3PTR by CLINE,RYAN
03:57	REBOUND (DEF) by SAMUELS,JERMAINE			

Time	VISITORS: Villanova	Score	Margin	HOME: Purdue
03:46	MISSED 3PTR by PASCHALL,ERIC			
03:44	REBOUND (OFF) by COSBY-ROUNDTREE,DHAMIR			
03:43				FOUL (PERSONAL) by CLINE,RYAN
03:43				
03:43	TURNOVER (5SEC) by			
03:24		37-22	H 15	GOOD! LAYUP by HAARMS,MATT
03:24				ASSIST by WHEELER,AARON
02:58	MISSED 3PTR by BOOTH,PHIL			
02:55	REBOUND (OFF) by COSBY-ROUNDTREE,DHAMIR			
02:51	MISSED LAYUP by COSBY-ROUNDTREE,DHAMIR			
02:49				REBOUND (DEF) by TEAM
02:47				SUB OUT: HUNTER JR.,ERIC
02:47				SUB IN: EASTERN,NOJEL
02:47				SUB OUT: WHEELER,AARON
02:47				SUB IN: EIFERT,GRADY
02:47	TIMEOUT 30SEC			
02:20				MISSED 3PTR by EDWARDS,CARSEN
02:17				REBOUND (OFF) by EASTERN,NOJEL
02:15		39-22	H 17	GOOD! LAYUP by EASTERN,NOJEL [PNT]
01:56	TURNOVER (BADPASS) by BOOTH,PHIL			
01:56				STEAL by EIFERT,GRADY
01:47				MISSED 3PTR by HAARMS,MATT
01:43	REBOUND (DEF) by SAMUELS,JERMAINE			
01:33	TURNOVER (BADPASS) by COSBY-ROUNDTREE,DHAMIR			
01:33				STEAL by CLINE,RYAN
01:24		41-22	H 19	GOOD! DUNK by HAARMS,MATT
01:24				ASSIST by EASTERN,NOJEL
00:45	GOOD! JUMPER by PASCHALL,ERIC [PNT]	41-24	H 17	
00:23		43-24	H 19	GOOD! DUNK by HAARMS,MATT
00:23				ASSIST by EASTERN,NOJEL
00:00	TURNOVER (BADPASS) by BOOTH,PHIL			

### Villanova 24, Purdue 43

Points from (This Period)	VIL	PUR
In the Paint	4	14
Off Turns	10	7
2nd Chance	3	10
Fast Break	2	3
Bench	0	6

**Official Box Score**  
**Villanova vs Purdue**  
**Second Half Statistics Only**  
**March 24, 2019 at XL Center - Hartford, Conn.**



**Villanova 37**

No.	Player	S	Pts	FG	3FG	FT	OR	DR	TR	PF	A	TO	Blk	Stl	Min	+/-
02	GILLESPIE, COLLIN		0	0-3	0-2	0-0	0	1	1	2	0	0	0	0	12	-12
04	PASCHALL, ERIC		12	4-11	2-7	2-3	1	2	3	0	1	0	0	0	17	-11
05	BOOTH, PHIL		11	3-7	2-3	3-3	0	1	1	2	2	1	0	1	17	-8
15	BEY, SADDIQ		3	1-4	1-3	0-0	1	0	1	1	0	1	0	0	11	-2
23	SAMUELS, JERMAINE		6	2-4	2-4	0-0	0	0	0	5	1	0	0	1	14	6
03	SLATER, BRANDON		0	0-1	0-1	0-0	0	0	0	0	0	0	0	0	3	1
10	SWIDER, COLE		5	1-2	1-2	2-2	0	1	1	1	0	0	0	1	8	0
21	COSBY-ROUNDTREE, DHAMIF		0	0-0	0-0	0-0	1	1	2	1	0	0	0	0	7	-8
22	HECK, PEYTON		0	0-0	0-0	0-0	0	0	0	0	0	0	0	0	0	1
24	CREMO, JOE		0	0-2	0-2	0-0	1	2	3	0	0	0	0	1	7	-2
34	DELANEY, TIM		0	0-0	0-0	0-0	0	0	0	0	0	0	0	0	1	0
	TEAM						1	0	1	0		0				
	<b>TOTALS</b>		<b>37</b>	<b>11-34</b>	<b>8-24</b>	<b>7-8</b>	<b>5</b>	<b>8</b>	<b>13</b>	<b>12</b>	<b>4</b>	<b>2</b>	<b>0</b>	<b>4</b>	<b>98</b>	

*Shooting By Period*

Period	FG	FG%	3FG	3FG%	FT	FT%
2nd Half	11-34		8-24	33%	7-8	88%
Game	20-58	34.5%	11-38	28.9%	10-11	90.9%

*Last FG Half: VIL -*

**Purdue 44**

No.	Player	S	Pts	FG	3FG	FT	OR	DR	TR	PF	A	TO	Blk	Stl	Min	+/-
03	EDWARDS, CARSEN		25	7-12	4-7	7-7	0	4	4	1	1	3	0	0	19	9
14	CLINE, RYAN		6	2-2	2-2	0-0	1	2	3	0	2	0	0	0	13	10
20	EASTERN, NOJEL		2	1-2	0-0	0-0	0	2	2	1	2	2	0	0	15	16
24	EIFERT, GRADY		5	1-1	1-1	2-2	0	3	3	1	3	0	0	0	18	12
32	HAARMS, MATT		6	2-2	0-0	2-2	0	5	5	1	0	0	1	0	17	12
01	WHEELER, AARON		0	0-0	0-0	0-0	0	0	0	4	0	0	0	0	1	-3
02	HUNTER JR., ERIC		0	0-2	0-2	0-0	0	2	2	0	0	0	0	0	5	-9
12	BOUDREAU, EVAN		0	0-0	0-0	0-0	0	0	0	0	0	0	0	0	1	0
15	LUCE, TOMMY		0	0-0	0-0	0-0	0	0	0	0	0	0	0	0	1	-2
23	KING, KYLE		0	0-0	0-0	0-0	0	0	0	0	0	1	0	0	0	-2
50	WILLIAMS, TREVION		0	0-0	0-0	0-3	0	0	0	0	0	0	0	0	2	-5
55	STEFANOVIC, SASHA		0	0-0	0-0	0-0	0	0	0	0	0	0	0	0	7	-3
	TEAM						1	1	2	0		1				
	<b>TOTALS</b>		<b>44</b>	<b>13-21</b>	<b>7-12</b>	<b>11-14</b>	<b>2</b>	<b>19</b>	<b>21</b>	<b>8</b>	<b>8</b>	<b>7</b>	<b>1</b>	<b>0</b>	<b>98</b>	

*Shooting By Period*

Period	FG	FG%	3FG	3FG%	FT	FT%
2nd Half	13-21	62%	7-12	58%	11-14	79%
Game	29-54	53.7%	16-30	53.3%	13-16	81.3%

*Last FG Half: PUR -*

*Game Notes:*

Officials: Keith Kimble, Lee Cassell, Robert Riley  
 Attendance: 15031

Start Time: 2019-03-24 00:40:16  
 End Time: 2019-03-24 02:39:20  
 Game Duration: 119  
 Neutral Court;

Score	1st	2nd	TOT
VIL	24	37	61
PUR	43	44	87

Points from (This Period)	VIL	PUR
In the Paint	4	12
Off Turns	5	3
2nd Chance	5	2
Fast Break	0	7
Bench	5	0

**Official Play-By-Play**  
**Villanova vs Purdue**  
**Second Half**  
**March 24, 2019 at XL Center - Hartford, Conn.**



**Period 2**

**Starters:**

**Villanova:** 15 BEY,SADDIQ; 23 SAMUELS,JERMAINE; 2 GILLESPIE,COLLIN; 4 PASCHALL,ERIC; 5 BOOTH,PHIL;

**Purdue:** 14 CLINE,RYAN; 20 EASTERN,NOJEL; 24 EIFERT,GRADY; 32 HAARMS,MATT; 3 EDWARDS,CARSEN;

Time	VISITORS: Villanova	Score	Margin	HOME: Purdue
19:37	MISSED 3PTR by SAMUELS,JERMAINE			
19:34				REBOUND (DEF) by CLINE,RYAN
19:17				TURNOVER (BADPASS) by EASTERN,NOJEL
19:17	STEAL by SAMUELS,JERMAINE			
19:06	MISSED 3PTR by BOOTH,PHIL			
19:03				REBOUND (DEF) by HAARMS,MATT
18:58		46-24	H 22	GOOD! 3PTR by EDWARDS,CARSEN [FB]
18:58				ASSIST by EASTERN,NOJEL
18:36	MISSED 3PTR by PASCHALL,ERIC			
18:31	REBOUND (OFF) by BEY,SADDIQ			
18:31	TURNOVER (OTHER) by BEY,SADDIQ			
18:16	FOUL (PERSONAL) by BOOTH,PHIL			
18:15				MISSED 3PTR by EDWARDS,CARSEN
18:11	REBOUND (DEF) by GILLESPIE,COLLIN			
17:58	MISSED JUMPER by BOOTH,PHIL			
17:55				REBOUND (DEF) by HAARMS,MATT
17:49	FOUL (PERSONAL) by BEY,SADDIQ			
17:49	SUB OUT: BEY,SADDIQ			
17:49	SUB IN: COSBY-ROUNDTREE,DHAMIR			
17:41		48-24	H 24	GOOD! LAYUP by EDWARDS,CARSEN
17:19	MISSED JUMPER by GILLESPIE,COLLIN			
17:16				REBOUND (DEF) by TEAM
17:16	SUB OUT: SAMUELS,JERMAINE			
17:16	SUB IN: CREMO,JOE			
17:06		51-24	H 27	GOOD! 3PTR by CLINE,RYAN
17:06				ASSIST by EDWARDS,CARSEN
16:37	FOUL (OFF) by BOOTH,PHIL			
16:37	TURNOVER (OFFENSIVE) by BOOTH,PHIL			
16:30		54-24	H 30	GOOD! 3PTR by EDWARDS,CARSEN
16:30				ASSIST by EASTERN,NOJEL
16:07	MISSED 3PTR by GILLESPIE,COLLIN			
16:04				REBOUND (DEF) by EASTERN,NOJEL
15:59				MISSED 3PTR by EDWARDS,CARSEN
15:56				REBOUND (OFF) by CLINE,RYAN
15:52		56-24	H 32	GOOD! LAYUP by EASTERN,NOJEL [PNT]
15:52				ASSIST by EIFERT,GRADY
15:52	TIMEOUT 30SEC			
15:52	SUB OUT: PASCHALL,ERIC			
15:52	SUB IN: BEY,SADDIQ			
15:38	MISSED 3PTR by BEY,SADDIQ			
15:36	REBOUND (OFF) by COSBY-ROUNDTREE,DHAMIR			
15:33	MISSED JUMPER by BOOTH,PHIL			
15:30				REBOUND (DEF) by CLINE,RYAN
15:09	FOUL (PERSONAL) by GILLESPIE,COLLIN			
15:09				
15:09	SUB OUT: BOOTH,PHIL			
15:09	SUB IN: SWIDER,COLE			
15:09	SUB OUT: BEY,SADDIQ			
15:09	SUB IN: SLATER,BRANDON			
15:09	SUB OUT: CREMO,JOE			
15:09	SUB IN: PASCHALL,ERIC			
14:48				MISSED JUMPER by EASTERN,NOJEL
14:46	REBOUND (DEF) by PASCHALL,ERIC			
14:35	MISSED JUMPER by PASCHALL,ERIC			
14:29				REBOUND (DEF) by EDWARDS,CARSEN
14:19		59-24	H 35	GOOD! 3PTR by CLINE,RYAN
14:19				ASSIST by EIFERT,GRADY
14:04	GOOD! LAYUP by PASCHALL,ERIC [PNT]	59-26	H 33	
14:04				FOUL (PERSONAL) by HAARMS,MATT
14:04	SUB OUT: GILLESPIE,COLLIN			
14:04	SUB IN: BOOTH,PHIL			
14:04	SUB OUT: COSBY-ROUNDTREE,DHAMIR			
14:04	SUB IN: SAMUELS,JERMAINE			
14:04				SUB OUT: EASTERN,NOJEL
14:04				SUB IN: HUNTER JR.,ERIC
14:04	MISSED FT by PASCHALL,ERIC			
14:03				REBOUND (DEF) by EIFERT,GRADY
13:39		61-26	H 35	GOOD! DUNK by HAARMS,MATT
13:39				ASSIST by CLINE,RYAN
13:21	GOOD! 3PTR by SAMUELS,JERMAINE	61-29	H 32	



Time	VISITORS: Villanova	Score	Margin	HOME: Purdue
13:21	ASSIST by BOOTH,PHIL			
13:05				MISSED JUMPER by EDWARDS,CARSEN
13:01	REBOUND (DEF) by SWIDER,COLE			
12:58	GOOD! 3PTR by BOOTH,PHIL	61-32	H 29	
12:28		63-32	H 31	GOOD! LAYUP by EDWARDS,CARSEN
12:28	FOUL (PERSONAL) by SWIDER,COLE			
12:28	SUB OUT: SLATER,BRANDON			
12:28	SUB IN: BEY,SADDIQ			
12:28	SUB OUT: SWIDER,COLE			
12:28	SUB IN: CREMO,JOE			
12:28		64-32	H 32	GOOD! FT by EDWARDS,CARSEN
12:08				SUB OUT: EIFERT,GRADY
12:08				SUB IN: WHEELER,AARON
12:03	GOOD! 3PTR by PASCHALL,ERIC	64-35	H 29	
11:45				MISSED 3PTR by HUNTER JR.,ERIC
11:42	REBOUND (DEF) by CREMO,JOE			
11:34				FOUL (PERSONAL) by WHEELER,AARON
11:34				
11:34				SUB OUT: HAARMS,MATT
11:34				SUB IN: WILLIAMS,TREVION
11:34	SUB OUT: SAMUELS,JERMAINE			
11:34	SUB IN: COSBY-ROUNDTREE,DHAMIR			
11:33	MISSED 3PTR by CREMO,JOE			
11:29	REBOUND (OFF) by TEAM			
11:26				FOUL (PERSONAL) by WHEELER,AARON
11:26	GOOD! FT by PASCHALL,ERIC	64-36	H 28	
11:26	SUB OUT: CREMO,JOE			
11:26	SUB IN: SAMUELS,JERMAINE			
11:26	GOOD! FT by PASCHALL,ERIC	64-37	H 27	
11:21	FOUL (PERSONAL) by SAMUELS,JERMAINE			
11:21				MISSED FT by WILLIAMS,TREVION
11:21				REBOUND (OFF) by TEAM
11:21	SUB OUT: COSBY-ROUNDTREE,DHAMIR			
11:21	SUB IN: CREMO,JOE			
11:21	SUB OUT: SAMUELS,JERMAINE			
11:21	SUB IN: GILLESPIE,COLLIN			
11:21				MISSED FT by WILLIAMS,TREVION
11:20	REBOUND (DEF) by CREMO,JOE			
11:15				FOUL (PERSONAL) by WHEELER,AARON
11:15				SUB OUT: WHEELER,AARON
11:15				SUB IN: EIFERT,GRADY
11:05	MISSED LAYUP by BEY,SADDIQ			
11:03				REBOUND (DEF) by HUNTER JR.,ERIC
10:51	FOUL (PERSONAL) by GILLESPIE,COLLIN			
10:51	SUB OUT: GILLESPIE,COLLIN			
10:51	SUB IN: SAMUELS,JERMAINE			
10:51				MISSED FT by WILLIAMS,TREVION
10:49	REBOUND (DEF) by BOOTH,PHIL			
10:36	MISSED 3PTR by PASCHALL,ERIC			
10:33	REBOUND (OFF) by CREMO,JOE			
10:27	GOOD! 3PTR by BEY,SADDIQ	64-40	H 24	
10:27	ASSIST by SAMUELS,JERMAINE			
09:53				MISSED 3PTR by HUNTER JR.,ERIC
09:51				REBOUND (OFF) by TEAM
09:51				TURNOVER (SHOTCLOCK) by
09:51				SUB OUT: WILLIAMS,TREVION
09:51				SUB IN: HAARMS,MATT
09:51				SUB OUT: HUNTER JR.,ERIC
09:51				SUB IN: EASTERN,NOJEL
09:51				SUB OUT: CLINE,RYAN
09:51				SUB IN: STEFANOVIC,SASHA
09:51	SUB OUT: BOOTH,PHIL			
09:51	SUB IN: COSBY-ROUNDTREE,DHAMIR			
09:40	GOOD! JUMPER by PASCHALL,ERIC	64-42	H 22	
09:16				FOUL (OFF) by EDWARDS,CARSEN
09:16				TURNOVER (OFFENSIVE) by EDWARDS,CARSEN
09:16	SUB OUT: COSBY-ROUNDTREE,DHAMIR			
09:16	SUB IN: BOOTH,PHIL			
08:56	MISSED LAYUP by PASCHALL,ERIC			
08:56				BLOCK by HAARMS,MATT
08:53				REBOUND (DEF) by EDWARDS,CARSEN
08:51	FOUL (PERSONAL) by SAMUELS,JERMAINE			
08:51		65-42	H 23	GOOD! FT by EDWARDS,CARSEN [FB]
08:51		66-42	H 24	GOOD! FT by EDWARDS,CARSEN [FB]
08:33	MISSED 3PTR by CREMO,JOE			
08:28				REBOUND (DEF) by EIFERT,GRADY
08:12				TURNOVER (BADPASS) by EDWARDS,CARSEN
08:12	STEAL by BOOTH,PHIL			
08:06	MISSED 3PTR by PASCHALL,ERIC			
08:02				REBOUND (DEF) by HAARMS,MATT

Time	VISITORS: Villanova	Score	Margin	HOME: Purdue
07:43	FOUL (PERSONAL) by SAMUELS,JERMAINE			
07:43				
07:43	SUB OUT: SAMUELS,JERMAINE			
07:43	SUB IN: SWIDER,COLE			
07:43	SUB OUT: CREMO,JOE			
07:43	SUB IN: COSBY-ROUNDTREE,DHAMIR			
07:43		67-42	H 25	GOOD! FT by EIFERT,GRADY
07:43		68-42	H 26	GOOD! FT by EIFERT,GRADY
07:23	MISSED 3PTR by BEY,SADDIQ			
07:20				REBOUND (DEF) by HAARMS,MATT
07:10				MISSED LAYUP by EDWARDS,CARSEN
07:06	REBOUND (DEF) by PASCHALL,ERIC			
07:01	MISSED 3PTR by PASCHALL,ERIC			
06:57				REBOUND (DEF) by EASTERN,NOJEL
06:36		71-42	H 29	GOOD! 3PTR by EDWARDS,CARSEN
06:13				FOUL (PERSONAL) by EIFERT,GRADY
06:13	SUB OUT: BEY,SADDIQ			
06:13	SUB IN: GILLESPIE,COLLIN			
06:13	SUB OUT: PASCHALL,ERIC			
06:13	SUB IN: SAMUELS,JERMAINE			
06:07	GOOD! 3PTR by BOOTH,PHIL	71-45	H 26	
05:39				MISSED 3PTR by EDWARDS,CARSEN
05:35	REBOUND (DEF) by COSBY-ROUNDTREE,DHAMIR			
05:24	GOOD! JUMPER by BOOTH,PHIL	71-47	H 24	
05:01	FOUL (PERSONAL) by COSBY-ROUNDTREE,DHAMIR			
05:01		72-47	H 25	GOOD! FT by HAARMS,MATT
05:01	SUB OUT: COSBY-ROUNDTREE,DHAMIR			
05:01	SUB IN: PASCHALL,ERIC			
05:01		73-47	H 26	GOOD! FT by HAARMS,MATT
04:42				FOUL (PERSONAL) by EASTERN,NOJEL
04:42	GOOD! FT by BOOTH,PHIL	73-48	H 25	
04:42	GOOD! FT by BOOTH,PHIL	73-49	H 24	
04:42	SUB OUT: SWIDER,COLE			
04:42	SUB IN: BEY,SADDIQ			
04:42	GOOD! FT by BOOTH,PHIL	73-50	H 23	
04:35		75-50	H 25	GOOD! DUNK by HAARMS,MATT [FB/PNT]
04:35				ASSIST by EIFERT,GRADY
04:16	GOOD! 3PTR by PASCHALL,ERIC	75-53	H 22	
03:54		77-53	H 24	GOOD! LAYUP by EDWARDS,CARSEN [PNT]
03:27	GOOD! 3PTR by SAMUELS,JERMAINE	77-56	H 21	
03:27	ASSIST by BOOTH,PHIL			
03:27	TIMEOUT 30SEC			
03:27				SUB OUT: STEFANOVIC,SASHA
03:27				SUB IN: CLINE,RYAN
03:24				TURNOVER (OTHER) by EDWARDS,CARSEN
03:14	MISSED LAYUP by BOOTH,PHIL			
03:11				REBOUND (DEF) by HAARMS,MATT
02:50		80-56	H 24	GOOD! 3PTR by EIFERT,GRADY
02:50				ASSIST by CLINE,RYAN
02:32	MISSED 3PTR by PASCHALL,ERIC			
02:30				REBOUND (DEF) by EDWARDS,CARSEN
02:30	FOUL (PERSONAL) by SAMUELS,JERMAINE			
02:30		81-56	H 25	GOOD! FT by EDWARDS,CARSEN
02:30	SUB OUT: BEY,SADDIQ			
02:30	SUB IN: SWIDER,COLE			
02:30		82-56	H 26	GOOD! FT by EDWARDS,CARSEN
02:17	MISSED 3PTR by SAMUELS,JERMAINE			
02:13				REBOUND (DEF) by EDWARDS,CARSEN
02:01		85-56	H 29	GOOD! 3PTR by EDWARDS,CARSEN
01:44	MISSED 3PTR by GILLESPIE,COLLIN			
01:41				REBOUND (DEF) by EIFERT,GRADY
01:29				TURNOVER (BADPASS) by EASTERN,NOJEL
01:29	STEAL by SWIDER,COLE			
01:24	MISSED 3PTR by SWIDER,COLE			
01:20	REBOUND (OFF) by PASCHALL,ERIC			
01:18	GOOD! 3PTR by SWIDER,COLE	85-59	H 26	
01:18	ASSIST by PASCHALL,ERIC			
00:57	FOUL (PERSONAL) by SAMUELS,JERMAINE			
00:57				SUB OUT: CLINE,RYAN
00:57				SUB IN: HUNTER JR.,ERIC
00:57				SUB OUT: EASTERN,NOJEL
00:57				SUB IN: STEFANOVIC,SASHA
00:57				SUB OUT: EIFERT,GRADY
00:57				SUB IN: WHEELER,AARON
00:57				SUB OUT: HAARMS,MATT
00:57				SUB IN: BOUDREAUX,EVAN
00:57	SUB OUT: BOOTH,PHIL			
00:57	SUB IN: CREMO,JOE			
00:57	SUB OUT: PASCHALL,ERIC			
00:57	SUB IN: SLATER,BRANDON			

Time	VISITORS: Villanova	Score	Margin	HOME: Purdue
00:57	SUB OUT: SAMUELS, JERMAINE			
00:57	SUB IN: DELANEY, TIM			
00:57		86-59	H 27	GOOD! FT by EDWARDS, CARSEN
00:57		87-59	H 28	GOOD! FT by EDWARDS, CARSEN
00:57				SUB OUT: EDWARDS, CARSEN
00:57				SUB IN: LUCE, TOMMY
00:48				FOUL (PERSONAL) by WHEELER, AARON
00:48				SUB OUT: WHEELER, AARON
00:48				SUB IN: KING, KYLE
00:48	GOOD! FT by SWIDER, COLE	87-60	H 27	
00:48	SUB OUT: GILLESPIE, COLLIN			
00:48	SUB IN: HECK, PEYTON			
00:48	GOOD! FT by SWIDER, COLE	87-61	H 26	
00:37				TURNOVER (BADPASS) by KING, KYLE
00:37	STEAL by CREMO, JOE			
00:29	MISSED 3PTR by SLATER, BRANDON			
00:25				REBOUND (DEF) by HUNTER JR., ERIC

**Villanova 61, Purdue 87**

Points from (This Period)	VIL	PUR
In the Paint	4	12
Off Turns	5	3
2nd Chance	5	2
Fast Break	0	7
Bench	5	0

**Official Scoring/Possession Reference Chart**  
**Villanova vs Purdue**  
**Period 1**  
**March 24, 2019 at XL Center - Hartford, Conn.**



**Period 1**

**Starters:**

**Villanova:** 15 BEY,SADDIQ; 23 SAMUELS,JERMAINE; 2 GILLESPIE,COLLIN; 4 PASCHALL,ERIC; 5 BOOTH,PHIL;  
**Purdue:** 14 CLINE,RYAN; 20 EASTERN,NOJEL; 24 EIFERT,GRADY; 32 HAARMS,MATT; 3 EDWARDS,CARSEN;

Time	VISITORS: Villanova	Score	Margin	HOME: Purdue
19:05		2-0	H 2	GOOD! DUNK by HAARMS,MATT
18:35	GOOD! JUMPER by PASCHALL,ERIC	2-2	T	
18:06		4-2	H 2	GOOD! LAYUP by HAARMS,MATT [PNT]
17:46	GOOD! 3PTR by GILLESPIE,COLLIN	4-5	V 1	
17:23		7-5	H 2	GOOD! 3PTR by EDWARDS,CARSEN
16:49		10-5	H 5	GOOD! 3PTR by EDWARDS,CARSEN [FB]
16:21	GOOD! 3PTR by GILLESPIE,COLLIN	10-8	H 2	
15:55		13-8	H 5	GOOD! 3PTR by CLINE,RYAN
15:09		16-8	H 8	GOOD! 3PTR by EDWARDS,CARSEN
14:49	GOOD! LAYUP by SAMUELS,JERMAINE [PNT]	16-10	H 6	
14:37		19-10	H 9	GOOD! 3PTR by EDWARDS,CARSEN
12:35	GOOD! FT by GILLESPIE,COLLIN [FB]	19-11	H 8	
12:35	GOOD! FT by GILLESPIE,COLLIN [FB]	19-12	H 7	
12:10		22-12	H 10	GOOD! 3PTR by WHEELER,AARON
11:23		25-12	H 13	GOOD! 3PTR by STEFANOVIC,SASHA
09:53	GOOD! 3PTR by SAMUELS,JERMAINE	25-15	H 10	
09:24		27-15	H 12	GOOD! DUNK by HAARMS,MATT
08:59	GOOD! JUMPER by BOOTH,PHIL	27-17	H 10	
07:47	GOOD! JUMPER by PASCHALL,ERIC	27-19	H 8	
07:46	GOOD! FT by PASCHALL,ERIC	27-20	H 7	
07:26		30-20	H 10	GOOD! 3PTR by EDWARDS,CARSEN
06:39		31-20	H 11	GOOD! FT by EDWARDS,CARSEN
06:39		32-20	H 12	GOOD! FT by EDWARDS,CARSEN
05:07	GOOD! JUMPER by BOOTH,PHIL	32-22	H 10	
04:50		35-22	H 13	GOOD! 3PTR by CLINE,RYAN
03:24		37-22	H 15	GOOD! LAYUP by HAARMS,MATT
02:15		39-22	H 17	GOOD! LAYUP by EASTERN,NOJEL [PNT]
01:24		41-22	H 19	GOOD! DUNK by HAARMS,MATT
00:45	GOOD! JUMPER by PASCHALL,ERIC [PNT]	41-24	H 17	
00:23		43-24	H 19	GOOD! DUNK by HAARMS,MATT

**Villanova 24, Purdue 43**

**Official Scoring/Possession Reference Chart**  
**Villanova vs Purdue**  
**Period 2**  
**March 24, 2019 at XL Center - Hartford, Conn.**



**Period 2**

**Starters:**

**Villanova:** 15 BEY,SADDIQ; 23 SAMUELS,JERMAINE; 2 GILLESPIE,COLLIN; 4 PASCHALL,ERIC; 5 BOOTH,PHIL;  
**Purdue:** 14 CLINE,RYAN; 20 EASTERN,NOJEL; 24 EIFERT,GRADY; 32 HAARMS,MATT; 3 EDWARDS,CARSEN;

Time	VISITORS: Villanova	Score	Margin	HOME: Purdue
18:58		46-24	H 22	GOOD! 3PTR by EDWARDS,CARSEN [FB]
17:41		48-24	H 24	GOOD! LAYUP by EDWARDS,CARSEN
17:06		51-24	H 27	GOOD! 3PTR by CLINE,RYAN
16:30		54-24	H 30	GOOD! 3PTR by EDWARDS,CARSEN
15:52		56-24	H 32	GOOD! LAYUP by EASTERN,NOJEL [PNT]
14:19		59-24	H 35	GOOD! 3PTR by CLINE,RYAN
14:04	GOOD! LAYUP by PASCHALL,ERIC [PNT]	59-26	H 33	
13:39		61-26	H 35	GOOD! DUNK by HAARMS,MATT
13:21	GOOD! 3PTR by SAMUELS,JERMAINE	61-29	H 32	
12:58	GOOD! 3PTR by BOOTH,PHIL	61-32	H 29	
12:28		63-32	H 31	GOOD! LAYUP by EDWARDS,CARSEN
12:28		64-32	H 32	GOOD! FT by EDWARDS,CARSEN
12:03	GOOD! 3PTR by PASCHALL,ERIC	64-35	H 29	
11:26	GOOD! FT by PASCHALL,ERIC	64-36	H 28	
11:26	GOOD! FT by PASCHALL,ERIC	64-37	H 27	
10:27	GOOD! 3PTR by BEY,SADDIQ	64-40	H 24	
09:40	GOOD! JUMPER by PASCHALL,ERIC	64-42	H 22	
08:51		65-42	H 23	GOOD! FT by EDWARDS,CARSEN [FB]
08:51		66-42	H 24	GOOD! FT by EDWARDS,CARSEN [FB]
07:43		67-42	H 25	GOOD! FT by EIFERT,GRADY
07:43		68-42	H 26	GOOD! FT by EIFERT,GRADY
06:36		71-42	H 29	GOOD! 3PTR by EDWARDS,CARSEN
06:07	GOOD! 3PTR by BOOTH,PHIL	71-45	H 26	
05:24	GOOD! JUMPER by BOOTH,PHIL	71-47	H 24	
05:01		72-47	H 25	GOOD! FT by HAARMS,MATT
05:01		73-47	H 26	GOOD! FT by HAARMS,MATT
04:42	GOOD! FT by BOOTH,PHIL	73-48	H 25	
04:42	GOOD! FT by BOOTH,PHIL	73-49	H 24	
04:42	GOOD! FT by BOOTH,PHIL	73-50	H 23	
04:35		75-50	H 25	GOOD! DUNK by HAARMS,MATT [FB/PNT]
04:16	GOOD! 3PTR by PASCHALL,ERIC	75-53	H 22	
03:54		77-53	H 24	GOOD! LAYUP by EDWARDS,CARSEN [PNT]
03:27	GOOD! 3PTR by SAMUELS,JERMAINE	77-56	H 21	
02:50		80-56	H 24	GOOD! 3PTR by EIFERT,GRADY
02:30		81-56	H 25	GOOD! FT by EDWARDS,CARSEN
02:30		82-56	H 26	GOOD! FT by EDWARDS,CARSEN
02:01		85-56	H 29	GOOD! 3PTR by EDWARDS,CARSEN
01:18	GOOD! 3PTR by SWIDER,COLE	85-59	H 26	
00:57		86-59	H 27	GOOD! FT by EDWARDS,CARSEN
00:57		87-59	H 28	GOOD! FT by EDWARDS,CARSEN
00:48	GOOD! FT by SWIDER,COLE	87-60	H 27	
00:48	GOOD! FT by SWIDER,COLE	87-61	H 26	

**Villanova 61, Purdue 87**

**Official Substitutions Log**  
**Villanova vs Purdue**  
**Period 1**  
**March 24, 2019 at XL Center - Hartford, Conn.**



VISITORS: Villanova	Time	Score	HOME: Purdue
15 BEY, SADDIQ			14 CLINE, RYAN
23 SAMUELS, JERMAINE			20 EASTERN, NOJEL
2 GILLESPIE, COLLIN			24 EIFERT, GRADY
4 PASCHALL, ERIC			32 HAARMS, MATT
5 BOOTH, PHIL			3 EDWARDS, CARSEN
	14:02	10-19	SUB OUT: EASTERN, NOJEL
	14:02		SUB IN: WILLIAMS, TREVION
	14:02		SUB OUT: HAARMS, MATT
	14:02		SUB IN: HUNTER JR., ERIC
	12:52	10-19	SUB OUT: EIFERT, GRADY
	12:52		SUB IN: WHEELER, AARON
SUB OUT: 23 SAMUELS, JERMAINE	12:52		
SUB IN: 21 COSBY-ROUNDTREE, DHAMIR	12:52		
	11:35	12-22	SUB OUT: WILLIAMS, TREVION
	11:35		SUB IN: HAARMS, MATT
	11:35		SUB OUT: CLINE, RYAN
	11:35		SUB IN: STEFANOVIC, SASHA
SUB OUT: 15 BEY, SADDIQ	11:35		
SUB IN: 23 SAMUELS, JERMAINE	11:35		
	10:20	12-25	SUB OUT: HUNTER JR., ERIC
	10:20		SUB IN: EASTERN, NOJEL
SUB OUT: 2 GILLESPIE, COLLIN	10:20		
SUB IN: 15 BEY, SADDIQ	10:20		
	09:36	15-25	SUB OUT: WHEELER, AARON
	09:36		SUB IN: EIFERT, GRADY
	09:36		SUB OUT: STEFANOVIC, SASHA
	09:36		SUB IN: CLINE, RYAN
	08:38	17-27	SUB OUT: HAARMS, MATT
	08:38		SUB IN: WILLIAMS, TREVION
SUB OUT: 4 PASCHALL, ERIC	08:38		
SUB IN: 2 GILLESPIE, COLLIN	08:38		
SUB OUT: 21 COSBY-ROUNDTREE, DHAMIR	08:03	17-27	
SUB IN: 4 PASCHALL, ERIC	08:03		
	06:39	20-31	SUB OUT: WILLIAMS, TREVION
	06:39		SUB IN: HAARMS, MATT
	06:39		SUB OUT: EASTERN, NOJEL
	06:39		SUB IN: HUNTER JR., ERIC
	05:32	20-32	SUB OUT: EIFERT, GRADY
	05:32		SUB IN: WHEELER, AARON
SUB OUT: 2 GILLESPIE, COLLIN	05:32		
SUB IN: 21 COSBY-ROUNDTREE, DHAMIR	05:32		
	02:47	22-37	SUB OUT: HUNTER JR., ERIC
	02:47		SUB IN: EASTERN, NOJEL
	02:47		SUB OUT: WHEELER, AARON
	02:47		SUB IN: EIFERT, GRADY

**Villanova 24, Purdue 43**

**Official Substitutions Log**  
**Villanova vs Purdue**  
**Period 2**  
**March 24, 2019 at XL Center - Hartford, Conn.**



VISITORS: Villanova	Time	Score	HOME: Purdue
15 BEY,SADDIQ			14 CLINE,RYAN
23 SAMUELS,JERMAINE			20 EASTERN,NOJEL
2 GILLESPIE,COLLIN			24 EIFERT,GRADY
4 PASCHALL,ERIC			32 HAARMS,MATT
5 BOOTH,PHIL			3 EDWARDS,CARSEN
SUB OUT: 15 BEY,SADDIQ	17:49	24-46	
SUB IN: 21 COSBY-ROUNDTREE,DHAMIR	17:49		
SUB OUT: 23 SAMUELS,JERMAINE	17:16	24-48	
SUB IN: 24 CREMO,JOE	17:16		
SUB OUT: 4 PASCHALL,ERIC	15:52	24-56	
SUB IN: 15 BEY,SADDIQ	15:52		
SUB OUT: 5 BOOTH,PHIL	15:09	24-56	
SUB IN: 10 SWIDER,COLE	15:09		
SUB OUT: 15 BEY,SADDIQ	15:09		
SUB IN: 3 SLATER,BRANDON	15:09		
SUB OUT: 24 CREMO,JOE	15:09		
SUB IN: 4 PASCHALL,ERIC	15:09		
SUB OUT: 2 GILLESPIE,COLLIN	14:04	26-59	
SUB IN: 5 BOOTH,PHIL	14:04		
SUB OUT: 21 COSBY-ROUNDTREE,DHAMIR	14:04		
SUB IN: 23 SAMUELS,JERMAINE	14:04		
	14:04		SUB OUT: EASTERN,NOJEL
	14:04		SUB IN: HUNTER JR.,ERIC
SUB OUT: 3 SLATER,BRANDON	12:28	32-63	
SUB IN: 15 BEY,SADDIQ	12:28		
SUB OUT: 10 SWIDER,COLE	12:28		
SUB IN: 24 CREMO,JOE	12:28		
	12:08	32-64	SUB OUT: EIFERT,GRADY
	12:08		SUB IN: WHEELER,AARON
	11:34	35-64	SUB OUT: HAARMS,MATT
	11:34		SUB IN: WILLIAMS,TREVION
SUB OUT: 23 SAMUELS,JERMAINE	11:34		
SUB IN: 21 COSBY-ROUNDTREE,DHAMIR	11:34		
SUB OUT: 24 CREMO,JOE	11:26	36-64	
SUB IN: 23 SAMUELS,JERMAINE	11:26		
SUB OUT: 21 COSBY-ROUNDTREE,DHAMIR	11:21	37-64	
SUB IN: 24 CREMO,JOE	11:21		
SUB OUT: 23 SAMUELS,JERMAINE	11:21		
SUB IN: 2 GILLESPIE,COLLIN	11:21		
	11:15	37-64	SUB OUT: WHEELER,AARON
	11:15		SUB IN: EIFERT,GRADY
SUB OUT: 2 GILLESPIE,COLLIN	10:51	37-64	
SUB IN: 23 SAMUELS,JERMAINE	10:51		
	09:51	40-64	SUB OUT: WILLIAMS,TREVION
	09:51		SUB IN: HAARMS,MATT
	09:51		SUB OUT: HUNTER JR.,ERIC
	09:51		SUB IN: EASTERN,NOJEL
	09:51		SUB OUT: CLINE,RYAN
	09:51		SUB IN: STEFANOVIC,SASHA
SUB OUT: 5 BOOTH,PHIL	09:51		
SUB IN: 21 COSBY-ROUNDTREE,DHAMIR	09:51		
SUB OUT: 21 COSBY-ROUNDTREE,DHAMIR	09:16	42-64	
SUB IN: 5 BOOTH,PHIL	09:16		
SUB OUT: 23 SAMUELS,JERMAINE	07:43	42-66	
SUB IN: 10 SWIDER,COLE	07:43		
SUB OUT: 24 CREMO,JOE	07:43		
SUB IN: 21 COSBY-ROUNDTREE,DHAMIR	07:43		
SUB OUT: 15 BEY,SADDIQ	06:13	42-71	
SUB IN: 2 GILLESPIE,COLLIN	06:13		
SUB OUT: 4 PASCHALL,ERIC	06:13		
SUB IN: 23 SAMUELS,JERMAINE	06:13		
SUB OUT: 21 COSBY-ROUNDTREE,DHAMIR	05:01	47-72	
SUB IN: 4 PASCHALL,ERIC	05:01		
SUB OUT: 10 SWIDER,COLE	04:42	49-73	
SUB IN: 15 BEY,SADDIQ	04:42		
	03:27	56-77	SUB OUT: STEFANOVIC,SASHA
	03:27		SUB IN: CLINE,RYAN
SUB OUT: 15 BEY,SADDIQ	02:30	56-81	
SUB IN: 10 SWIDER,COLE	02:30		
	00:57	59-85	SUB OUT: CLINE,RYAN
	00:57		SUB IN: HUNTER JR.,ERIC
	00:57		SUB OUT: EASTERN,NOJEL
	00:57		SUB IN: STEFANOVIC,SASHA
	00:57		SUB OUT: EIFERT,GRADY
	00:57		SUB IN: WHEELER,AARON

VISITORS: Villanova	Time	Score	HOME: Purdue
	00:57		SUB OUT: HAARMS,MATT
	00:57		SUB IN: BOUDREAU, EVAN
SUB OUT: 5 BOOTH,PHIL	00:57		
SUB IN: 24 CREMO,JOE	00:57		
SUB OUT: 4 PASCHALL,ERIC	00:57		
SUB IN: 3 SLATER,BRANDON	00:57		
SUB OUT: 23 SAMUELS,JERMAINE	00:57		
SUB IN: 34 DELANEY,TIM	00:57		
	00:57		SUB OUT: EDWARDS,CARSEN
	00:57		SUB IN: LUCE,TOMMY
	00:48	59-87	SUB OUT: WHEELER,AARON
	00:48		SUB IN: KING,KYLE
SUB OUT: 2 GILLESPIE,COLLIN	00:48		
SUB IN: 22 HECK,PEYTON	00:48		

**Villanova 61, Purdue 87**



**Official Shot Chart**  
**Villanova vs Purdue**  
**PERIOD 1 Shots**  
 March 24, 2019 at XL Center - Hartford, Conn.

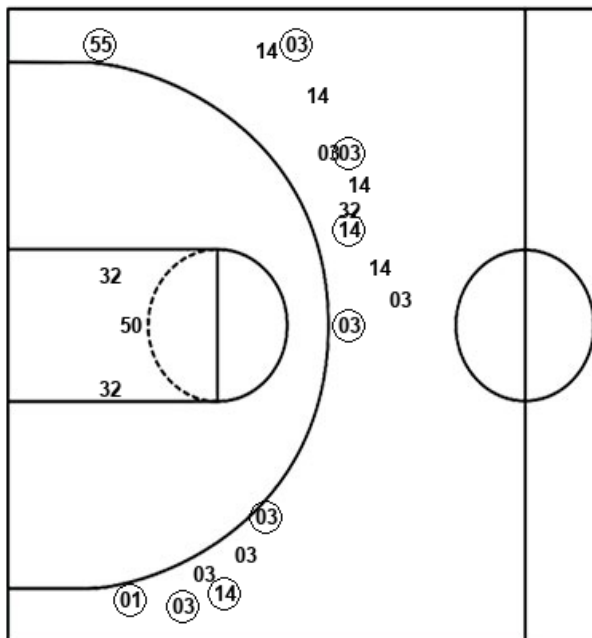


**Purdue**

**Villanova**

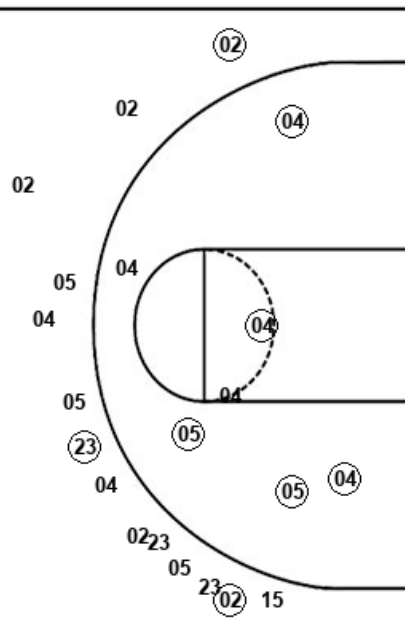
Layups  
 32 20 50 50 14  
 32 32 20

Dunks  
 32 32 32 32



Layups  
 23 05 21

Dunks



PUR : Period 1	Made	Att	Pct
Layups	3	8	37.5
Dunks	4	4	100.0
2PT Field Goals	7	15	46.7
3PT Field Goals	9	18	50.0
<b>Total Field Goals</b>	<b>16</b>	<b>33</b>	<b>48.5</b>

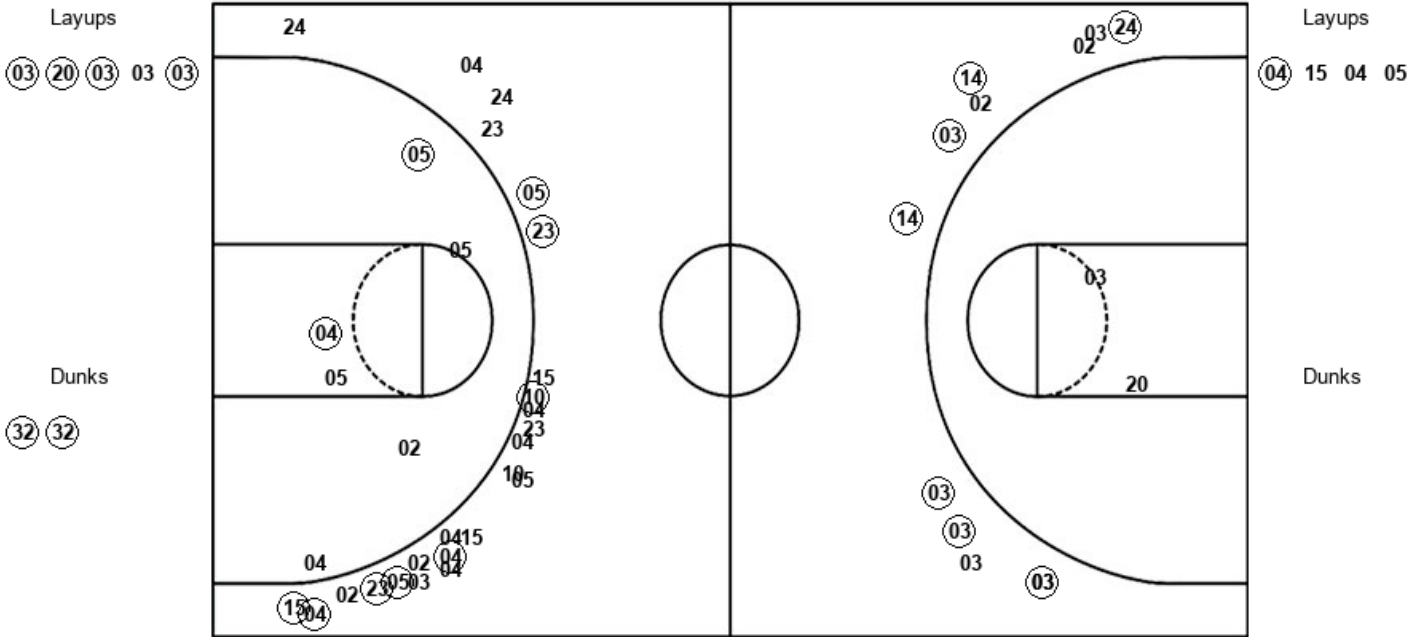
VIL : Period 1	Made	Att	Pct
Layups	1	3	33.3
Dunks	0	0	0
2PT Field Goals	6	10	60.0
3PT Field Goals	3	14	21.4
<b>Total Field Goals</b>	<b>9</b>	<b>24</b>	<b>37.5</b>

**Official Shot Chart**  
**Villanova vs Purdue**  
**PERIOD 2 Shots**  
 March 24, 2019 at XL Center - Hartford, Conn.



**Purdue**

**Villanova**



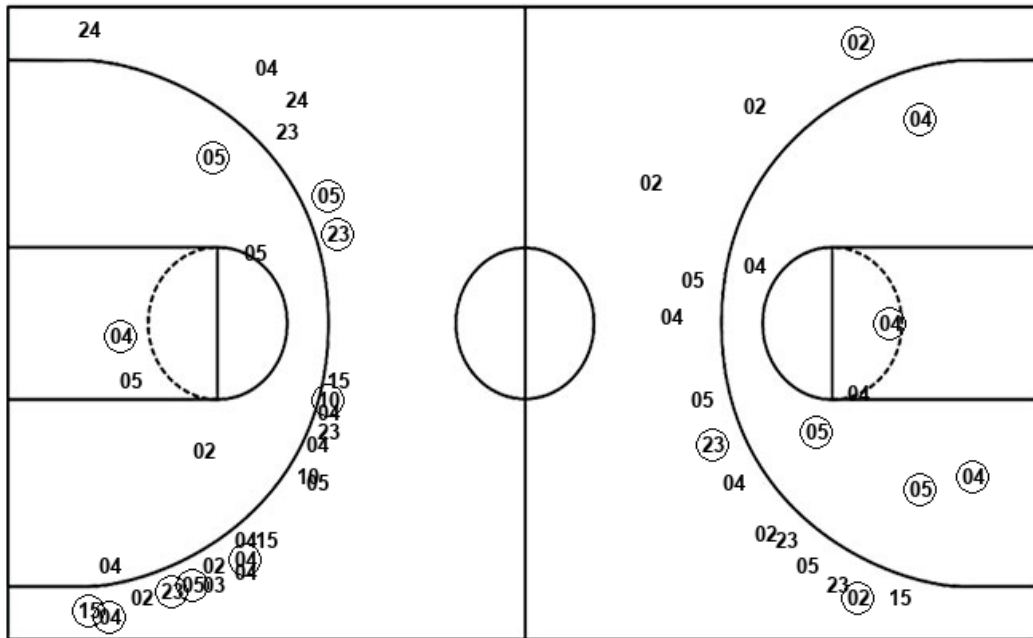
PUR : Period 2	Made	Att	Pct
Layups	4	5	80.0
Dunks	2	2	100.0
2PT Field Goals	6	9	66.7
3PT Field Goals	7	12	58.3
<b>Total Field Goals</b>	<b>13</b>	<b>21</b>	<b>61.9</b>

VIL : Period 2	Made	Att	Pct
Layups	1	4	25.0
Dunks	0	0	0
2PT Field Goals	3	10	30.0
3PT Field Goals	8	24	33.3
<b>Total Field Goals</b>	<b>11</b>	<b>34</b>	<b>32.4</b>

**Official Shot Chart**  
**Villanova vs Purdue**  
**Villanova Team Shots**  
 March 24, 2019 at XL Center - Hartford, Conn.



Layups



Layups

(23) 05 21 (04) 15  
 04 05

Dunks

Dunks

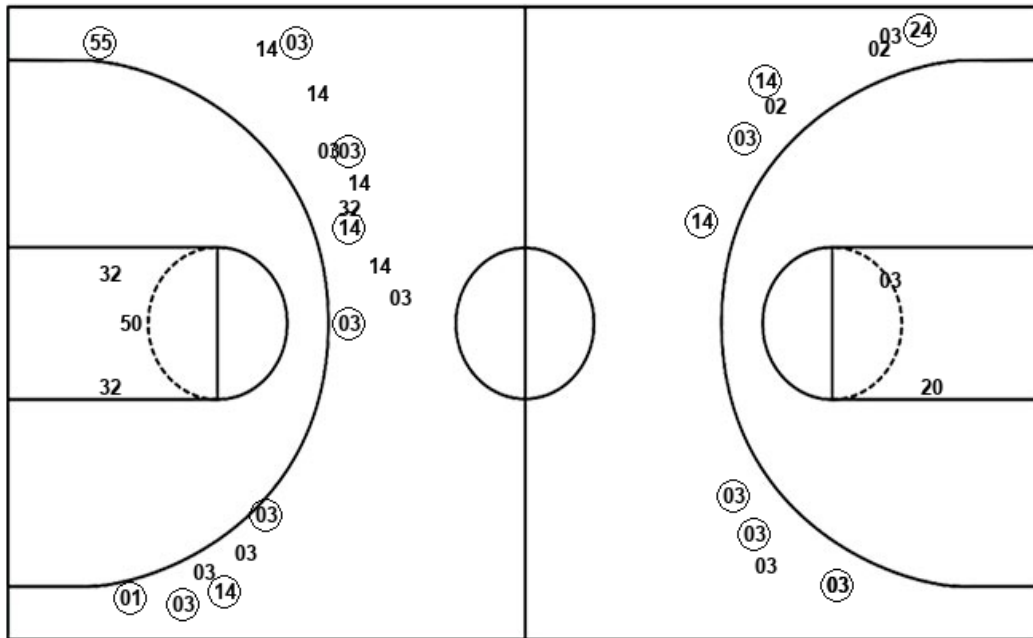
VIL : Period 1	Made	Att	Pct
Layups	1	3	33.3
Dunks	0	0	0
2PT Field Goals	6	10	60.0
3PT Field Goals	3	14	21.4
<b>Total Field Goals</b>	<b>9</b>	<b>24</b>	<b>37.5</b>

VIL : Period 2	Made	Att	Pct
Layups	1	4	25.0
Dunks	0	0	0
2PT Field Goals	3	10	30.0
3PT Field Goals	8	24	33.3
<b>Total Field Goals</b>	<b>11</b>	<b>34</b>	<b>32.4</b>

**Official Shot Chart**  
**Villanova vs Purdue**  
**Purdue Team Shots**  
 March 24, 2019 at XL Center - Hartford, Conn.



Layups



Layups

(32) 20 50 50 14  
 32 (32) (20) (03) (20)  
 (03) 03 (03)

Dunks

Dunks

(32) (32) (32) (32) (32)  
 (32)

PUR : Period 1	Made	Att	Pct
Layups	3	8	37.5
Dunks	4	4	100.0
2PT Field Goals	7	15	46.7
3PT Field Goals	9	18	50.0
<b>Total Field Goals</b>	<b>16</b>	<b>33</b>	<b>48.5</b>

PUR : Period 2	Made	Att	Pct
Layups	4	5	80.0
Dunks	2	2	100.0
2PT Field Goals	6	9	66.7
3PT Field Goals	7	12	58.3
<b>Total Field Goals</b>	<b>13</b>	<b>21</b>	<b>61.9</b>