

CURRENT SCORE



Purdue

56



Maryland

70

February 12, 2019 • XFINITY Center - College Park, Md.

STATISTICS

Official Box Score
Purdue vs Maryland
Game Totals at 00:00 (2nd Period)
February 12, 2019 at XFINITY Center - College Park, Md.

Purdue 56

No.	Player	S	Pts	FG	3FG	FT	OR	DR	TR	PF	A	TO	Blk	Stl	Min	+/-
03	Edwards, Carsen		24	8-27	3-13	5-8	3	6	9	0	0	2	0	2	37	-13
14	Cline, Ryan		9	3-12	3-8	0-0	0	3	3	0	0	1	1	1	36	-12
20	Eastern, Nojel		4	2-6	0-0	0-0	5	3	8	2	1	0	0	0	33	-12
24	Eifert, Grady		2	1-4	0-3	0-0	0	4	4	2	0	0	0	1	24	-7
50	Williams, Trevion		6	3-4	0-0	0-0	2	1	3	4	0	0	0	0	10	-6
01	Wheeler, Aaron		3	1-7	1-6	0-0	0	0	0	0	0	0	0	1	16	-7
02	Hunter Jr., Eric		0	0-1	0-1	0-0	0	0	0	1	2	0	0	0	8	-5
12	Boudreaux, Evan		2	1-2	0-0	0-0	0	0	0	2	1	0	1	0	7	6
32	Haarms, Matt		6	1-6	0-1	4-6	3	5	8	5	1	0	1	0	22	-11
55	Stefanovic, Sasha		0	0-2	0-1	0-0	0	1	1	1	0	0	0	1	7	-3
	Team						4	1	5	0		1				
TOTALS			56	20-71	7-33	9-14	17	24	41	17	5	4	3	6	200	

Shooting By Period

Period	FG	FG%	3FG	3FG%	FT	FT%
1st Half	14-35	40%	6-17	35%	4-6	67%
2nd Half	6-36	17%	1-16	06%	5-8	63%
Game	20-71	28.2%	7-33	21.2%	9-14	64.3%

Last FG: 2nd-04:15
 Biggest Run: 6-0
 Largest lead: By 11 at 1-03:28
 Technical Fouls: None.

Maryland 70

No.	Player	S	Pts	FG	3FG	FT	OR	DR	TR	PF	A	TO	Blk	Stl	Min	+/-
01	Cowan, Anthony		12	4-9	2-7	2-3	0	4	4	2	6	6	1	1	38	19
05	Ayala, Eric		15	5-9	3-7	2-3	0	5	5	0	1	2	2	0	28	3
11	Morsell, Darryl		4	2-6	0-3	0-0	0	3	3	2	3	0	2	1	32	19
23	Fernando, Bruno		12	4-4	0-0	4-7	2	10	12	4	4	2	0	0	34	12
25	Smith, Jalen		16	7-15	0-4	2-2	3	1	4	1	1	1	2	0	35	13
00	Tomaic, Joshua		0	0-0	0-0	0-0	0	0	0	0	0	0	0	0	1	0
02	Wiggins, Aaron		11	4-6	3-5	0-0	0	3	3	1	1	0	0	1	16	6
10	Smith Jr., Serrel		0	0-2	0-1	0-0	0	1	1	0	0	0	0	0	6	-3
14	Lindo Jr., Ricky		0	0-1	0-0	0-0	0	2	2	3	1	0	1	0	10	1
	Team						0	7	7	0		0				
TOTALS			70	26-52	8-27	10-15	5	36	41	13	17	11	8	3	200	

Shooting By Period

Period	FG	FG%	3FG	3FG%	FT	FT%
1st Half	11-27	41%	5-15	33%	3-5	60%
2nd Half	15-25	60%	3-12	25%	7-10	70%
Game	26-52	50.0%	8-27	29.6%	10-15	66.7%

Last FG: 2nd-00:28
 Biggest Run: 8-0
 Largest lead: By 14 at 2-00:28
 Technical Fouls: None.

Game Notes:

Officials: Lamont Simpson, Brian Dorsey, Rob Kueneman
 Attendance: Not Counted Yet

Start Time: 11:30 PM
 Conference Game;

Score	1st	2nd	TOT
PUR	38	18	56
UMD	30	40	70

PUR led for 25:52. UMD led for 9:52.
 Game was tied for 4:16.
 Times tied: 4 Lead Changes: 1

Points from	PUR	UMD
In the Paint	20	36
Off Turns	14	4
2nd Chance	11	7
Fast Break	16	10
Bench	11	11

Official Box Score
Purdue vs Maryland
First Half Statistics Only
February 12, 2019 at XFINITY Center - College Park, Md.

Purdue 38

No.	Player	S	Pts	FG	3FG	FT	OR	DR	TR	PF	A	TO	Blk	Stl	Min	+/-
03	Edwards, Carsen		17	6-14	2-8	3-4	0	4	4	0	0	1	0	2	18	7
14	Cline, Ryan		9	3-5	3-3	0-0	0	2	2	0	0	1	1	0	19	8
20	Eastern, Nojel		2	1-3	0-0	0-0	1	2	3	1	0	0	0	0	15	11
24	Eifert, Grady		2	1-3	0-2	0-0	0	3	3	0	0	0	0	0	12	4
50	Williams, Trevion		2	1-2	0-0	0-0	0	0	0	2	0	0	0	0	3	3
01	Wheeler, Aaron		3	1-3	1-3	0-0	0	0	0	0	0	0	0	1	8	4
02	Hunter Jr., Eric		0	0-0	0-0	0-0	0	0	0	0	2	0	0	0	5	-3
12	Boudreaux, Evan		2	1-2	0-0	0-0	0	0	0	2	1	0	1	0	7	6
32	Haarms, Matt		1	0-2	0-1	1-2	2	4	6	2	1	0	1	0	10	-1
55	Stefanovic, Sasha		0	0-1	0-0	0-0	0	1	1	0	0	0	0	1	3	1
	Team						1	1	2	0		0				
TOTALS			38	14-35	6-17	4-6	4	17	21	7	4	2	3	4	100	

Shooting By Period

Period	FG	FG%	3FG	3FG%	FT	FT%
1st Half	14-35	40%	6-17	35%	4-6	67%
Game	20-71	28.2%	7-33	21.2%	9-14	64.3%

Last FG Half: PUR 2nd-04:15

Maryland 30

No.	Player	S	Pts	FG	3FG	FT	OR	DR	TR	PF	A	TO	Blk	Stl	Min	+/-
01	Cowan, Anthony		8	3-4	2-3	0-0	0	2	2	1	1	4	0	0	18	-3
05	Ayala, Eric		9	3-6	1-4	2-3	0	4	4	0	1	1	2	0	16	-11
11	Morsell, Darryl		2	1-4	0-2	0-0	0	2	2	1	3	0	0	1	16	-1
23	Fernando, Bruno		3	1-1	0-0	1-2	0	4	4	2	3	1	0	0	19	-8
25	Smith, Jalen		2	1-7	0-3	0-0	1	0	1	0	0	1	0	0	16	-7
00	Tomaic, Joshua		0	0-0	0-0	0-0	0	0	0	0	0	0	0	0	1	0
02	Wiggins, Aaron		6	2-3	2-3	0-0	0	2	2	0	0	0	0	1	7	-6
10	Smith Jr., Serrel		0	0-1	0-0	0-0	0	1	1	0	0	0	0	0	4	-3
14	Lindo Jr., Ricky		0	0-1	0-0	0-0	0	1	1	2	1	0	1	0	5	-1
	Team						0	2	2	0		0				
TOTALS			30	11-27	5-15	3-5	1	18	19	6	9	7	3	2	100	

Shooting By Period

Period	FG	FG%	3FG	3FG%	FT	FT%
1st Half	11-27	41%	5-15	33%	3-5	60%
Game	26-52	50.0%	8-27	29.6%	10-15	66.7%

Last FG Half: UMD 2nd-00:28

Game Notes:

Officials: Lamont Simpson, Brian Dorsey, Rob Kueneman
Attendance: Not Counted Yet

Start Time: 11:30 PM
Conference Game:

Score	1st	2nd	TOT
PUR	38	18	56
UMD	30	40	70

Points from (This Period)	PUR	UMD
In the Paint	10	12
Off Turns	8	2
2nd Chance	5	0
Fast Break	14	6
Bench	6	6

**Official Play-By-Play
Purdue vs Maryland
First Half
February 12, 2019 at XFINITY Center - College Park, Md.**

Period 1

Starters:

Purdue: 14 CLINE, RYAN; 20 EASTERN, NOJEL; 24 EIFERT, GRADY; 50 WILLIAMS, TREVION; 3 EDWARDS, CARSEN;

Maryland: 11 MORSELL, DARRYL; 23 FERNANDO, BRUNO; 25 SMITH, JALEN; 1 COWAN, ANTHONY; 5 AYALA, ERIC;

Time	VISITORS: Purdue	Score	Margin	HOME: Maryland
19:40				MISSED 3PTR by SMITH, JALEN
19:36	REBOUND (DEF) by EASTERN, NOJEL			
19:21	GOOD! 3PTR by EDWARDS, CARSEN	0-3	V 3	
18:57	FOUL (PERSONAL) by WILLIAMS, TREVION			
18:57	SUB OUT: WILLIAMS, TREVION			
18:57	SUB IN: HAARMS, MATT			
18:50				MISSED 3PTR by AYALA, ERIC
18:47	REBOUND (DEF) by EIFERT, GRADY			
18:30	MISSED 3PTR by EIFERT, GRADY			
18:27				REBOUND (DEF) by MORSELL, DARRYL
18:16				MISSED LAYUP by SMITH, JALEN
18:16	REBOUND (DEF) by EDWARDS, CARSEN			
18:16	BLOCK by HAARMS, MATT			
18:07	MISSED 3PTR by EDWARDS, CARSEN			
18:02				REBOUND (DEF) by MORSELL, DARRYL
17:44				MISSED LAYUP by SMITH, JALEN
17:31				REBOUND (OFF) by SMITH, JALEN
17:31				MISSED LAYUP by SMITH, JALEN
17:30	REBOUND (DEF) by HAARMS, MATT			
17:29	GOOD! LAYUP by EDWARDS, CARSEN [FB]	0-5	V 5	
17:13				MISSED 3PTR by SMITH, JALEN
17:09	REBOUND (DEF) by EDWARDS, CARSEN			
16:59	MISSED 3PTR by HAARMS, MATT			
16:57				REBOUND (DEF) by TEAM
16:31				MISSED 3PTR by MORSELL, DARRYL
16:26	REBOUND (DEF) by EIFERT, GRADY			
16:21	MISSED LAYUP by EASTERN, NOJEL			
16:21				BLOCK by AYALA, ERIC
16:14				REBOUND (DEF) by AYALA, ERIC
15:54				TURNOVER (BADPASS) by COWAN, ANTHONY
15:54				
15:54	SUB OUT: EASTERN, NOJEL			
15:54	SUB IN: HUNTER JR., ERIC			
15:23	MISSED LAYUP by EDWARDS, CARSEN			
15:20				REBOUND (DEF) by COWAN, ANTHONY
15:16		2-5	V 3	GOOD! DUNK by SMITH, JALEN [FB]
15:16				ASSIST by AYALA, ERIC
14:41	MISSED 3PTR by EIFERT, GRADY			
14:38	REBOUND (OFF) by HAARMS, MATT			
14:36	GOOD! 3PTR by EDWARDS, CARSEN	2-8	V 6	
14:36	ASSIST by HAARMS, MATT			
14:14		5-8	V 3	GOOD! 3PTR by COWAN, ANTHONY
14:14				ASSIST by MORSELL, DARRYL
13:45	MISSED JUMPER by EDWARDS, CARSEN			
13:45				BLOCK by AYALA, ERIC
13:43				REBOUND (DEF) by FERNANDO, BRUNO
13:41		7-8	V 1	GOOD! LAYUP by AYALA, ERIC [FB]
13:41				ASSIST by FERNANDO, BRUNO
13:41	SUB OUT: HUNTER JR., ERIC			
13:41	SUB IN: WHEELER, AARON			
13:41	SUB OUT: EIFERT, GRADY			
13:41	SUB IN: EASTERN, NOJEL			
13:41	SUB OUT: HAARMS, MATT			
13:41	SUB IN: BOUDREAUX, EVAN			
13:23	MISSED 3PTR by WHEELER, AARON			
13:20				REBOUND (DEF) by AYALA, ERIC
13:19				MISSED LAYUP by MORSELL, DARRYL
13:19	REBOUND (DEF) by CLINE, RYAN			
13:19	BLOCK by CLINE, RYAN			
13:05	GOOD! JUMPER by BOUDREAUX, EVAN	7-10	V 3	
12:45		10-10	T	GOOD! 3PTR by AYALA, ERIC
12:45				ASSIST by COWAN, ANTHONY
12:23	GOOD! 3PTR by CLINE, RYAN	10-13	V 3	
12:23	ASSIST by BOUDREAUX, EVAN			
12:08	FOUL (PERSONAL) by BOUDREAUX, EVAN			
12:08				SUB OUT: AYALA, ERIC
12:08				SUB IN: LINDO JR., RICKY
12:08				SUB OUT: MORSELL, DARRYL
12:08				SUB IN: SMITH JR., SERREL
12:08				SUB OUT: FERNANDO, BRUNO
12:08				SUB IN: TOMAIC, JOSHUA
12:08				SUB OUT: SMITH, JALEN
12:08				SUB IN: WIGGINS, AARON
12:08	SUB OUT: CLINE, RYAN			
12:08	SUB IN: STEFANOVIC, SASHA			
11:48				MISSED JUMPER by SMITH JR., SERREL

Time	VISITORS: Purdue	Score	Margin	HOME: Maryland
11:48	BLOCK by BOUDREAU, EVAN			
11:46	REBOUND (DEF) by STEFANOVIC, SASHA			
11:44	MISSED LAYUP by BOUDREAU, EVAN			
11:44				BLOCK by LINDO JR., RICKY
11:43	REBOUND (OFF) by TEAM			
11:42				
11:35	MISSED 3PTR by EDWARDS, CARSEN			
11:31				REBOUND (DEF) by COWAN, ANTHONY
11:17				TURNOVER (BADPASS) by COWAN, ANTHONY
11:17				SUB OUT: TOMAIC, JOSHUA
11:17				SUB IN: FERNANDO, BRUNO
11:17	SUB OUT: EDWARDS, CARSEN			
11:17	SUB IN: CLINE, RYAN			
11:17	SUB OUT: BOUDREAU, EVAN			
11:17	SUB IN: WILLIAMS, TREVION			
11:03	MISSED JUMPER by WILLIAMS, TREVION			
10:56	REBOUND (OFF) by EASTERN, NOJEL			
10:56	GOOD! LAYUP by EASTERN, NOJEL	10-15	V 5	
10:40		13-15	V 2	GOOD! 3PTR by WIGGINS, AARON
10:19	GOOD! JUMPER by WILLIAMS, TREVION [PNT]	13-17	V 4	
10:06				TURNOVER (BADPASS) by COWAN, ANTHONY
10:06	STEAL by STEFANOVIC, SASHA			
10:02				SUB OUT: COWAN, ANTHONY
10:02				SUB IN: AYALA, ERIC
10:02	SUB OUT: WHEELER, AARON			
10:02	SUB IN: EIFERT, GRADY			
09:56	MISSED JUMPER by STEFANOVIC, SASHA			
09:55				REBOUND (DEF) by SMITH JR., SERREL
09:49	FOUL (PERSONAL) by WILLIAMS, TREVION			
09:49		14-17	V 3	GOOD! FT by AYALA, ERIC
09:49	SUB OUT: WILLIAMS, TREVION			
09:49	SUB IN: HAARMS, MATT			
09:48				MISSED FT by AYALA, ERIC
09:48	REBOUND (DEF) by HAARMS, MATT			
09:48				FOUL (PERSONAL) by FERNANDO, BRUNO
09:48	MISSED FT by HAARMS, MATT			
09:48	REBOUND (OFF) by TEAM			
09:48	GOOD! FT by HAARMS, MATT	14-18	V 4	
09:26	MISSED JUMPER by CLINE, RYAN			
09:24				REBOUND (DEF) by TEAM
09:24				SUB OUT: LINDO JR., RICKY
09:24				SUB IN: SMITH, JALEN
09:24	SUB OUT: STEFANOVIC, SASHA			
09:24	SUB IN: EDWARDS, CARSEN			
09:17	FOUL (PERSONAL) by EASTERN, NOJEL			
09:02				MISSED 3PTR by WIGGINS, AARON
08:58	REBOUND (DEF) by HAARMS, MATT			
08:50	GOOD! JUMPER by EDWARDS, CARSEN	14-20	V 6	
08:34				TURNOVER (TRAVEL) by SMITH, JALEN
08:34				SUB OUT: SMITH JR., SERREL
08:34				SUB IN: MORSELL, DARRYL
08:34	SUB OUT: EIFERT, GRADY			
08:34	SUB IN: WHEELER, AARON			
08:34	SUB OUT: EASTERN, NOJEL			
08:34	SUB IN: HUNTER JR., ERIC			
08:20	MISSED 3PTR by EDWARDS, CARSEN			
08:16				REBOUND (DEF) by WIGGINS, AARON
08:10				TURNOVER (LOSTBALL) by FERNANDO, BRUNO
08:10	STEAL by WHEELER, AARON			
08:04	GOOD! 3PTR by CLINE, RYAN [FB]	14-23	V 9	
08:04	ASSIST by HUNTER JR., ERIC			
08:04				TIMEOUT 30SEC
08:04				
08:04				SUB OUT: WIGGINS, AARON
08:04				SUB IN: COWAN, ANTHONY
07:49		16-23	V 7	GOOD! LAYUP by AYALA, ERIC
07:49	FOUL (PERSONAL) by HAARMS, MATT			
07:49		17-23	V 6	GOOD! FT by AYALA, ERIC
07:35	MISSED 3PTR by EDWARDS, CARSEN			
07:31				REBOUND (DEF) by AYALA, ERIC
07:27				MISSED 3PTR by AYALA, ERIC
07:23	REBOUND (DEF) by HAARMS, MATT			
07:02	MISSED JUMPER by CLINE, RYAN			
06:54	REBOUND (OFF) by HAARMS, MATT			
06:54	MISSED LAYUP by HAARMS, MATT			
06:51				REBOUND (DEF) by FERNANDO, BRUNO
06:45				MISSED 3PTR by SMITH, JALEN
06:40	REBOUND (DEF) by EDWARDS, CARSEN			
06:36	GOOD! 3PTR by WHEELER, AARON [FB]	17-26	V 9	
06:36	ASSIST by HUNTER JR., ERIC			
06:15		19-26	V 7	GOOD! DUNK by FERNANDO, BRUNO
06:15				ASSIST by MORSELL, DARRYL
05:51	MISSED 3PTR by WHEELER, AARON			
05:48				REBOUND (DEF) by AYALA, ERIC
05:45				MISSED 3PTR by MORSELL, DARRYL
05:41	REBOUND (DEF) by TEAM			
05:41				SUB OUT: SMITH, JALEN

Time	VISITORS: Purdue	Score	Margin	HOME: Maryland
05:41				SUB IN: LINDO JR.,RICKY
05:41	SUB OUT: HAARMS,MATT			
05:41	SUB IN: BOUDREAU,EVAN			
05:41	SUB OUT: HUNTER JR.,ERIC			
05:41	SUB IN: EASTERN,NOJEL			
05:24	GOOD! JUMPER by EDWARDS,CARSEN	19-28	V 9	
05:06	FOUL (PERSONAL) by BOUDREAU,EVAN			
04:53				MISSED 3PTR by COWAN,ANTHONY
04:49	REBOUND (DEF) by EDWARDS,CARSEN			
04:43	TURNOVER (LOSTBALL) by EDWARDS,CARSEN			
04:43				STEAL by MORSELL,DARRYL
04:35		21-28	V 7	GOOD! LAYUP by COWAN,ANTHONY [FB]
04:35				ASSIST by LINDO JR.,RICKY
04:22				FOUL (PERSONAL) by LINDO JR.,RICKY
04:22	SUB OUT: WHEELER,AARON			
04:22	SUB IN: EIFERT,GRADY			
04:16	MISSED JUMPER by EASTERN,NOJEL			
04:09				REBOUND (DEF) by LINDO JR.,RICKY
03:59				MISSED LAYUP by LINDO JR.,RICKY
03:55	REBOUND (DEF) by CLINE,RYAN			
03:55				FOUL (PERSONAL) by LINDO JR.,RICKY
03:55				SUB OUT: LINDO JR.,RICKY
03:55				SUB IN: SMITH,JALEN
03:49	GOOD! LAYUP by EIFERT,GRADY	21-30	V 9	
03:35				TURNOVER (BADPASS) by AYALA,ERIC
03:35	STEAL by EDWARDS,CARSEN			
03:28	GOOD! DUNK by EDWARDS,CARSEN [FB]	21-32	V 11	
03:09		24-32	V 8	GOOD! 3PTR by COWAN,ANTHONY
03:09				ASSIST by MORSELL,DARRYL
02:49				FOUL (PERSONAL) by MORSELL,DARRYL
02:49				SUB OUT: AYALA,ERIC
02:49				SUB IN: WIGGINS,AARON
02:41	MISSED 3PTR by EDWARDS,CARSEN			
02:32				REBOUND (DEF) by WIGGINS,AARON
02:15		26-32	V 6	GOOD! DUNK by MORSELL,DARRYL
02:15				ASSIST by FERNANDO,BRUNO
01:54	TURNOVER (BADPASS) by CLINE,RYAN			
01:54				STEAL by WIGGINS,AARON
01:28				TURNOVER (LOSTBALL) by COWAN,ANTHONY
01:28	STEAL by EDWARDS,CARSEN			
01:25				FOUL (PERSONAL) by COWAN,ANTHONY
01:25	GOOD! FT by EDWARDS,CARSEN [FB]	26-33	V 7	
01:25	SUB OUT: BOUDREAU,EVAN			
01:25	SUB IN: HAARMS,MATT			
01:24	MISSED FT by EDWARDS,CARSEN			
01:22				REBOUND (DEF) by FERNANDO,BRUNO
00:59		29-33	V 4	GOOD! 3PTR by WIGGINS,AARON
00:59				ASSIST by FERNANDO,BRUNO
00:50	MISSED 3PTR by EDWARDS,CARSEN			
00:48				REBOUND (DEF) by FERNANDO,BRUNO
00:48	FOUL (PERSONAL) by HAARMS,MATT			
00:48	SUB OUT: HAARMS,MATT			
00:48	SUB IN: BOUDREAU,EVAN			
00:48		30-33	V 3	GOOD! FT by FERNANDO,BRUNO
00:48				MISSED FT by FERNANDO,BRUNO
00:46	REBOUND (DEF) by EASTERN,NOJEL			
00:40				FOUL (PERSONAL) by FERNANDO,BRUNO
00:40	GOOD! FT by EDWARDS,CARSEN	30-34	V 4	
00:40				SUB OUT: MORSELL,DARRYL
00:40				SUB IN: AYALA,ERIC
00:40	GOOD! FT by EDWARDS,CARSEN	30-35	V 5	
00:13				MISSED 3PTR by AYALA,ERIC
00:09	REBOUND (DEF) by EIFERT,GRADY			
00:04	GOOD! 3PTR by CLINE,RYAN [FB]	30-38	V 8	

Purdue 38, Maryland 30

Points from (This Period)	PUR	UMD
In the Paint	10	12
Off Turns	8	2
2nd Chance	5	0
Fast Break	14	6
Bench	6	6

Official Box Score
Purdue vs Maryland
Second Half Statistics Only
February 12, 2019 at XFINITY Center - College Park, Md.

Purdue 18

No.	Player	S	Pts	FG	3FG	FT	OR	DR	TR	PF	A	TO	Blk	Stl	Min	+/-
03	Edwards, Carsen		7	2-13	1-5	2-4	3	2	5	0	0	1	0	0	19	-20
14	Cline, Ryan		0	0-7	0-5	0-0	0	1	1	0	0	0	0	1	17	-20
20	Eastern, Nojel		2	1-3	0-0	0-0	4	1	5	1	1	0	0	0	18	-23
24	Eifert, Grady		0	0-1	0-1	0-0	0	1	1	2	0	0	0	1	12	-11
50	Williams, Trevion		4	2-2	0-0	0-0	2	1	3	2	0	0	0	0	7	-9
01	Wheeler, Aaron		0	0-4	0-3	0-0	0	0	0	0	0	0	0	0	8	-11
02	Hunter Jr., Eric		0	0-1	0-1	0-0	0	0	0	1	0	0	0	0	3	-2
12	Boudreaux, Evan		0	0-0	0-0	0-0	0	0	0	0	0	0	0	0	0	0
32	Haarms, Matt		5	1-4	0-0	3-4	1	1	2	3	0	0	0	0	12	-10
55	Stefanovic, Sasha		0	0-1	0-1	0-0	0	0	0	1	0	0	0	0	4	-4
	Team						3	0	3	0		1				
TOTALS			18	6-36	1-16	5-8	13	7	20	10	1	2	0	2	100	

Shooting By Period

Period	FG	FG%	3FG	3FG%	FT	FT%
2nd Half	6-36	17%	1-16	06%	5-8	63%
Game	20-71	28.2%	7-33	21.2%	9-14	64.3%

Last FG Half: PUR -

Maryland 40

No.	Player	S	Pts	FG	3FG	FT	OR	DR	TR	PF	A	TO	Blk	Stl	Min	+/-
01	Cowan, Anthony		4	1-5	0-4	2-3	0	2	2	1	5	2	1	1	20	22
05	Ayala, Eric		6	2-3	2-3	0-0	0	1	1	0	0	1	0	0	12	14
11	Morsell, Darryl		2	1-2	0-1	0-0	0	1	1	1	0	0	2	0	17	20
23	Fernando, Bruno		9	3-3	0-0	3-5	2	6	8	2	1	1	0	0	15	20
25	Smith, Jalen		14	6-8	0-1	2-2	2	1	3	1	1	0	2	0	19	20
00	Tomaic, Joshua		0	0-0	0-0	0-0	0	0	0	0	0	0	0	0	0	0
02	Wiggins, Aaron		5	2-3	1-2	0-0	0	1	1	1	1	0	0	0	10	12
10	Smith Jr., Serrel		0	0-1	0-1	0-0	0	0	0	0	0	0	0	0	2	0
14	Lindo Jr., Ricky		0	0-0	0-0	0-0	0	1	1	1	0	0	0	0	5	2
	Team						0	5	5	0		0				
TOTALS			40	15-25	3-12	7-10	4	18	22	7	8	4	5	1	100	

Shooting By Period

Period	FG	FG%	3FG	3FG%	FT	FT%
2nd Half	15-25	60%	3-12	25%	7-10	70%
Game	26-52	50.0%	8-27	29.6%	10-15	66.7%

Last FG Half: UMD -

Game Notes:

Officials: Lamont Simpson, Brian Dorsey, Rob Kueneman
 Attendance: Not Counted Yet

Start Time: 11:30 PM
 Conference Game;

Score	1st	2nd	TOT
PUR	38	18	56
UMD	30	40	70

Points from (This Period)	PUR	UMD
In the Paint	10	24
Off Turns	6	2
2nd Chance	6	7
Fast Break	2	4
Bench	5	5

**Official Play-By-Play
Purdue vs Maryland
Second Half
February 12, 2019 at XFINITY Center - College Park, Md.**

Period 2

Starters:

Purdue: 14 CLINE, RYAN; 20 EASTERN, NOJEL; 24 EIFERT, GRADY; 50 WILLIAMS, TREVION; 3 EDWARDS, CARSEN;

Maryland: 11 MORSELL, DARRYL; 23 FERNANDO, BRUNO; 25 SMITH, JALEN; 1 COWAN, ANTHONY; 5 AYALA, ERIC;

Time	VISITORS: Purdue	Score	Margin	HOME: Maryland
19:39		32-38	V 6	GOOD! JUMPER by COWAN, ANTHONY [PNT]
19:39	FOUL (PERSONAL) by EIFERT, GRADY			
19:39		33-38	V 5	GOOD! FT by COWAN, ANTHONY
19:18	MISSED 3PTR by CLINE, RYAN			
19:14				REBOUND (DEF) by TEAM
18:58		35-38	V 3	GOOD! JUMPER by MORSELL, DARRYL [PNT]
18:32	MISSED JUMPER by EDWARDS, CARSEN			
18:32	REBOUND (OFF) by EDWARDS, CARSEN			
18:32				BLOCK by MORSELL, DARRYL
18:23	MISSED JUMPER by EDWARDS, CARSEN			
18:23				REBOUND (DEF) by TEAM
18:23				BLOCK by COWAN, ANTHONY
18:23				TURNOVER (BADPASS) by COWAN, ANTHONY
18:13	MISSED JUMPER by EDWARDS, CARSEN			
18:06	REBOUND (OFF) by WILLIAMS, TREVION			
18:06	GOOD! DUNK by WILLIAMS, TREVION	35-40	V 5	
17:34	FOUL (PERSONAL) by WILLIAMS, TREVION			
17:34				MISSED FT by FERNANDO, BRUNO
17:34				REBOUND (OFF) by TEAM
17:34				SUB OUT: AYALA, ERIC
17:34				SUB IN: WIGGINS, AARON
17:34	SUB OUT: WILLIAMS, TREVION			
17:34	SUB IN: HAARMS, MATT			
17:34		36-40	V 4	GOOD! FT by FERNANDO, BRUNO
17:15	MISSED JUMPER by HAARMS, MATT			
17:08	REBOUND (OFF) by EASTERN, NOJEL			
17:08	MISSED LAYUP by EASTERN, NOJEL			
17:08	REBOUND (OFF) by EASTERN, NOJEL			
17:08				BLOCK by SMITH, JALEN
17:03	MISSED 3PTR by EDWARDS, CARSEN			
17:03				BLOCK by MORSELL, DARRYL
17:03	REBOUND (OFF) by EASTERN, NOJEL			
17:01	TURNOVER (SHOTCLOCK) by			
16:59		38-40	V 2	GOOD! LAYUP by SMITH, JALEN [FB]
16:59				ASSIST by COWAN, ANTHONY
16:57	TIMEOUT 30SEC			
16:57				
16:51	MISSED 3PTR by CLINE, RYAN			
16:48	REBOUND (OFF) by TEAM			
16:25	MISSED 3PTR by CLINE, RYAN			
16:20	REBOUND (OFF) by EDWARDS, CARSEN			
16:19	MISSED JUMPER by EDWARDS, CARSEN			
16:18				REBOUND (DEF) by TEAM
16:18				SUB OUT: WIGGINS, AARON
16:18				SUB IN: SMITH JR., SERREL
15:53		40-40	T	GOOD! DUNK by SMITH, JALEN
15:53				ASSIST by FERNANDO, BRUNO
15:35	TURNOVER (LOSTBALL) by EDWARDS, CARSEN			
15:35				STEAL by COWAN, ANTHONY
15:20				MISSED 3PTR by COWAN, ANTHONY
15:15	REBOUND (DEF) by EIFERT, GRADY			
15:06	MISSED 3PTR by EIFERT, GRADY			
15:01				REBOUND (DEF) by FERNANDO, BRUNO
14:42				MISSED 3PTR by SMITH JR., SERREL
14:38	REBOUND (DEF) by HAARMS, MATT			
14:33	GOOD! LAYUP by EDWARDS, CARSEN [FB]	40-42	V 2	
14:06				TURNOVER (BADPASS) by FERNANDO, BRUNO
14:06	STEAL by EIFERT, GRADY			
13:51				FOUL (PERSONAL) by SMITH, JALEN
13:51				
13:51				SUB OUT: SMITH JR., SERREL
13:51				SUB IN: AYALA, ERIC
13:51				SUB OUT: MORSELL, DARRYL
13:51				SUB IN: LINDO JR., RICKY
13:51				SUB OUT: FERNANDO, BRUNO
13:51				SUB IN: WIGGINS, AARON
13:51	SUB OUT: CLINE, RYAN			
13:51	SUB IN: HUNTER JR., ERIC			
13:51	SUB OUT: EASTERN, NOJEL			
13:51	SUB IN: STEFANOVIC, SASHA			
13:51	SUB OUT: EIFERT, GRADY			
13:51	SUB IN: WHEELER, AARON			
13:51	GOOD! FT by HAARMS, MATT	40-43	V 3	
13:51	GOOD! FT by HAARMS, MATT	40-44	V 4	
13:28	FOUL (PERSONAL) by STEFANOVIC, SASHA			
13:19		42-44	V 2	GOOD! JUMPER by SMITH, JALEN [PNT]

Time	VISITORS: Purdue	Score	Margin	HOME: Maryland
13:04				FOUL (PERSONAL) by LINDO JR.,RICKY
13:04	MISSED FT by HAARMS,MATT			
13:04	REBOUND (OFF) by TEAM			
13:04	GOOD! FT by HAARMS,MATT	42-45	V 3	
12:49				MISSED 3PTR by SMITH,JALEN
12:46	REBOUND (DEF) by EDWARDS,CARSEN			
12:41	GOOD! 3PTR by EDWARDS,CARSEN	42-48	V 6	
12:25		45-48	V 3	GOOD! 3PTR by AYALA,ERIC
12:25				ASSIST by COWAN,ANTHONY
12:12	MISSED 3PTR by EDWARDS,CARSEN			
12:12				SUB OUT: LINDO JR.,RICKY
12:12				SUB IN: FERNANDO,BRUNO
12:09				REBOUND (DEF) by TEAM
11:50				
11:50	SUB OUT: HUNTER JR.,ERIC			
11:50	SUB IN: EASTERN,NOJEL			
11:47		48-48	T	GOOD! 3PTR by AYALA,ERIC
11:47				ASSIST by WIGGINS,AARON
11:32				FOUL (PERSONAL) by FERNANDO,BRUNO
11:32				SUB OUT: FERNANDO,BRUNO
11:32				SUB IN: LINDO JR.,RICKY
11:27	MISSED 3PTR by WHEELER,AARON			
11:23				REBOUND (DEF) by WIGGINS,AARON
11:01	FOUL (PERSONAL) by EASTERN,NOJEL			
11:01	SUB OUT: EDWARDS,CARSEN			
11:01	SUB IN: CLINE,RYAN			
11:01	SUB OUT: HAARMS,MATT			
11:01	SUB IN: WILLIAMS,TREVION			
10:47				TURNOVER (BADPASS) by AYALA,ERIC
10:47	STEAL by CLINE,RYAN			
10:28				FOUL (PERSONAL) by WIGGINS,AARON
10:28				SUB OUT: AYALA,ERIC
10:28				SUB IN: MORSELL,DARRYL
10:22	MISSED 3PTR by STEFANOVIC,SASHA			
10:18				REBOUND (DEF) by LINDO JR.,RICKY
10:14		50-48	H 2	GOOD! DUNK by SMITH,JALEN [FB]
10:14				ASSIST by COWAN,ANTHONY
09:54	MISSED LAYUP by WHEELER,AARON			
09:54				BLOCK by SMITH,JALEN
09:52				REBOUND (DEF) by COWAN,ANTHONY
09:51				FOUL (OFF) by COWAN,ANTHONY
09:51				TURNOVER (OFFENSIVE) by COWAN,ANTHONY
09:51	SUB OUT: WHEELER,AARON			
09:51	SUB IN: EIFERT,GRADY			
09:51	SUB OUT: STEFANOVIC,SASHA			
09:51	SUB IN: EDWARDS,CARSEN			
09:37	MISSED LAYUP by CLINE,RYAN			
09:29	REBOUND (OFF) by EDWARDS,CARSEN			
09:20	GOOD! LAYUP by EASTERN,NOJEL	50-50	T	
08:58		53-50	H 3	GOOD! 3PTR by WIGGINS,AARON
08:24	MISSED 3PTR by CLINE,RYAN			
08:20	REBOUND (OFF) by TEAM			
08:17	MISSED JUMPER by EDWARDS,CARSEN			
08:11	REBOUND (OFF) by WILLIAMS,TREVION			
08:11	GOOD! LAYUP by WILLIAMS,TREVION	53-52	H 1	
07:52		55-52	H 3	GOOD! JUMPER by WIGGINS,AARON [PNT]
07:50				TIMEOUT 30SEC
07:50				
07:50				SUB OUT: LINDO JR.,RICKY
07:50				SUB IN: FERNANDO,BRUNO
07:31	MISSED 3PTR by EDWARDS,CARSEN			
07:29				REBOUND (DEF) by TEAM
07:29	SUB OUT: WILLIAMS,TREVION			
07:29	SUB IN: HAARMS,MATT			
07:10				MISSED 3PTR by WIGGINS,AARON
07:07				REBOUND (OFF) by FERNANDO,BRUNO
07:05				MISSED 3PTR by COWAN,ANTHONY
07:01				REBOUND (OFF) by SMITH,JALEN
07:00		57-52	H 5	GOOD! LAYUP by SMITH,JALEN
06:34	MISSED JUMPER by CLINE,RYAN			
06:32	REBOUND (OFF) by EASTERN,NOJEL			
06:29	MISSED JUMPER by HAARMS,MATT			
06:26	REBOUND (OFF) by TEAM			
06:25				SUB OUT: WIGGINS,AARON
06:25				SUB IN: AYALA,ERIC
06:17	MISSED JUMPER by EDWARDS,CARSEN			
06:14				REBOUND (DEF) by FERNANDO,BRUNO
06:01	FOUL (PERSONAL) by HAARMS,MATT			
05:53		59-52	H 7	GOOD! DUNK by FERNANDO,BRUNO
05:53				ASSIST by SMITH,JALEN
05:44	TIMEOUT 30SEC			
05:34				FOUL (PERSONAL) by MORSELL,DARRYL
05:34	MISSED FT by EDWARDS,CARSEN			
05:34	REBOUND (OFF) by TEAM			
05:33	MISSED FT by EDWARDS,CARSEN			
05:31				REBOUND (DEF) by FERNANDO,BRUNO
05:14				MISSED 3PTR by COWAN,ANTHONY

Time	VISITORS: Purdue	Score	Margin	HOME: Maryland
05:11	REBOUND (DEF) by CLINE,RYAN			
05:04	MISSED LAYUP by EASTERN,NOJEL			
04:56	REBOUND (OFF) by HAARMS,MATT			
04:55	MISSED LAYUP by HAARMS,MATT			
04:50				REBOUND (DEF) by FERNANDO,BRUNO
04:45	FOUL (PERSONAL) by EIFERT,GRADY			
04:28	FOUL (PERSONAL) by HAARMS,MATT			
04:28				MISSED FT by FERNANDO,BRUNO
04:28				REBOUND (OFF) by TEAM
04:28		60-52	H 8	GOOD! FT by FERNANDO,BRUNO
04:28	SUB OUT: EIFERT,GRADY			
04:28	SUB IN: WHEELER,AARON			
04:15	GOOD! LAYUP by HAARMS,MATT	60-54	H 6	
04:15	ASSIST by EASTERN,NOJEL			
03:48				MISSED 3PTR by COWAN,ANTHONY
03:46	REBOUND (DEF) by EASTERN,NOJEL			
03:30	MISSED 3PTR by WHEELER,AARON			
03:24				REBOUND (DEF) by SMITH,JALEN
03:03		62-54	H 8	GOOD! DUNK by SMITH,JALEN
03:03				ASSIST by COWAN,ANTHONY
02:51	MISSED LAYUP by EDWARDS,CARSEN			
02:47				REBOUND (DEF) by COWAN,ANTHONY
02:26				MISSED LAYUP by SMITH,JALEN
02:25				REBOUND (OFF) by SMITH,JALEN
02:25	FOUL (PERSONAL) by HAARMS,MATT			
02:25	SUB OUT: HAARMS,MATT			
02:25	SUB IN: WILLIAMS,TREVION			
02:25		63-54	H 9	GOOD! FT by SMITH,JALEN
02:25		64-54	H 10	GOOD! FT by SMITH,JALEN
02:13	MISSED 3PTR by WHEELER,AARON			
02:08				REBOUND (DEF) by FERNANDO,BRUNO
01:50				MISSED 3PTR by AYALA,ERIC
01:49				REBOUND (OFF) by FERNANDO,BRUNO
01:48		66-54	H 12	GOOD! LAYUP by FERNANDO,BRUNO
01:48	FOUL (PERSONAL) by WILLIAMS,TREVION			
01:48		67-54	H 13	GOOD! FT by FERNANDO,BRUNO
01:40	MISSED 3PTR by EDWARDS,CARSEN			
01:25				REBOUND (DEF) by AYALA,ERIC
01:11				MISSED 3PTR by MORSELL,DARRYL
01:07	REBOUND (DEF) by WILLIAMS,TREVION			
00:59				FOUL (PERSONAL) by FERNANDO,BRUNO
00:59	GOOD! FT by EDWARDS,CARSEN	67-55	H 12	
00:59	GOOD! FT by EDWARDS,CARSEN	67-56	H 11	
00:59	SUB OUT: WILLIAMS,TREVION			
00:59	SUB IN: HUNTER JR.,ERIC			
00:54	FOUL (PERSONAL) by HUNTER JR.,ERIC			
00:54		68-56	H 12	GOOD! FT by COWAN,ANTHONY
00:54				SUB OUT: SMITH,JALEN
00:54				SUB IN: WIGGINS,AARON
00:53				MISSED FT by COWAN,ANTHONY
00:51	REBOUND (DEF) by EDWARDS,CARSEN			
00:43	MISSED 3PTR by CLINE,RYAN			
00:39				REBOUND (DEF) by MORSELL,DARRYL
00:28		70-56	H 14	GOOD! DUNK by FERNANDO,BRUNO
00:28				ASSIST by COWAN,ANTHONY
00:17	MISSED 3PTR by HUNTER JR.,ERIC			
00:14				REBOUND (DEF) by FERNANDO,BRUNO

Purdue 56, Maryland 70

Points from (This Period)	PUR	UMD
In the Paint	10	24
Off Turns	6	2
2nd Chance	6	7
Fast Break	2	4
Bench	5	5

Official Scoring/Possession Reference Chart
Purdue vs Maryland
Period 1
February 12, 2019 at XFINITY Center - College Park, Md.

Period 1

Starters:

Purdue: 14 CLINE, RYAN; 20 EASTERN, NOJEL; 24 EIFERT, GRADY; 50 WILLIAMS, TREVION; 3 EDWARDS, CARSEN;

Maryland: 11 MORSELL, DARRYL; 23 FERNANDO, BRUNO; 25 SMITH, JALEN; 1 COWAN, ANTHONY; 5 AYALA, ERIC;

Time	VISITORS: Purdue	Score	Margin	HOME: Maryland
19:21	GOOD! 3PTR by EDWARDS, CARSEN	0-3	V 3	
17:29	GOOD! LAYUP by EDWARDS, CARSEN [FB]	0-5	V 5	
15:16		2-5	V 3	GOOD! DUNK by SMITH, JALEN [FB]
14:36	GOOD! 3PTR by EDWARDS, CARSEN	2-8	V 6	
14:14		5-8	V 3	GOOD! 3PTR by COWAN, ANTHONY
13:41		7-8	V 1	GOOD! LAYUP by AYALA, ERIC [FB]
13:05	GOOD! JUMPER by BOUDREAUX, EVAN	7-10	V 3	
12:45		10-10	T	GOOD! 3PTR by AYALA, ERIC
12:23	GOOD! 3PTR by CLINE, RYAN	10-13	V 3	
10:56	GOOD! LAYUP by EASTERN, NOJEL	10-15	V 5	
10:40		13-15	V 2	GOOD! 3PTR by WIGGINS, AARON
10:19	GOOD! JUMPER by WILLIAMS, TREVION [PNT]	13-17	V 4	
09:49		14-17	V 3	GOOD! FT by AYALA, ERIC
09:48	GOOD! FT by HAARMS, MATT	14-18	V 4	
08:50	GOOD! JUMPER by EDWARDS, CARSEN	14-20	V 6	
08:04	GOOD! 3PTR by CLINE, RYAN [FB]	14-23	V 9	
07:49		16-23	V 7	GOOD! LAYUP by AYALA, ERIC
07:49		17-23	V 6	GOOD! FT by AYALA, ERIC
06:36	GOOD! 3PTR by WHEELER, AARON [FB]	17-26	V 9	
06:15		19-26	V 7	GOOD! DUNK by FERNANDO, BRUNO
05:24	GOOD! JUMPER by EDWARDS, CARSEN	19-28	V 9	
04:35		21-28	V 7	GOOD! LAYUP by COWAN, ANTHONY [FB]
03:49	GOOD! LAYUP by EIFERT, GRADY	21-30	V 9	
03:28	GOOD! DUNK by EDWARDS, CARSEN [FB]	21-32	V 11	
03:09		24-32	V 8	GOOD! 3PTR by COWAN, ANTHONY
02:15		26-32	V 6	GOOD! DUNK by MORSELL, DARRYL
01:25	GOOD! FT by EDWARDS, CARSEN [FB]	26-33	V 7	
00:59		29-33	V 4	GOOD! 3PTR by WIGGINS, AARON
00:48		30-33	V 3	GOOD! FT by FERNANDO, BRUNO
00:40	GOOD! FT by EDWARDS, CARSEN	30-34	V 4	
00:40	GOOD! FT by EDWARDS, CARSEN	30-35	V 5	
00:04	GOOD! 3PTR by CLINE, RYAN [FB]	30-38	V 8	

Purdue 38, Maryland 30

Official Scoring/Possession Reference Chart
Purdue vs Maryland
Period 2
February 12, 2019 at XFINITY Center - College Park, Md.

Period 2

Starters:

Purdue: 14 CLINE, RYAN; 20 EASTERN, NOJEL; 24 EIFERT, GRADY; 50 WILLIAMS, TREVION; 3 EDWARDS, CARSEN;

Maryland: 11 MORSELL, DARRYL; 23 FERNANDO, BRUNO; 25 SMITH, JALEN; 1 COWAN, ANTHONY; 5 AYALA, ERIC;

Time	VISITORS: Purdue	Score	Margin	HOME: Maryland
19:39		32-38	V 6	GOOD! JUMPER by COWAN, ANTHONY [PNT]
19:39		33-38	V 5	GOOD! FT by COWAN, ANTHONY
18:58		35-38	V 3	GOOD! JUMPER by MORSELL, DARRYL [PNT]
18:06	GOOD! DUNK by WILLIAMS, TREVION	35-40	V 5	
17:34		36-40	V 4	GOOD! FT by FERNANDO, BRUNO
16:59		38-40	V 2	GOOD! LAYUP by SMITH, JALEN [FB]
15:53		40-40	T	GOOD! DUNK by SMITH, JALEN
14:33	GOOD! LAYUP by EDWARDS, CARSEN [FB]	40-42	V 2	
13:51	GOOD! FT by HAARMS, MATT	40-43	V 3	
13:51	GOOD! FT by HAARMS, MATT	40-44	V 4	
13:19		42-44	V 2	GOOD! JUMPER by SMITH, JALEN [PNT]
13:04	GOOD! FT by HAARMS, MATT	42-45	V 3	
12:41	GOOD! 3PTR by EDWARDS, CARSEN	42-48	V 6	
12:25		45-48	V 3	GOOD! 3PTR by AYALA, ERIC
11:47		48-48	T	GOOD! 3PTR by AYALA, ERIC
10:14		50-48	H 2	GOOD! DUNK by SMITH, JALEN [FB]
09:20	GOOD! LAYUP by EASTERN, NOJEL	50-50	T	
08:58		53-50	H 3	GOOD! 3PTR by WIGGINS, AARON
08:11	GOOD! LAYUP by WILLIAMS, TREVION	53-52	H 1	
07:52		55-52	H 3	GOOD! JUMPER by WIGGINS, AARON [PNT]
07:00		57-52	H 5	GOOD! LAYUP by SMITH, JALEN
05:53		59-52	H 7	GOOD! DUNK by FERNANDO, BRUNO
04:28		60-52	H 8	GOOD! FT by FERNANDO, BRUNO
04:15	GOOD! LAYUP by HAARMS, MATT	60-54	H 6	
03:03		62-54	H 8	GOOD! DUNK by SMITH, JALEN
02:25		63-54	H 9	GOOD! FT by SMITH, JALEN
02:25		64-54	H 10	GOOD! FT by SMITH, JALEN
01:48		66-54	H 12	GOOD! LAYUP by FERNANDO, BRUNO
01:48		67-54	H 13	GOOD! FT by FERNANDO, BRUNO
00:59	GOOD! FT by EDWARDS, CARSEN	67-55	H 12	
00:59	GOOD! FT by EDWARDS, CARSEN	67-56	H 11	
00:54		68-56	H 12	GOOD! FT by COWAN, ANTHONY
00:28		70-56	H 14	GOOD! DUNK by FERNANDO, BRUNO

Purdue 56, Maryland 70

Official Substitutions Log
Purdue vs Maryland
Period 1
February 12, 2019 at XFINITY Center - College Park, Md.

VISITORS: Purdue	Time	Score	HOME: Maryland
14 CLINE, RYAN			11 MORSELL, DARRYL
20 EASTERN, NOJEL			23 FERNANDO, BRUNO
24 EIFERT, GRADY			25 SMITH, JALEN
50 WILLIAMS, TREVION			1 COWAN, ANTHONY
3 EDWARDS, CARSEN			5 AYALA, ERIC
SUB OUT: 50 WILLIAMS, TREVION	18:57	3-0	
SUB IN: 32 HAARMS, MATT	18:57		
SUB OUT: 20 EASTERN, NOJEL	15:54	5-0	
SUB IN: 2 HUNTER JR., ERIC	15:54		
SUB OUT: 2 HUNTER JR., ERIC	13:41	8-7	
SUB IN: 1 WHEELER, AARON	13:41		
SUB OUT: 24 EIFERT, GRADY	13:41		
SUB IN: 20 EASTERN, NOJEL	13:41		
SUB OUT: 32 HAARMS, MATT	13:41		
SUB IN: 12 BOUDREAU, EVAN	13:41		
	12:08	13-10	SUB OUT: AYALA, ERIC
	12:08		SUB IN: LINDO JR., RICKY
	12:08		SUB OUT: MORSELL, DARRYL
	12:08		SUB IN: SMITH JR., SERREL
	12:08		SUB OUT: FERNANDO, BRUNO
	12:08		SUB IN: TOMAIC, JOSHUA
	12:08		SUB OUT: SMITH, JALEN
	12:08		SUB IN: WIGGINS, AARON
SUB OUT: 14 CLINE, RYAN	12:08		
SUB IN: 55 STEFANOVIC, SASHA	12:08		
	11:17	13-10	SUB OUT: TOMAIC, JOSHUA
	11:17		SUB IN: FERNANDO, BRUNO
SUB OUT: 3 EDWARDS, CARSEN	11:17		
SUB IN: 14 CLINE, RYAN	11:17		
SUB OUT: 12 BOUDREAU, EVAN	11:17		
SUB IN: 50 WILLIAMS, TREVION	11:17		
	10:02	17-13	SUB OUT: COWAN, ANTHONY
	10:02		SUB IN: AYALA, ERIC
SUB OUT: 1 WHEELER, AARON	10:02		
SUB IN: 24 EIFERT, GRADY	10:02		
SUB OUT: 50 WILLIAMS, TREVION	09:49	17-14	
SUB IN: 32 HAARMS, MATT	09:49		
	09:24	18-14	SUB OUT: LINDO JR., RICKY
	09:24		SUB IN: SMITH, JALEN
SUB OUT: 55 STEFANOVIC, SASHA	09:24		
SUB IN: 3 EDWARDS, CARSEN	09:24		
	08:34	20-14	SUB OUT: SMITH JR., SERREL
	08:34		SUB IN: MORSELL, DARRYL
SUB OUT: 24 EIFERT, GRADY	08:34		
SUB IN: 1 WHEELER, AARON	08:34		
SUB OUT: 20 EASTERN, NOJEL	08:34		
SUB IN: 2 HUNTER JR., ERIC	08:34		
	08:04	23-14	SUB OUT: WIGGINS, AARON
	08:04		SUB IN: COWAN, ANTHONY
	05:41	26-19	SUB OUT: SMITH, JALEN
	05:41		SUB IN: LINDO JR., RICKY
SUB OUT: 32 HAARMS, MATT	05:41		
SUB IN: 12 BOUDREAU, EVAN	05:41		
SUB OUT: 2 HUNTER JR., ERIC	05:41		
SUB IN: 20 EASTERN, NOJEL	05:41		
SUB OUT: 1 WHEELER, AARON	04:22	28-21	
SUB IN: 24 EIFERT, GRADY	04:22		
	03:55	28-21	SUB OUT: LINDO JR., RICKY
	03:55		SUB IN: SMITH, JALEN
	02:49	32-24	SUB OUT: AYALA, ERIC
	02:49		SUB IN: WIGGINS, AARON
SUB OUT: 12 BOUDREAU, EVAN	01:25	33-26	
SUB IN: 32 HAARMS, MATT	01:25		
SUB OUT: 32 HAARMS, MATT	00:48	33-29	
SUB IN: 12 BOUDREAU, EVAN	00:48		
	00:40	34-30	SUB OUT: MORSELL, DARRYL
	00:40		SUB IN: AYALA, ERIC

Purdue 38, Maryland 30

Official Substitutions Log
Purdue vs Maryland
Period 2
February 12, 2019 at XFINITY Center - College Park, Md.

VISITORS: Purdue	Time	Score	HOME: Maryland
14 CLINE, RYAN			11 MORSELL, DARRYL
20 EASTERN, NOJEL			23 FERNANDO, BRUNO
24 EIFERT, GRADY			25 SMITH, JALEN
50 WILLIAMS, TREVION			1 COWAN, ANTHONY
3 EDWARDS, CARSEN			5 AYALA, ERIC
	17:34	40-35	SUB OUT: AYALA, ERIC
	17:34		SUB IN: WIGGINS, AARON
SUB OUT: 50 WILLIAMS, TREVION	17:34		
SUB IN: 32 HAARMS, MATT	17:34		
	16:18	40-38	SUB OUT: WIGGINS, AARON
	16:18		SUB IN: SMITH JR., SERREL
	13:51	42-40	SUB OUT: SMITH JR., SERREL
	13:51		SUB IN: AYALA, ERIC
	13:51		SUB OUT: MORSELL, DARRYL
	13:51		SUB IN: LINDO JR., RICKY
	13:51		SUB OUT: FERNANDO, BRUNO
	13:51		SUB IN: WIGGINS, AARON
SUB OUT: 14 CLINE, RYAN	13:51		
SUB IN: 2 HUNTER JR., ERIC	13:51		
SUB OUT: 20 EASTERN, NOJEL	13:51		
SUB IN: 55 STEFANOVIC, SASHA	13:51		
SUB OUT: 24 EIFERT, GRADY	13:51		
SUB IN: 1 WHEELER, AARON	13:51		
	12:12	48-45	SUB OUT: LINDO JR., RICKY
	12:12		SUB IN: FERNANDO, BRUNO
SUB OUT: 2 HUNTER JR., ERIC	11:50	48-45	
SUB IN: 20 EASTERN, NOJEL	11:50		
	11:32	48-48	SUB OUT: FERNANDO, BRUNO
	11:32		SUB IN: LINDO JR., RICKY
SUB OUT: 3 EDWARDS, CARSEN	11:01	48-48	
SUB IN: 14 CLINE, RYAN	11:01		
SUB OUT: 32 HAARMS, MATT	11:01		
SUB IN: 50 WILLIAMS, TREVION	11:01		
	10:28	48-48	SUB OUT: AYALA, ERIC
	10:28		SUB IN: MORSELL, DARRYL
SUB OUT: 1 WHEELER, AARON	09:51	48-50	
SUB IN: 24 EIFERT, GRADY	09:51		
SUB OUT: 55 STEFANOVIC, SASHA	09:51		
SUB IN: 3 EDWARDS, CARSEN	09:51		
	07:50	52-55	SUB OUT: LINDO JR., RICKY
	07:50		SUB IN: FERNANDO, BRUNO
SUB OUT: 50 WILLIAMS, TREVION	07:29	52-55	
SUB IN: 32 HAARMS, MATT	07:29		
	06:25	52-57	SUB OUT: WIGGINS, AARON
	06:25		SUB IN: AYALA, ERIC
SUB OUT: 24 EIFERT, GRADY	04:28	52-60	
SUB IN: 1 WHEELER, AARON	04:28		
SUB OUT: 32 HAARMS, MATT	02:25	54-62	
SUB IN: 50 WILLIAMS, TREVION	02:25		
SUB OUT: 50 WILLIAMS, TREVION	00:59	56-67	
SUB IN: 2 HUNTER JR., ERIC	00:59		
	00:54	56-68	SUB OUT: SMITH, JALEN
	00:54		SUB IN: WIGGINS, AARON

Purdue 56, Maryland 70

Official Shot Chart
Purdue vs Maryland
PERIOD 1 Shots
 February 12, 2019 at XFINITY Center - College Park, Md.

Maryland

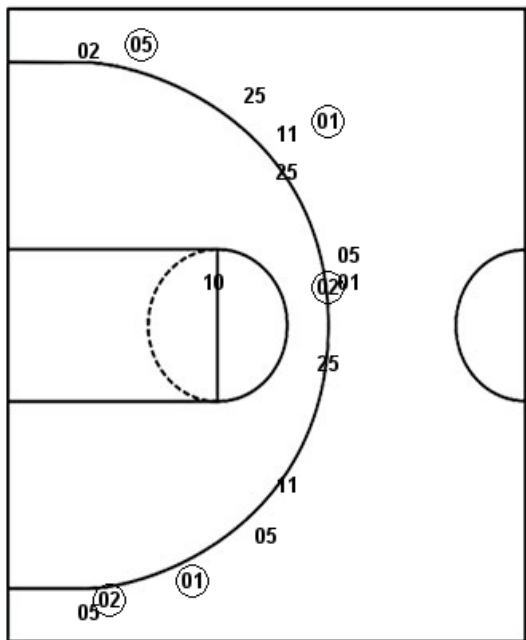
Purdue

Layups

25 25 25 (05) 11
 (05) (01) 14

Dunks

(25) (23) (11)

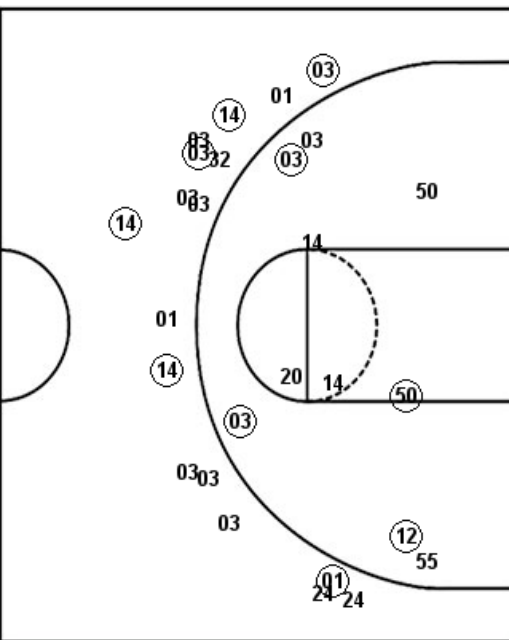


Layups

(03) 20 03 12 (20)
 32 (24)

Dunks

(03)



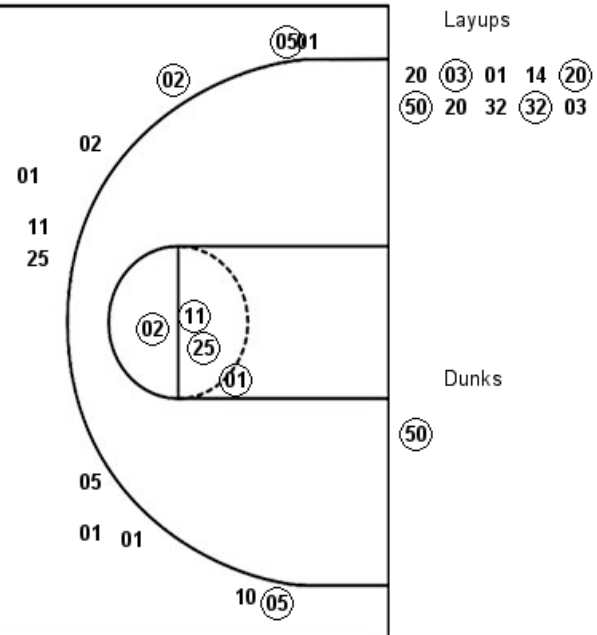
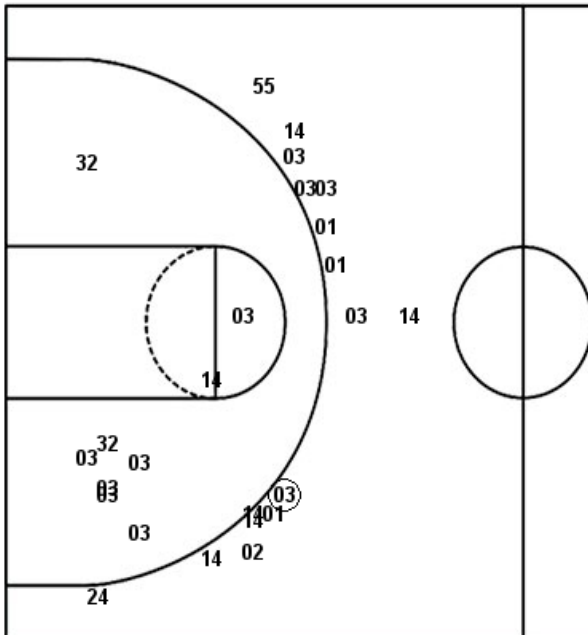
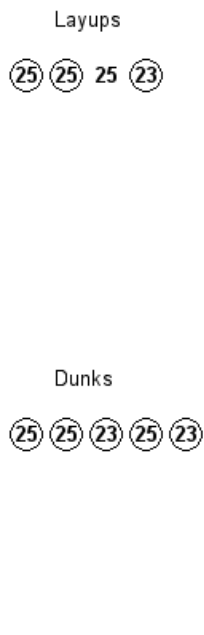
UMD : Period 1	Made	Att	Pct
Layups	3	8	37.5
Dunks	3	3	100.0
2PT Field Goals	6	12	50.0
3PT Field Goals	5	15	33.3
Total Field Goals	11	27	40.7

PUR : Period 1	Made	Att	Pct
Layups	3	7	42.9
Dunks	1	1	100.0
2PT Field Goals	8	18	44.4
3PT Field Goals	6	17	35.3
Total Field Goals	14	35	40.0

Official Shot Chart
Purdue vs Maryland
PERIOD 2 Shots
 February 12, 2019 at XFINITY Center - College Park, Md.

Maryland

Purdue

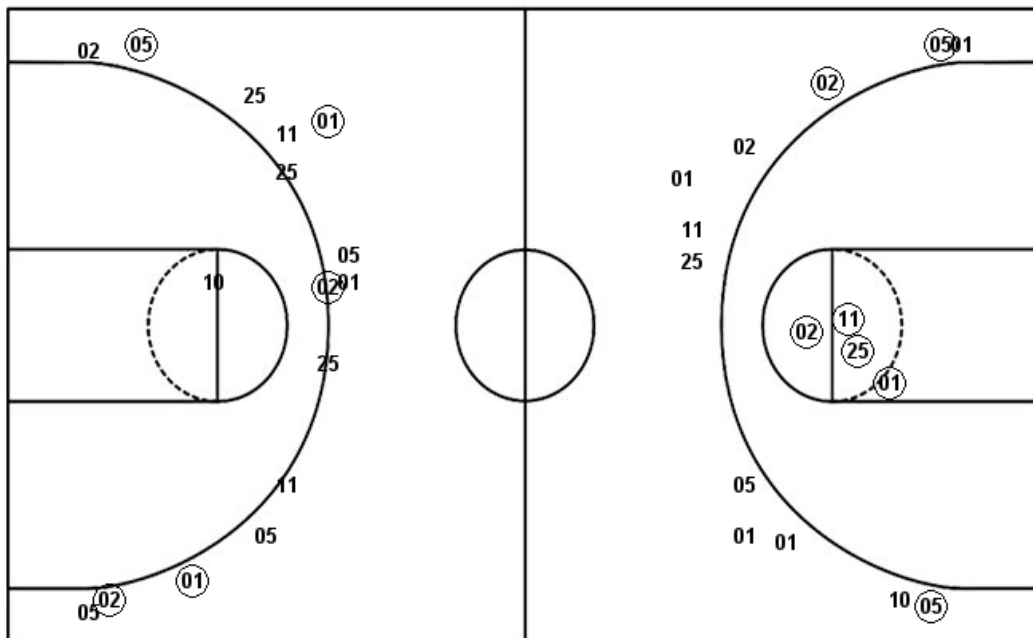


UMD : Period 2	Made	Att	Pct
Layups	3	4	75.0
Dunks	5	5	100.0
2PT Field Goals	12	13	92.3
3PT Field Goals	3	12	25.0
Total Field Goals	15	25	60.0

PUR : Period 2	Made	Att	Pct
Layups	4	10	40.0
Dunks	1	1	100.0
2PT Field Goals	5	20	25.0
3PT Field Goals	1	16	06.3
Total Field Goals	6	36	16.7

Official Shot Chart
Purdue vs Maryland
Maryland Team Shots
 February 12, 2019 at XFINITY Center - College Park, Md.

Layups



Layups

25 25 25 (05) 11
 (05) (01) 14 (25) (25)
 25 (23)

Dunks

Dunks

(25) (23) (11) (25) (25)
 (23) (25) (23)

UMD : Period 1	Made	Att	Pct
Layups	3	8	37.5
Dunks	3	3	100.0
2PT Field Goals	6	12	50.0
3PT Field Goals	5	15	33.3
Total Field Goals	11	27	40.7

UMD : Period 2	Made	Att	Pct
Layups	3	4	75.0
Dunks	5	5	100.0
2PT Field Goals	12	13	92.3
3PT Field Goals	3	12	25.0
Total Field Goals	15	25	60.0