

CURRENT SCORE



Purdue

84



Wisconsin

80

January 12, 2019 • Kohl Center (Ab Nicholas Court) - Madison, WI

STATISTICS

Official Box Score
Purdue vs Wisconsin
Game Totals at 00:00 (3rd Period)
January 12, 2019 at Kohl Center (Ab Nicholas Court) - Madison, WI

Purdue 84

No.	Player	S	Pts	FG	3FG	FT	OR	DR	TR	PF	A	TO	Blk	Stl	Min	+/-
03	Edwards, Carsen		36	10-26	6-14	10-14	0	4	4	2	1	4	0	1	43	6
14	Cline, Ryan		14	4-9	4-7	2-4	0	2	2	2	2	0	0	2	38	9
20	Eastern, Nojel		10	4-8	0-0	2-3	4	5	9	3	1	1	1	0	34	-3
24	Eifert, Grady		9	3-4	1-2	2-2	0	3	3	1	0	0	0	2	28	1
50	Williams, Trevion		9	4-11	0-0	1-6	7	4	11	4	3	1	1	3	26	-6
01	Wheeler, Aaron		2	1-2	0-1	0-0	3	1	4	1	3	0	0	1	17	3
02	Hunter Jr., Eric		0	0-2	0-1	0-0	0	0	0	2	1	0	0	1	13	4
32	Haarms, Matt		4	2-3	0-0	0-0	1	3	4	4	1	2	1	0	19	10
55	Stefanovic, Sasha		0	0-1	0-0	0-1	0	0	0	0	0	0	0	0	8	-4
	Team						2	0	2	0		0				
TOTALS			84	28-66	11-25	17-30	17	22	39	19	12	8	3	10	225	

Shooting By Period

Period	FG	FG%	3FG	3FG%	FT	FT%
1st Half	15-30	50%	5-8	63%	2-7	29%
2nd Half	12-30	40%	6-17	35%	7-11	64%
3rd Half	1-6	17%	0-0	0%	8-12	67%
Game	28-66	42.4%	11-25	44.0%	17-30	56.7%

Last FG: 3rd-04:15
Biggest Run: 9-0
Largest lead: By 11 at 1-08:15
Technical Fouls: #32 HAARMS (Class A) @ 1st - 07:24;

Wisconsin 80

No.	Player	S	Pts	FG	3FG	FT	OR	DR	TR	PF	A	TO	Blk	Stl	Min	+/-
00	Trice, D'mitrik		17	4-14	4-7	5-7	0	1	1	3	1	2	0	0	38	-4
21	Iverson, Khalil		7	3-7	0-0	1-2	4	1	5	5	1	2	0	2	31	2
22	Happ, Ethan		31	14-17	0-0	3-6	3	10	13	3	6	8	2	0	40	-1
34	Davison, Brad		13	5-8	3-3	0-2	0	3	3	4	2	0	0	0	39	2
35	Reuvers, Nate		5	2-4	1-2	0-0	1	1	2	2	2	1	1	0	18	0
01	Pritzl, Brevin		2	1-2	0-1	0-0	0	0	0	1	1	1	0	0	24	-12
02	Ford, Aleem		5	1-3	1-3	2-2	0	2	2	1	0	1	0	0	19	-5
23	King, Kobe		0	0-1	0-0	0-0	0	2	2	3	0	1	0	0	15	-2
	Team						0	4	4	0		1				
TOTALS			80	30-56	9-16	11-19	8	24	32	22	13	17	3	2	225	

Shooting By Period

Period	FG	FG%	3FG	3FG%	FT	FT%
1st Half	15-26	58%	1-3	33%	5-9	56%
2nd Half	14-26	54%	8-12	67%	2-3	67%
3rd Half	1-4	25%	0-1	00%	4-7	57%
Game	30-56	53.6%	9-16	56.3%	11-19	57.9%

Last FG: 3rd-02:03
Biggest Run: 10-0
Largest lead: By 4 at 2-13:50
Technical Fouls: None.

Game Notes:

Officials: D.J. Carstensen, Bill Ek, Courtney Green
Attendance: Not Counted Yet

Start Time: 02:07 AM
Conference Game;

Score	1st	2nd	3rd	TOT
PUR	37	37	10	84
WIS	36	38	6	80

PUR led for 30:34. WIS led for 4:52.
Game was tied for 9:36.
 Times tied: 22 Lead Changes: 9

Points from	PUR	WIS
In the Paint	24	36
Off Turns	20	13
2nd Chance	12	15
Fast Break	10	1
Bench	6	7

Official Box Score
Purdue vs Wisconsin
First Half Statistics Only
January 12, 2019 at Kohl Center (Ab Nicholas Court) - Madison, WI

Purdue 37

No.	Player	S	Pts	FG	3FG	FT	OR	DR	TR	PF	A	TO	Blk	Stl	Min	+/-
03	Edwards, Carsen		14	5-11	3-6	1-3	0	1	1	1	0	2	0	0	18	3
14	Cline, Ryan		3	1-2	1-1	0-0	0	0	0	2	1	0	0	0	13	6
20	Eastern, Nojel		7	3-6	0-0	1-1	1	2	3	0	1	0	1	0	15	-2
24	Eifert, Grady		3	1-1	1-1	0-0	0	2	2	0	0	0	0	1	10	0
50	Williams, Trevion		6	3-5	0-0	0-2	1	0	1	1	1	0	0	1	13	-4
01	Wheeler, Aaron		2	1-1	0-0	0-0	2	1	3	1	2	0	0	1	10	1
02	Hunter Jr., Eric		0	0-1	0-0	0-0	0	0	0	2	0	0	0	0	7	0
32	Haarms, Matt		2	1-2	0-0	0-0	0	2	2	2	1	1	1	0	7	5
55	Stefanovic, Sasha		0	0-1	0-0	0-1	0	0	0	0	0	0	0	0	8	-4
	Team						2	0	2	0		0				
TOTALS			37	15-30	5-8	2-7	6	8	14	9	6	3	2	3	100	

Shooting By Period

Period	FG	FG%	3FG	3FG%	FT	FT%
1st Half	15-30	50%	5-8	63%	2-7	29%
Game	28-66	42.4%	11-25	44.0%	17-30	56.7%

Last FG Half: PUR 2nd-00:45

Wisconsin 36

No.	Player	S	Pts	FG	3FG	FT	OR	DR	TR	PF	A	TO	Blk	Stl	Min	+/-
00	Trice, D'mitrik		5	1-4	1-1	2-2	0	1	1	2	1	1	0	0	17	-1
21	Iverson, Khalil		5	2-4	0-0	1-2	2	0	2	2	0	0	0	0	11	1
22	Happ, Ethan		18	9-10	0-0	0-1	2	6	8	0	3	3	1	0	17	4
34	Davison, Brad		2	1-2	0-0	0-2	0	0	0	0	1	0	0	0	17	6
35	Reuvers, Nate		2	1-3	0-1	0-0	0	1	1	1	1	1	1	0	11	-1
01	Pritzl, Brevin		2	1-1	0-0	0-0	0	0	0	1	0	0	0	0	7	-11
02	Ford, Aleem		2	0-1	0-1	2-2	0	1	1	0	0	0	0	0	10	-5
23	King, Kobe		0	0-1	0-0	0-0	0	2	2	2	0	1	0	0	10	2
	Team						0	1	1	0		0				
TOTALS			36	15-26	1-3	5-9	4	12	16	8	6	6	2	0	100	

Shooting By Period

Period	FG	FG%	3FG	3FG%	FT	FT%
1st Half	15-26	58%	1-3	33%	5-9	56%
Game	30-56	53.6%	9-16	56.3%	11-19	57.9%

Last FG Half: WIS 2nd-00:15

Game Notes:

Officials: D.J. Carstensen, Bill Ek, Courtney Green
Attendance: Not Counted Yet

Start Time: 02:07 AM
Conference Game;

Score	1st	2nd	3rd	TOT
PUR	37	37	10	84
WIS	36	38	6	80

Points from (This Period)	PUR	WIS
In the Paint	14	26
Off Turns	8	4
2nd Chance	5	7
Fast Break	3	0
Bench	4	4

Official Play-By-Play
Purdue vs Wisconsin
First Half
January 12, 2019 at Kohl Center (Ab Nicholas Court) - Madison, WI

Period 1

Starters:

Purdue: 3 EDWARDS,CARSEN; 14 CLINE,RYAN; 20 EASTERN,NOJEL; 24 EIFERT,GRADY; 50 WILLIAMS,TREVION;

Wisconsin: 0 TRICE,D'MITRIK; 21 IVERSON,KHALIL; 22 HAPP,ETHAN; 34 DAVISON,BRAD; 35 REUVERS,NATE;

Time	VISITORS: Purdue	Score	Margin	HOME: Wisconsin
19:33				TURNOVER (LOSTBALL) by HAPP,ETHAN
19:33	STEAL by EIFERT,GRADY			
19:25	MISSED LAYUP by EDWARDS,CARSEN			
19:25				BLOCK by REUVERS,NATE
19:25	REBOUND (OFF) by TEAM			
19:11	MISSED JUMPER by WILLIAMS,TREVION			
19:07				REBOUND (DEF) by HAPP,ETHAN
18:49		2-0	H 2	GOOD! LAYUP by IVERSON,KHALIL
18:49				ASSIST by REUVERS,NATE
18:25	GOOD! 3PTR by EIFERT,GRADY	2-3	V 1	
18:25	ASSIST by EASTERN,NOJEL			
18:11	FOUL (PERSONAL) by WILLIAMS,TREVION			
18:11	SUB OUT: WILLIAMS,TREVION			
18:11	SUB IN: HAARMS,MATT			
18:08		4-3	H 1	GOOD! LAYUP by IVERSON,KHALIL [PNT]
18:08				ASSIST by TRICE,D'MITRIK
17:53	GOOD! 3PTR by CLINE,RYAN	4-6	V 2	
17:30				MISSED JUMPER by REUVERS,NATE
17:24	REBOUND (DEF) by EIFERT,GRADY			
17:20	GOOD! JUMPER by EASTERN,NOJEL	4-8	V 4	
16:54		6-8	V 2	GOOD! JUMPER by HAPP,ETHAN [PNT]
16:36	GOOD! 3PTR by EDWARDS,CARSEN	6-11	V 5	
16:36	ASSIST by HAARMS,MATT			
16:05				MISSED JUMPER by TRICE,D'MITRIK
16:05	BLOCK by EASTERN,NOJEL			
15:55				REBOUND (OFF) by IVERSON,KHALIL
15:49				MISSED JUMPER by IVERSON,KHALIL
15:48	REBOUND (DEF) by HAARMS,MATT			
15:48	TURNOVER (DRIBBLING) by EDWARDS,CARSEN			
15:48	SUB OUT: EDWARDS,CARSEN			
15:48	SUB IN: STEFANOVIC,SASHA			
15:32				MISSED JUMPER by DAVISON,BRAD
15:27				REBOUND (OFF) by HAPP,ETHAN
15:26		8-11	V 3	GOOD! JUMPER by HAPP,ETHAN [PNT]
15:03	MISSED JUMPER by HAARMS,MATT			
14:59				REBOUND (DEF) by HAPP,ETHAN
14:42				MISSED 3PTR by REUVERS,NATE
14:36	REBOUND (DEF) by EIFERT,GRADY			
14:31	MISSED LAYUP by EASTERN,NOJEL			
14:30	REBOUND (OFF) by TEAM			
14:30				SUB OUT: IVERSON,KHALIL
14:30				SUB IN: KING,KOBE
14:30				SUB OUT: REUVERS,NATE
14:30				SUB IN: FORD,ALEEM
14:30	SUB OUT: EASTERN,NOJEL			
14:30	SUB IN: WILLIAMS,TREVION			
14:30	SUB OUT: HAARMS,MATT			
14:30	SUB IN: HUNTER JR.,ERIC			
14:27	MISSED JUMPER by CLINE,RYAN			
14:27				REBOUND (DEF) by TEAM
14:27	SUB OUT: EIFERT,GRADY			
14:27	SUB IN: WHEELER,AARON			
14:03		10-11	V 1	GOOD! JUMPER by HAPP,ETHAN [PNT]
13:39	GOOD! LAYUP by WILLIAMS,TREVION	10-13	V 3	
13:39	ASSIST by WHEELER,AARON			
13:18				TURNOVER (BADPASS) by HAPP,ETHAN
13:18				SUB OUT: DAVISON,BRAD
13:18				SUB IN: PRITZL,BREVIN
13:18				SUB OUT: HAPP,ETHAN
13:18				SUB IN: REUVERS,NATE
13:18	SUB OUT: CLINE,RYAN			
13:18	SUB IN: EDWARDS,CARSEN			
12:58	GOOD! DUNK by WILLIAMS,TREVION	10-15	V 5	
12:26				TURNOVER (BADPASS) by KING,KOBE
12:26	STEAL by WHEELER,AARON			
12:21	MISSED LAYUP by EDWARDS,CARSEN			
12:14	REBOUND (OFF) by WHEELER,AARON			
12:14	GOOD! LAYUP by WHEELER,AARON [FB]	10-17	V 7	
11:52				MISSED JUMPER by TRICE,D'MITRIK
11:48	REBOUND (DEF) by EDWARDS,CARSEN			
11:44	MISSED JUMPER by HUNTER JR.,ERIC			
11:40	REBOUND (OFF) by WHEELER,AARON			
11:40	GOOD! 3PTR by EDWARDS,CARSEN	10-20	V 10	
11:40	ASSIST by WHEELER,AARON			
11:40				TIMEOUT 30SEC

Time	VISITORS: Purdue	Score	Margin	HOME: Wisconsin
11:40				SUB OUT: TRICE,D'MITRIK
11:40				SUB IN: IVERSON,KHALIL
11:40				SUB OUT: KING,KOBE
11:40				SUB IN: HAPP,ETHAN
11:40				SUB OUT: REUVERS,NATE
11:40				SUB IN: DAVISON,BRAD
11:28		12-20	V 8	GOOD! LAYUP by PRITZL,BREVIN [PNT]
11:28				ASSIST by HAPP,ETHAN
11:10	FOUL (OFF) by EDWARDS,CARSEN			
11:10	TURNOVER (OFFENSIVE) by EDWARDS,CARSEN			
11:10	SUB OUT: HUNTER JR.,ERIC			
11:10	SUB IN: EASTERN,NOJEL			
10:57		14-20	V 6	GOOD! LAYUP by HAPP,ETHAN
10:28				FOUL (PERSONAL) by PRITZL,BREVIN
10:28	SUB OUT: WILLIAMS,TREVION			
10:28	SUB IN: CLINE,RYAN			
10:28	SUB OUT: STEFANOVIC,SASHA			
10:28	SUB IN: HAARMS,MATT			
10:20	GOOD! 3PTR by EDWARDS,CARSEN	14-23	V 9	
10:08				MISSED 3PTR by FORD,ALEEM
10:04	REBOUND (DEF) by WHEELER,AARON			
09:49	MISSED JUMPER by EASTERN,NOJEL			
09:44				REBOUND (DEF) by HAPP,ETHAN
09:41	FOUL (PERSONAL) by WHEELER,AARON			
09:41	SUB OUT: WHEELER,AARON			
09:41	SUB IN: EIFERT,GRADY			
09:41				SUB OUT: FORD,ALEEM
09:41				SUB IN: KING,KOBE
09:41				SUB OUT: DAVISON,BRAD
09:41				SUB IN: TRICE,D'MITRIK
09:29				MISSED JUMPER by TRICE,D'MITRIK
09:25				REBOUND (OFF) by IVERSON,KHALIL
09:24				MISSED LAYUP by IVERSON,KHALIL
09:24	BLOCK by HAARMS,MATT			
09:18	REBOUND (DEF) by HAARMS,MATT			
09:05	GOOD! JUMPER by EDWARDS,CARSEN	14-25	V 11	
08:37				MISSED JUMPER by HAPP,ETHAN
08:35				REBOUND (OFF) by HAPP,ETHAN
08:35		16-25	V 9	GOOD! LAYUP by HAPP,ETHAN [PNT]
08:35	FOUL (PERSONAL) by CLINE,RYAN			
08:35				SUB OUT: PRITZL,BREVIN
08:35				SUB IN: DAVISON,BRAD
08:35				MISSED FT by HAPP,ETHAN
08:33	REBOUND (DEF) by EASTERN,NOJEL			
08:25				FOUL (PERSONAL) by IVERSON,KHALIL
08:15	GOOD! LAYUP by HAARMS,MATT [PNT]	16-27	V 11	
07:45		18-27	V 9	GOOD! LAYUP by HAPP,ETHAN [PNT]
07:24	FOUL (OFF) by HAARMS,MATT			
07:24				
07:24	FOUL (TECH) by HAARMS,MATT			
07:24	SUB OUT: HAARMS,MATT			
07:24	SUB IN: WILLIAMS,TREVION			
07:24				SUB OUT: KING,KOBE
07:24				SUB IN: REUVERS,NATE
07:24				MISSED FT by DAVISON,BRAD
07:24				REBOUND (OFF) by TEAM
07:24				MISSED FT by DAVISON,BRAD
07:24				REBOUND (OFF) by TEAM
07:24	TURNOVER (OFFENSIVE) by HAARMS,MATT			
07:09		21-27	V 6	GOOD! 3PTR by TRICE,D'MITRIK
07:09				ASSIST by HAPP,ETHAN
06:42	MISSED JUMPER by WILLIAMS,TREVION			
06:37				REBOUND (DEF) by TRICE,D'MITRIK
06:37	FOUL (PERSONAL) by CLINE,RYAN			
06:37		22-27	V 5	GOOD! FT by IVERSON,KHALIL
06:37	SUB OUT: EIFERT,GRADY			
06:37	SUB IN: WHEELER,AARON			
06:37	SUB OUT: CLINE,RYAN			
06:37	SUB IN: HUNTER JR.,ERIC			
06:37				MISSED FT by IVERSON,KHALIL
06:37	REBOUND (DEF) by EASTERN,NOJEL			
06:18				FOUL (PERSONAL) by IVERSON,KHALIL
06:18	MISSED FT by EDWARDS,CARSEN			
06:18	REBOUND (OFF) by TEAM			
06:18	GOOD! FT by EDWARDS,CARSEN [FB]	22-28	V 6	
06:18	MISSED FT by EDWARDS,CARSEN			
06:18				REBOUND (DEF) by HAPP,ETHAN
06:14				SUB OUT: IVERSON,KHALIL
06:14				SUB IN: KING,KOBE
05:49		24-28	V 4	GOOD! JUMPER by HAPP,ETHAN [PNT]
05:34	MISSED 3PTR by EDWARDS,CARSEN			
05:32	REBOUND (OFF) by EASTERN,NOJEL			
05:32				FOUL (PERSONAL) by KING,KOBE
05:21	MISSED JUMPER by EASTERN,NOJEL			
05:18				REBOUND (DEF) by HAPP,ETHAN
05:10		26-28	V 2	GOOD! LAYUP by REUVERS,NATE [PNT]
05:10				ASSIST by HAPP,ETHAN

Time	VISITORS: Purdue	Score	Margin	HOME: Wisconsin
04:46	MISSED 3PTR by EDWARDS,CARSEN			
04:46	REBOUND (OFF) by WILLIAMS,TREVION			
04:46				FOUL (PERSONAL) by REUVERS,NATE
04:46				SUB OUT: HAPP,ETHAN
04:46				SUB IN: FORD,ALEEM
04:46	SUB OUT: EASTERN,NOJEL			
04:46	SUB IN: STEFANOVIC,SASHA			
04:35				FOUL (PERSONAL) by TRICE,D'MITRIK
04:35	MISSED FT by WILLIAMS,TREVION			
04:35	REBOUND (OFF) by TEAM			
04:35	MISSED FT by WILLIAMS,TREVION			
04:35				REBOUND (DEF) by KING,KOBE
04:15	FOUL (PERSONAL) by HUNTER JR.,ERIC			
04:15		27-28	V 1	GOOD! FT by TRICE,D'MITRIK
04:15		28-28	T	GOOD! FT by TRICE,D'MITRIK
04:01				FOUL (PERSONAL) by KING,KOBE
04:01	MISSED FT by STEFANOVIC,SASHA			
03:58				REBOUND (DEF) by REUVERS,NATE
03:47				TURNOVER (TRAVEL) by REUVERS,NATE
03:47				
03:47				SUB OUT: REUVERS,NATE
03:47				SUB IN: HAPP,ETHAN
03:28	MISSED JUMPER by STEFANOVIC,SASHA			
03:22				REBOUND (DEF) by FORD,ALEEM
03:14	FOUL (PERSONAL) by HUNTER JR.,ERIC			
03:14	SUB OUT: HUNTER JR.,ERIC			
03:14	SUB IN: EASTERN,NOJEL			
03:14		29-28	H 1	GOOD! FT by FORD,ALEEM
03:14		30-28	H 2	GOOD! FT by FORD,ALEEM
02:59	MISSED LAYUP by EDWARDS,CARSEN			
02:59				BLOCK by HAPP,ETHAN
02:55				REBOUND (DEF) by KING,KOBE
02:41		32-28	H 4	GOOD! LAYUP by HAPP,ETHAN
02:41				ASSIST by DAVISON,BRAD
02:39	TIMEOUT 30SEC			
02:39				SUB OUT: KING,KOBE
02:39				SUB IN: PRITZL,BREVIN
02:39	SUB OUT: STEFANOVIC,SASHA			
02:39	SUB IN: CLINE,RYAN			
02:20	GOOD! LAYUP by WILLIAMS,TREVION [PNT]	32-30	H 2	
02:10				TURNOVER (DRIBBLING) by TRICE,D'MITRIK
02:01	GOOD! JUMPER by EDWARDS,CARSEN	32-32	T	
02:01	ASSIST by CLINE,RYAN			
01:42		34-32	H 2	GOOD! LAYUP by HAPP,ETHAN
01:24	GOOD! LAYUP by EASTERN,NOJEL [PNT]	34-34	T	
01:24				FOUL (PERSONAL) by TRICE,D'MITRIK
01:24				SUB OUT: TRICE,D'MITRIK
01:24				SUB IN: KING,KOBE
01:24	SUB OUT: WHEELER,AARON			
01:24	SUB IN: EIFERT,GRADY			
01:24	SUB OUT: CLINE,RYAN			
01:24	SUB IN: STEFANOVIC,SASHA			
01:24	GOOD! FT by EASTERN,NOJEL	34-35	V 1	
01:02				TURNOVER (LOSTBALL) by HAPP,ETHAN
01:02	STEAL by WILLIAMS,TREVION			
01:02	SUB OUT: STEFANOVIC,SASHA			
01:02	SUB IN: CLINE,RYAN			
00:51	GOOD! DUNK by EASTERN,NOJEL	34-37	V 3	
00:51	ASSIST by WILLIAMS,TREVION			
00:29		36-37	V 1	GOOD! JUMPER by DAVISON,BRAD
00:06	MISSED 3PTR by EDWARDS,CARSEN			
00:02				REBOUND (DEF) by HAPP,ETHAN
00:00				MISSED JUMPER by KING,KOBE
00:00	REBOUND (DEF) by TEAM			

Purdue 37, Wisconsin 36

Points from (This Period)	PUR	WIS
In the Paint	14	26
Off Turns	8	4
2nd Chance	5	7
Fast Break	3	0
Bench	4	4

Official Box Score
Purdue vs Wisconsin
Second Half Statistics Only
January 12, 2019 at Kohl Center (Ab Nicholas Court) - Madison, WI

Purdue 37

No.	Player	S	Pts	FG	3FG	FT	OR	DR	TR	PF	A	TO	Blk	Stl	Min	+/-
03	Edwards, Carsen		19	5-13	3-8	6-7	0	2	2	1	1	2	0	1	20	-1
14	Cline, Ryan		9	3-7	3-6	0-0	0	2	2	0	1	0	0	0	20	-1
20	Eastern, Nojel		3	1-1	0-0	1-2	2	1	3	1	0	1	0	0	14	-5
24	Eifert, Grady		2	1-2	0-1	0-0	0	1	1	1	0	0	0	1	13	-3
50	Williams, Trevion		2	1-4	0-0	0-2	4	3	7	2	1	1	1	2	9	0
01	Wheeler, Aaron		0	0-1	0-1	0-0	1	0	1	0	1	0	0	0	7	2
02	Hunter Jr., Eric		0	0-1	0-1	0-0	0	0	0	0	1	0	0	1	6	4
32	Haarms, Matt		2	1-1	0-0	0-0	1	0	1	2	0	1	0	0	11	-1
55	Stefanovic, Sasha		0	0-0	0-0	0-0	0	0	0	0	0	0	0	0	0	0
	Team						0	0	0	0	0	0				
TOTALS			37	12-30	6-17	7-11	8	9	17	7	5	5	1	5	100	

Shooting By Period

Period	FG	FG%	3FG	3FG%	FT	FT%
2nd Half	12-30	40%	6-17	35%	7-11	64%
Game	28-66	42.4%	11-25	44.0%	17-30	56.7%

Last FG Half: PUR 3rd-04:15

Wisconsin 38

No.	Player	S	Pts	FG	3FG	FT	OR	DR	TR	PF	A	TO	Blk	Stl	Min	+/-
00	Trice, D'mitrik		9	3-8	3-5	0-0	0	0	0	0	0	1	0	0	17	1
21	Iverson, Khalil		2	1-3	0-0	0-0	2	0	2	2	1	2	0	2	16	1
22	Happ, Ethan		10	4-5	0-0	2-3	1	4	5	0	3	3	0	0	18	-1
34	Davison, Brad		11	4-6	3-3	0-0	0	2	2	4	1	0	0	0	17	0
35	Reuvers, Nate		3	1-1	1-1	0-0	1	0	1	1	1	0	0	0	7	1
01	Pritzl, Brevin		0	0-1	0-1	0-0	0	0	0	0	1	0	0	0	12	3
02	Ford, Aleem		3	1-2	1-2	0-0	0	1	1	1	0	1	0	0	10	0
23	King, Kobe		0	0-0	0-0	0-0	0	0	0	0	0	0	0	0	4	0
	Team						0	2	2	0	1					
TOTALS			38	14-26	8-12	2-3	4	9	13	8	7	8	0	2	100	

Shooting By Period

Period	FG	FG%	3FG	3FG%	FT	FT%
2nd Half	14-26	54%	8-12	67%	2-3	67%
Game	30-56	53.6%	9-16	56.3%	11-19	57.9%

Last FG Half: WIS 3rd-02:03

Game Notes:

Officials: D.J. Carstensen, Bill Ek, Courtney Green
Attendance: Not Counted Yet

Start Time: 02:07 AM
Conference Game;

Score	1st	2nd	3rd	TOT
PUR	37	37	10	84
WIS	36	38	6	80

Points from (This Period)	PUR	WIS
In the Paint	8	8
Off Turns	7	9
2nd Chance	7	8
Fast Break	5	0
Bench	2	3

Official Play-By-Play
Purdue vs Wisconsin
Second Half
January 12, 2019 at Kohl Center (Ab Nicholas Court) - Madison, WI

Period 2

Starters:

Purdue: 3 EDWARDS,CARSEN; 14 CLINE,RYAN; 20 EASTERN,NOJEL; 24 EIFERT,GRADY; 50 WILLIAMS,TREVION;

Wisconsin: 0 TRICE,D'MITRIK; 21 IVERSON,KHALIL; 22 HAPP,ETHAN; 34 DAVISON,BRAD; 35 REUVERS,NATE;

Time	VISITORS: Purdue	Score	Margin	HOME: Wisconsin
19:45				MISSED 3PTR by TRICE,D'MITRIK
19:41	REBOUND (DEF) by WILLIAMS,TREVION			
19:27	GOOD! 3PTR by EDWARDS,CARSEN	36-40	V 4	
19:27	ASSIST by WILLIAMS,TREVION			
19:06	FOUL (PERSONAL) by WILLIAMS,TREVION			
18:56				TURNOVER (LOSTBALL) by HAPP,ETHAN
18:56	STEAL by WILLIAMS,TREVION			
18:49	FOUL (OFF) by EASTERN,NOJEL			
18:49	TURNOVER (OFFENSIVE) by EASTERN,NOJEL			
18:38				TURNOVER (BADPASS) by IVERSON,KHALIL
18:38	STEAL by EDWARDS,CARSEN			
18:24	MISSED 3PTR by EIFERT,GRADY			
18:20				REBOUND (DEF) by DAVISON,BRAD
18:03				TURNOVER (BADPASS) by TRICE,D'MITRIK
17:43	TURNOVER (BADPASS) by WILLIAMS,TREVION			
17:43				STEAL by IVERSON,KHALIL
17:31		39-40	V 1	GOOD! 3PTR by REUVERS,NATE
17:31				ASSIST by DAVISON,BRAD
17:16	GOOD! JUMPER by EDWARDS,CARSEN	39-42	V 3	
16:57		42-42	T	GOOD! 3PTR by DAVISON,BRAD
16:57				ASSIST by REUVERS,NATE
16:43	MISSED 3PTR by EDWARDS,CARSEN			
16:40	REBOUND (OFF) by WILLIAMS,TREVION			
16:38	MISSED LAYUP by WILLIAMS,TREVION			
16:35				REBOUND (DEF) by HAPP,ETHAN
16:18				MISSED JUMPER by DAVISON,BRAD
16:13	REBOUND (DEF) by CLINE,RYAN			
15:52	GOOD! LAYUP by EIFERT,GRADY [PNT]	42-44	V 2	
15:31				MISSED LAYUP by IVERSON,KHALIL
15:28	REBOUND (DEF) by WILLIAMS,TREVION			
15:21	MISSED JUMPER by EDWARDS,CARSEN			
15:16				REBOUND (DEF) by HAPP,ETHAN
15:16				TIMEOUT 30SEC
15:10				SUB OUT: IVERSON,KHALIL
15:10				SUB IN: FORD,ALEEM
15:10				SUB OUT: REUVERS,NATE
15:10				SUB IN: KING,KOBE
15:10	SUB OUT: EASTERN,NOJEL			
15:10	SUB IN: HAARMS,MATT			
15:10	SUB OUT: WILLIAMS,TREVION			
15:10	SUB IN: HUNTER JR.,ERIC			
14:53		44-44	T	GOOD! JUMPER by DAVISON,BRAD
14:38	MISSED 3PTR by HUNTER JR.,ERIC			
14:34				REBOUND (DEF) by DAVISON,BRAD
14:22		47-44	H 3	GOOD! 3PTR by DAVISON,BRAD
14:22				ASSIST by HAPP,ETHAN
14:04				FOUL (PERSONAL) by DAVISON,BRAD
14:04				
14:04	GOOD! FT by EDWARDS,CARSEN	47-45	H 2	
14:04	MISSED FT by EDWARDS,CARSEN			
14:04	REBOUND (OFF) by TEAM			
14:04	GOOD! FT by EDWARDS,CARSEN	47-46	H 1	
14:04	SUB OUT: EIFERT,GRADY			
14:04	SUB IN: WHEELER,AARON			
13:50		50-46	H 4	GOOD! 3PTR by FORD,ALEEM
13:50				ASSIST by HAPP,ETHAN
13:28	GOOD! 3PTR by CLINE,RYAN	50-49	H 1	
13:28	ASSIST by HUNTER JR.,ERIC			
12:53		52-49	H 3	GOOD! LAYUP by HAPP,ETHAN [PNT]
12:31	MISSED 3PTR by EDWARDS,CARSEN			
12:28	REBOUND (OFF) by WHEELER,AARON			
12:27	GOOD! 3PTR by CLINE,RYAN	52-52	T	
12:27	ASSIST by WHEELER,AARON			
12:09				MISSED 3PTR by FORD,ALEEM
12:06	REBOUND (DEF) by EDWARDS,CARSEN			
11:58	GOOD! 3PTR by EDWARDS,CARSEN	52-55	V 3	
11:32				TURNOVER (BADPASS) by HAPP,ETHAN
11:32	STEAL by HUNTER JR.,ERIC			
11:32				SUB OUT: HAPP,ETHAN
11:32				SUB IN: REUVERS,NATE
11:32				SUB OUT: KING,KOBE
11:32				SUB IN: PRITZL,BREVIN
11:32				SUB OUT: DAVISON,BRAD
11:32				SUB IN: IVERSON,KHALIL
11:13	TURNOVER (BADPASS) by EDWARDS,CARSEN			
11:13				STEAL by IVERSON,KHALIL

Time	VISITORS: Purdue	Score	Margin	HOME: Wisconsin
10:58				TURNOVER (BADPASS) by IVERSON,KHALIL
10:42	MISSED 3PTR by WHEELER,AARON			
10:42	REBOUND (OFF) by TEAM			
10:42				FOUL (PERSONAL) by REUVERS,NATE
10:42				SUB OUT: REUVERS,NATE
10:42				SUB IN: HAPP,ETHAN
10:42	SUB OUT: HUNTER JR.,ERIC			
10:42	SUB IN: EASTERN,NOJEL			
10:35	FOUL (OFF) by HAARMS,MATT			
10:35	TURNOVER (OFFENSIVE) by HAARMS,MATT			
10:35	SUB OUT: HAARMS,MATT			
10:35	SUB IN: WILLIAMS,TREVION			
10:26		55-55	T	GOOD! 3PTR by TRICE,D'MITRIK
10:00	MISSED LAYUP by EDWARDS,CARSEN			
09:56	REBOUND (OFF) by EASTERN,NOJEL			
09:51	MISSED LAYUP by WILLIAMS,TREVION			
09:45	REBOUND (OFF) by WILLIAMS,TREVION			
09:40	MISSED LAYUP by WILLIAMS,TREVION			
09:35				REBOUND (DEF) by HAPP,ETHAN
09:33				MISSED JUMPER by TRICE,D'MITRIK
09:28	REBOUND (DEF) by CLINE,RYAN			
09:26	MISSED JUMPER by CLINE,RYAN			
09:25				REBOUND (DEF) by TEAM
09:25	FOUL (PERSONAL) by WILLIAMS,TREVION			
08:58				MISSED JUMPER by TRICE,D'MITRIK
08:54	REBOUND (DEF) by EDWARDS,CARSEN			
08:47	MISSED JUMPER by EDWARDS,CARSEN			
08:41	REBOUND (OFF) by EASTERN,NOJEL			
08:41	GOOD! LAYUP by EASTERN,NOJEL	55-57	V 2	
08:35				TURNOVER (DRIBBLING) by HAPP,ETHAN
08:35				SUB OUT: TRICE,D'MITRIK
08:35				SUB IN: DAVISON,BRAD
08:35	SUB OUT: WILLIAMS,TREVION			
08:35	SUB IN: HAARMS,MATT			
08:17	GOOD! JUMPER by EDWARDS,CARSEN	55-59	V 4	
07:54		57-59	V 2	GOOD! JUMPER by HAPP,ETHAN [PNT]
07:54	FOUL (PERSONAL) by HAARMS,MATT			
07:54				
07:54	SUB OUT: HAARMS,MATT			
07:54	SUB IN: WILLIAMS,TREVION			
07:54		58-59	V 1	GOOD! FT by HAPP,ETHAN
07:31				FOUL (PERSONAL) by DAVISON,BRAD
07:31	MISSED FT by EASTERN,NOJEL			
07:31	REBOUND (OFF) by TEAM			
07:31	SUB OUT: WHEELER,AARON			
07:31	SUB IN: EIFERT,GRADY			
07:31	GOOD! FT by EASTERN,NOJEL	58-60	V 2	
07:13				MISSED LAYUP by HAPP,ETHAN
07:13	BLOCK by WILLIAMS,TREVION			
07:08	REBOUND (DEF) by WILLIAMS,TREVION			
06:51				SUB OUT: HAPP,ETHAN
06:51				SUB IN: REUVERS,NATE
06:49	MISSED 3PTR by EDWARDS,CARSEN			
06:47	REBOUND (OFF) by WILLIAMS,TREVION			
06:47				FOUL (PERSONAL) by DAVISON,BRAD
06:28	MISSED 3PTR by CLINE,RYAN			
06:25	REBOUND (OFF) by WILLIAMS,TREVION			
06:25				FOUL (PERSONAL) by FORD,ALEEM
06:25	MISSED FT by WILLIAMS,TREVION			
06:25	REBOUND (OFF) by TEAM			
06:25				SUB OUT: REUVERS,NATE
06:25				SUB IN: HAPP,ETHAN
06:25	MISSED FT by WILLIAMS,TREVION			
06:23				REBOUND (DEF) by FORD,ALEEM
06:09				TURNOVER (BADPASS) by FORD,ALEEM
06:09	STEAL by WILLIAMS,TREVION			
05:59	GOOD! LAYUP by WILLIAMS,TREVION [PNT]	58-62	V 4	
05:59	ASSIST by EDWARDS,CARSEN			
05:45		60-62	V 2	GOOD! LAYUP by HAPP,ETHAN
05:17				FOUL (PERSONAL) by IVERSON,KHALIL
05:17				SUB OUT: FORD,ALEEM
05:17				SUB IN: TRICE,D'MITRIK
05:17	SUB OUT: WILLIAMS,TREVION			
05:17	SUB IN: HUNTER JR.,ERIC			
05:17	SUB OUT: EASTERN,NOJEL			
05:17	SUB IN: HAARMS,MATT			
05:07	GOOD! DUNK by HAARMS,MATT	60-64	V 4	
05:07	ASSIST by CLINE,RYAN			
04:55				TURNOVER (LOSTBALL) by HAPP,ETHAN
04:55	STEAL by EIFERT,GRADY			
04:49	GOOD! 3PTR by CLINE,RYAN [FB]	60-67	V 7	
04:43				TIMEOUT 30SEC
04:43				SUB OUT: HAPP,ETHAN
04:43				SUB IN: REUVERS,NATE
04:25				MISSED LAYUP by DAVISON,BRAD
04:19				REBOUND (OFF) by IVERSON,KHALIL
04:19				MISSED LAYUP by IVERSON,KHALIL

Time	VISITORS: Purdue	Score	Margin	HOME: Wisconsin
04:15				REBOUND (OFF) by REUVERS,NATE
04:13		62-67	V 5	GOOD! JUMPER by IVERSON,KHALIL
04:13				ASSIST by PRITZL,BREVIN
03:45	MISSED 3PTR by CLINE,RYAN			
03:45				REBOUND (DEF) by TEAM
03:45				
03:45	SUB OUT: HUNTER JR.,ERIC			
03:45	SUB IN: EASTERN,NOJEL			
03:45				SUB OUT: REUVERS,NATE
03:45				SUB IN: HAPP,ETHAN
03:24		64-67	V 3	GOOD! JUMPER by HAPP,ETHAN
03:01	FOUL (OFF) by EDWARDS,CARSEN			
03:01	TURNOVER (OFFENSIVE) by EDWARDS,CARSEN			
02:37				MISSED JUMPER by TRICE,D'MITRIK
02:33				REBOUND (OFF) by IVERSON,KHALIL
02:32		67-67	T	GOOD! 3PTR by DAVISON,BRAD
02:32				ASSIST by IVERSON,KHALIL
02:22	TIMEOUT 30SEC			
02:15	MISSED 3PTR by EDWARDS,CARSEN			
02:11	REBOUND (OFF) by HAARMS,MATT			
02:11				FOUL (PERSONAL) by DAVISON,BRAD
02:11	GOOD! FT by EDWARDS,CARSEN	67-68	V 1	
02:11	GOOD! FT by EDWARDS,CARSEN	67-69	V 2	
01:59	FOUL (PERSONAL) by EIFERT,GRADY			
01:59		68-69	V 1	GOOD! FT by HAPP,ETHAN
01:59				MISSED FT by HAPP,ETHAN
01:57	REBOUND (DEF) by EASTERN,NOJEL			
01:31	MISSED 3PTR by CLINE,RYAN			
01:27				REBOUND (DEF) by HAPP,ETHAN
01:12				MISSED 3PTR by TRICE,D'MITRIK
01:08	REBOUND (DEF) by EIFERT,GRADY			
00:45	GOOD! 3PTR by EDWARDS,CARSEN	68-72	V 4	
00:30				TIMEOUT TEAM
00:27				MISSED 3PTR by PRITZL,BREVIN
00:23				REBOUND (OFF) by HAPP,ETHAN
00:22		71-72	V 1	GOOD! 3PTR by TRICE,D'MITRIK
00:22				ASSIST by HAPP,ETHAN
00:22				FOUL (PERSONAL) by IVERSON,KHALIL
00:22				SUB OUT: IVERSON,KHALIL
00:22				SUB IN: KING,KOBE
00:22	GOOD! FT by EDWARDS,CARSEN [FB]	71-73	V 2	
00:22	GOOD! FT by EDWARDS,CARSEN [FB]	71-74	V 3	
00:15		74-74	T	GOOD! 3PTR by TRICE,D'MITRIK
00:03	MISSED 3PTR by EDWARDS,CARSEN			
00:03				REBOUND (DEF) by TEAM

Purdue 74, Wisconsin 74

Points from (This Period)	PUR	WIS
In the Paint	8	8
Off Turns	7	9
2nd Chance	7	8
Fast Break	5	0
Bench	2	3

Official Play-By-Play
Purdue vs Wisconsin
Overtime
January 12, 2019 at Kohl Center (Ab Nicholas Court) - Madison, WI

Period 3

Starters:

Purdue: 3 EDWARDS,CARSEN; 14 CLINE,RYAN; 20 EASTERN,NOJEL; 24 EIFERT,GRADY; 50 WILLIAMS,TREVION;

Wisconsin: 0 TRICE,D'MITRIK; 21 IVERSON,KHALIL; 22 HAPP,ETHAN; 34 DAVISON,BRAD; 35 REUVERS,NATE;

Time	VISITORS: Purdue	Score	Margin	HOME: Wisconsin
05:00				SUB OUT: KING,KOBE
05:00				SUB IN: IVERSON,KHALIL
04:45				TURNOVER (TRAVEL) by HAPP,ETHAN
04:15	GOOD! LAYUP by EIFERT,GRADY [PNT]	74-76	V 2	
04:15	ASSIST by WILLIAMS,TREVION			
03:51	FOUL (PERSONAL) by WILLIAMS,TREVION			
03:51				MISSED FT by HAPP,ETHAN
03:51				REBOUND (OFF) by TEAM
03:51		75-76	V 1	GOOD! FT by HAPP,ETHAN
03:28				FOUL (PERSONAL) by HAPP,ETHAN
03:28	MISSED FT by WILLIAMS,TREVION			
03:28	REBOUND (OFF) by TEAM			
03:28	GOOD! FT by WILLIAMS,TREVION	75-77	V 2	
03:15	FOUL (PERSONAL) by EASTERN,NOJEL			
03:15		76-77	V 1	GOOD! FT by TRICE,D'MITRIK
03:15		77-77	T	GOOD! FT by TRICE,D'MITRIK
03:15				MISSED FT by TRICE,D'MITRIK
03:12	REBOUND (DEF) by WILLIAMS,TREVION			
03:00	MISSED LAYUP by EDWARDS,CARSEN			
02:59	REBOUND (OFF) by WILLIAMS,TREVION			
02:59	MISSED LAYUP by WILLIAMS,TREVION			
02:59				REBOUND (DEF) by TEAM
02:38				MISSED LAYUP by HAPP,ETHAN
02:33	REBOUND (DEF) by EASTERN,NOJEL			
02:21	MISSED JUMPER by EDWARDS,CARSEN			
02:17	REBOUND (OFF) by EASTERN,NOJEL			
02:15	MISSED LAYUP by EASTERN,NOJEL			
02:12	REBOUND (OFF) by WILLIAMS,TREVION			
02:11	MISSED LAYUP by WILLIAMS,TREVION			
02:11				BLOCK by HAPP,ETHAN
02:05				REBOUND (DEF) by DAVISON,BRAD
02:03		79-77	H 2	GOOD! LAYUP by HAPP,ETHAN
02:00	TIMEOUT 30SEC			
02:00	SUB OUT: WILLIAMS,TREVION			
02:00	SUB IN: HAARMS,MATT			
01:41				FOUL (PERSONAL) by TRICE,D'MITRIK
01:41	MISSED FT by EDWARDS,CARSEN			
01:41	REBOUND (OFF) by TEAM			
01:41	GOOD! FT by EDWARDS,CARSEN	79-78	H 1	
01:17				TURNOVER (BADPASS) by PRITZL,BREVIN
01:17	STEAL by CLINE,RYAN			
01:17				FOUL (PERSONAL) by HAPP,ETHAN
01:17	GOOD! FT by CLINE,RYAN	79-79	T	
01:17	MISSED FT by CLINE,RYAN			
01:17				REBOUND (DEF) by IVERSON,KHALIL
00:51				TURNOVER (BADPASS) by HAPP,ETHAN
00:51	STEAL by CLINE,RYAN			
00:46	TIMEOUT TEAM			
00:38				FOUL (PERSONAL) by IVERSON,KHALIL
00:38				SUB OUT: IVERSON,KHALIL
00:38				SUB IN: KING,KOBE
00:38	GOOD! FT by EIFERT,GRADY	79-80	V 1	
00:38	GOOD! FT by EIFERT,GRADY	79-81	V 2	
00:25				MISSED LAYUP by TRICE,D'MITRIK
00:21	REBOUND (DEF) by EASTERN,NOJEL			
00:15				FOUL (PERSONAL) by KING,KOBE
00:15	MISSED FT by CLINE,RYAN			
00:15	REBOUND (OFF) by TEAM			
00:15	GOOD! FT by CLINE,RYAN	79-82	V 3	
00:09	FOUL (PERSONAL) by EASTERN,NOJEL			
00:09		80-82	V 2	GOOD! FT by TRICE,D'MITRIK [FB]
00:09				MISSED FT by TRICE,D'MITRIK
00:08	REBOUND (DEF) by EDWARDS,CARSEN			
00:08				FOUL (PERSONAL) by HAPP,ETHAN
00:08	GOOD! FT by EDWARDS,CARSEN [FB]	80-83	V 3	
00:08	GOOD! FT by EDWARDS,CARSEN [FB]	80-84	V 4	
00:02				MISSED 3PTR by TRICE,D'MITRIK
00:00	REBOUND (DEF) by HAARMS,MATT			

Purdue 84, Wisconsin 80

Points from (This Period)	PUR	WIS
In the Paint	2	2
Off Turns	5	0
2nd Chance	0	0
Fast Break	2	1
Bench	0	0

Official Scoring/Possession Reference Chart
Purdue vs Wisconsin
Period 1
January 12, 2019 at Kohl Center (Ab Nicholas Court) - Madison, WI

Period 1

Starters:

Purdue: 3 EDWARDS,CARSEN; 14 CLINE,RYAN; 20 EASTERN,NOJEL; 24 EIFERT,GRADY; 50 WILLIAMS,TREVION;
Wisconsin: 0 TRICE,D'MITRIK; 21 IVERSON,KHALIL; 22 HAPP,ETHAN; 34 DAVISON,BRAD; 35 REUVERS,NATE;

Time	VISITORS: Purdue	Score	Margin	HOME: Wisconsin
18:49		2-0	H 2	GOOD! LAYUP by IVERSON,KHALIL
18:25	GOOD! 3PTR by EIFERT,GRADY	2-3	V 1	
18:08		4-3	H 1	GOOD! LAYUP by IVERSON,KHALIL [PNT]
17:53	GOOD! 3PTR by CLINE,RYAN	4-6	V 2	
17:20	GOOD! JUMPER by EASTERN,NOJEL	4-8	V 4	
16:54		6-8	V 2	GOOD! JUMPER by HAPP,ETHAN [PNT]
16:36	GOOD! 3PTR by EDWARDS,CARSEN	6-11	V 5	
15:26		8-11	V 3	GOOD! JUMPER by HAPP,ETHAN [PNT]
14:03		10-11	V 1	GOOD! JUMPER by HAPP,ETHAN [PNT]
13:39	GOOD! LAYUP by WILLIAMS,TREVION	10-13	V 3	
12:58	GOOD! DUNK by WILLIAMS,TREVION	10-15	V 5	
12:14	GOOD! LAYUP by WHEELER,AARON [FB]	10-17	V 7	
11:40	GOOD! 3PTR by EDWARDS,CARSEN	10-20	V 10	
11:28		12-20	V 8	GOOD! LAYUP by PRITZL,BREVIN [PNT]
10:57		14-20	V 6	GOOD! LAYUP by HAPP,ETHAN
10:20	GOOD! 3PTR by EDWARDS,CARSEN	14-23	V 9	
09:05	GOOD! JUMPER by EDWARDS,CARSEN	14-25	V 11	
08:35		16-25	V 9	GOOD! LAYUP by HAPP,ETHAN [PNT]
08:15	GOOD! LAYUP by HAARMS,MATT [PNT]	16-27	V 11	
07:45		18-27	V 9	GOOD! LAYUP by HAPP,ETHAN [PNT]
07:09		21-27	V 6	GOOD! 3PTR by TRICE,D'MITRIK
06:37		22-27	V 5	GOOD! FT by IVERSON,KHALIL
06:18	GOOD! FT by EDWARDS,CARSEN [FB]	22-28	V 6	
05:49		24-28	V 4	GOOD! JUMPER by HAPP,ETHAN [PNT]
05:10		26-28	V 2	GOOD! LAYUP by REUVERS,NATE [PNT]
04:15		27-28	V 1	GOOD! FT by TRICE,D'MITRIK
04:15		28-28	T	GOOD! FT by TRICE,D'MITRIK
03:14		29-28	H 1	GOOD! FT by FORD,ALEEM
03:14		30-28	H 2	GOOD! FT by FORD,ALEEM
02:41		32-28	H 4	GOOD! LAYUP by HAPP,ETHAN
02:20	GOOD! LAYUP by WILLIAMS,TREVION [PNT]	32-30	H 2	
02:01	GOOD! JUMPER by EDWARDS,CARSEN	32-32	T	
01:42		34-32	H 2	GOOD! LAYUP by HAPP,ETHAN
01:24	GOOD! LAYUP by EASTERN,NOJEL [PNT]	34-34	T	
01:24	GOOD! FT by EASTERN,NOJEL	34-35	V 1	
00:51	GOOD! DUNK by EASTERN,NOJEL	34-37	V 3	
00:29		36-37	V 1	GOOD! JUMPER by DAVISON,BRAD

Purdue 37, Wisconsin 36

Official Scoring/Possession Reference Chart
Purdue vs Wisconsin
Period 2
January 12, 2019 at Kohl Center (Ab Nicholas Court) - Madison, WI

Period 2

Starters:

Purdue: 3 EDWARDS,CARSEN; 14 CLINE,RYAN; 20 EASTERN,NOJEL; 24 EIFERT,GRADY; 50 WILLIAMS,TREVION;

Wisconsin: 0 TRICE,D'MITRIK; 21 IVERSON,KHALIL; 22 HAPP,ETHAN; 34 DAVISON,BRAD; 35 REUVERS,NATE;

Time	VISITORS: Purdue	Score	Margin	HOME: Wisconsin
19:27	GOOD! 3PTR by EDWARDS,CARSEN	36-40	V 4	
17:31		39-40	V 1	GOOD! 3PTR by REUVERS,NATE
17:16	GOOD! JUMPER by EDWARDS,CARSEN	39-42	V 3	
16:57		42-42	T	GOOD! 3PTR by DAVISON,BRAD
15:52	GOOD! LAYUP by EIFERT,GRADY [PNT]	42-44	V 2	
14:53		44-44	T	GOOD! JUMPER by DAVISON,BRAD
14:22		47-44	H 3	GOOD! 3PTR by DAVISON,BRAD
14:04	GOOD! FT by EDWARDS,CARSEN	47-45	H 2	
14:04	GOOD! FT by EDWARDS,CARSEN	47-46	H 1	
13:50		50-46	H 4	GOOD! 3PTR by FORD,ALEEM
13:28	GOOD! 3PTR by CLINE,RYAN	50-49	H 1	
12:53		52-49	H 3	GOOD! LAYUP by HAPP,ETHAN [PNT]
12:27	GOOD! 3PTR by CLINE,RYAN	52-52	T	
11:58	GOOD! 3PTR by EDWARDS,CARSEN	52-55	V 3	
10:26		55-55	T	GOOD! 3PTR by TRICE,D'MITRIK
08:41	GOOD! LAYUP by EASTERN,NOJEL	55-57	V 2	
08:17	GOOD! JUMPER by EDWARDS,CARSEN	55-59	V 4	
07:54		57-59	V 2	GOOD! JUMPER by HAPP,ETHAN [PNT]
07:54		58-59	V 1	GOOD! FT by HAPP,ETHAN
07:31	GOOD! FT by EASTERN,NOJEL	58-60	V 2	
05:59	GOOD! LAYUP by WILLIAMS,TREVION [PNT]	58-62	V 4	
05:45		60-62	V 2	GOOD! LAYUP by HAPP,ETHAN
05:07	GOOD! DUNK by HAARMS,MATT	60-64	V 4	
04:49	GOOD! 3PTR by CLINE,RYAN [FB]	60-67	V 7	
04:13		62-67	V 5	GOOD! JUMPER by IVERSON,KHALIL
03:24		64-67	V 3	GOOD! JUMPER by HAPP,ETHAN
02:32		67-67	T	GOOD! 3PTR by DAVISON,BRAD
02:11	GOOD! FT by EDWARDS,CARSEN	67-68	V 1	
02:11	GOOD! FT by EDWARDS,CARSEN	67-69	V 2	
01:59		68-69	V 1	GOOD! FT by HAPP,ETHAN
00:45	GOOD! 3PTR by EDWARDS,CARSEN	68-72	V 4	
00:22		71-72	V 1	GOOD! 3PTR by TRICE,D'MITRIK
00:22	GOOD! FT by EDWARDS,CARSEN [FB]	71-73	V 2	
00:22	GOOD! FT by EDWARDS,CARSEN [FB]	71-74	V 3	
00:15		74-74	T	GOOD! 3PTR by TRICE,D'MITRIK

Purdue 74, Wisconsin 74

Official Scoring/Possession Reference Chart
Purdue vs Wisconsin
Period 3
January 12, 2019 at Kohl Center (Ab Nicholas Court) - Madison, WI

Period 3

Starters:

Purdue: 3 EDWARDS,CARSEN; 14 CLINE,RYAN; 20 EASTERN,NOJEL; 24 EIFERT,GRADY; 50 WILLIAMS,TREVION;
Wisconsin: 0 TRICE,D'MITRIK; 21 IVERSON,KHALIL; 22 HAPP,ETHAN; 34 DAVISON,BRAD; 35 REUVERS,NATE;

Time	VISITORS: Purdue	Score	Margin	HOME: Wisconsin
04:15	GOOD! LAYUP by EIFERT,GRADY [PNT]	74-76	V 2	
03:51		75-76	V 1	GOOD! FT by HAPP,ETHAN
03:28	GOOD! FT by WILLIAMS,TREVION	75-77	V 2	
03:15		76-77	V 1	GOOD! FT by TRICE,D'MITRIK
03:15		77-77	T	GOOD! FT by TRICE,D'MITRIK
02:03		79-77	H 2	GOOD! LAYUP by HAPP,ETHAN
01:41	GOOD! FT by EDWARDS,CARSEN	79-78	H 1	
01:17	GOOD! FT by CLINE,RYAN	79-79	T	
00:38	GOOD! FT by EIFERT,GRADY	79-80	V 1	
00:38	GOOD! FT by EIFERT,GRADY	79-81	V 2	
00:15	GOOD! FT by CLINE,RYAN	79-82	V 3	
00:09		80-82	V 2	GOOD! FT by TRICE,D'MITRIK [FB]
00:08	GOOD! FT by EDWARDS,CARSEN [FB]	80-83	V 3	
00:08	GOOD! FT by EDWARDS,CARSEN [FB]	80-84	V 4	

Purdue 84, Wisconsin 80

Official Substitutions Log
Purdue vs Wisconsin
Period 1
January 12, 2019 at Kohl Center (Ab Nicholas Court) - Madison, WI

VISITORS: Purdue	Time	Score	HOME: Wisconsin
3 EDWARDS, CARSEN			0 TRICE, D'MITRIK
14 CLINE, RYAN			21 IVERSON, KHALIL
20 EASTERN, NOJEL			22 HAPP, ETHAN
24 EIFERT, GRADY			34 DAVISON, BRAD
50 WILLIAMS, TREVION			35 REUVERS, NATE
SUB OUT: 50 WILLIAMS, TREVION	18:11	3-2	
SUB IN: 32 HAARMS, MATT	18:11		
SUB OUT: 3 EDWARDS, CARSEN	15:48	11-6	
SUB IN: 55 STEFANOVIC, SASHA	15:48		
	14:30	11-8	SUB OUT: IVERSON, KHALIL
	14:30		SUB IN: KING, KOBE
	14:30		SUB OUT: REUVERS, NATE
	14:30		SUB IN: FORD, ALEEM
SUB OUT: 20 EASTERN, NOJEL	14:30		
SUB IN: 50 WILLIAMS, TREVION	14:30		
SUB OUT: 32 HAARMS, MATT	14:30		
SUB IN: 2 HUNTER JR., ERIC	14:30		
SUB OUT: 24 EIFERT, GRADY	14:27	11-8	
SUB IN: 1 WHEELER, AARON	14:27		
	13:18	13-10	SUB OUT: DAVISON, BRAD
	13:18		SUB IN: PRITZL, BREVIN
	13:18		SUB OUT: HAPP, ETHAN
	13:18		SUB IN: REUVERS, NATE
SUB OUT: 14 CLINE, RYAN	13:18		
SUB IN: 3 EDWARDS, CARSEN	13:18		
	11:40	20-10	SUB OUT: TRICE, D'MITRIK
	11:40		SUB IN: IVERSON, KHALIL
	11:40		SUB OUT: KING, KOBE
	11:40		SUB IN: HAPP, ETHAN
	11:40		SUB OUT: REUVERS, NATE
	11:40		SUB IN: DAVISON, BRAD
SUB OUT: 2 HUNTER JR., ERIC	11:10	20-12	
SUB IN: 20 EASTERN, NOJEL	11:10		
SUB OUT: 50 WILLIAMS, TREVION	10:28	20-14	
SUB IN: 14 CLINE, RYAN	10:28		
SUB OUT: 55 STEFANOVIC, SASHA	10:28		
SUB IN: 32 HAARMS, MATT	10:28		
SUB OUT: 1 WHEELER, AARON	09:41	23-14	
SUB IN: 24 EIFERT, GRADY	09:41		
	09:41		SUB OUT: FORD, ALEEM
	09:41		SUB IN: KING, KOBE
	09:41		SUB OUT: DAVISON, BRAD
	09:41		SUB IN: TRICE, D'MITRIK
	08:35	25-16	SUB OUT: PRITZL, BREVIN
	08:35		SUB IN: DAVISON, BRAD
SUB OUT: 32 HAARMS, MATT	07:24	27-18	
SUB IN: 50 WILLIAMS, TREVION	07:24		
	07:24		SUB OUT: KING, KOBE
	07:24		SUB IN: REUVERS, NATE
SUB OUT: 24 EIFERT, GRADY	06:37	27-22	
SUB IN: 1 WHEELER, AARON	06:37		
SUB OUT: 14 CLINE, RYAN	06:37		
SUB IN: 2 HUNTER JR., ERIC	06:37		
	06:14	28-22	SUB OUT: IVERSON, KHALIL
	06:14		SUB IN: KING, KOBE
	04:46	28-26	SUB OUT: HAPP, ETHAN
	04:46		SUB IN: FORD, ALEEM
SUB OUT: 20 EASTERN, NOJEL	04:46		
SUB IN: 55 STEFANOVIC, SASHA	04:46		
	03:47	28-28	SUB OUT: REUVERS, NATE
	03:47		SUB IN: HAPP, ETHAN
SUB OUT: 2 HUNTER JR., ERIC	03:14	28-28	
SUB IN: 20 EASTERN, NOJEL	03:14		
	02:39	28-32	SUB OUT: KING, KOBE
	02:39		SUB IN: PRITZL, BREVIN
SUB OUT: 55 STEFANOVIC, SASHA	02:39		
SUB IN: 14 CLINE, RYAN	02:39		
	01:24	34-34	SUB OUT: TRICE, D'MITRIK
	01:24		SUB IN: KING, KOBE
SUB OUT: 1 WHEELER, AARON	01:24		
SUB IN: 24 EIFERT, GRADY	01:24		
SUB OUT: 14 CLINE, RYAN	01:24		
SUB IN: 55 STEFANOVIC, SASHA	01:24		
SUB OUT: 55 STEFANOVIC, SASHA	01:02	35-34	
SUB IN: 14 CLINE, RYAN	01:02		

Purdue 37, Wisconsin 36

**Official Substitutions Log
Purdue vs Wisconsin
Period 2
January 12, 2019 at Kohl Center (Ab Nicholas Court) - Madison, WI**

VISITORS: Purdue	Time	Score	HOME: Wisconsin
3 EDWARDS, CARSEN			0 TRICE, D'MITRIK
14 CLINE, RYAN			21 IVERSON, KHALIL
20 EASTERN, NOJEL			22 HAPP, ETHAN
24 EIFERT, GRADY			34 DAVISON, BRAD
50 WILLIAMS, TREVION			35 REUVERS, NATE
	15:10	44-42	SUB OUT: IVERSON, KHALIL
	15:10		SUB IN: FORD, ALEEM
	15:10		SUB OUT: REUVERS, NATE
	15:10		SUB IN: KING, KOBE
SUB OUT: 20 EASTERN, NOJEL	15:10		
SUB IN: 32 HAARMS, MATT	15:10		
SUB OUT: 50 WILLIAMS, TREVION	15:10		
SUB IN: 2 HUNTER JR., ERIC	15:10		
SUB OUT: 24 EIFERT, GRADY	14:04	46-47	
SUB IN: 1 WHEELER, AARON	14:04		
	11:32	55-52	SUB OUT: HAPP, ETHAN
	11:32		SUB IN: REUVERS, NATE
	11:32		SUB OUT: KING, KOBE
	11:32		SUB IN: PRITZL, BREVIN
	11:32		SUB OUT: DAVISON, BRAD
	11:32		SUB IN: IVERSON, KHALIL
	10:42	55-52	SUB OUT: REUVERS, NATE
	10:42		SUB IN: HAPP, ETHAN
SUB OUT: 2 HUNTER JR., ERIC	10:42		
SUB IN: 20 EASTERN, NOJEL	10:42		
SUB OUT: 32 HAARMS, MATT	10:35	55-52	
SUB IN: 50 WILLIAMS, TREVION	10:35		
	08:35	57-55	SUB OUT: TRICE, D'MITRIK
	08:35		SUB IN: DAVISON, BRAD
SUB OUT: 50 WILLIAMS, TREVION	08:35		
SUB IN: 32 HAARMS, MATT	08:35		
SUB OUT: 32 HAARMS, MATT	07:54	59-57	
SUB IN: 50 WILLIAMS, TREVION	07:54		
SUB OUT: 1 WHEELER, AARON	07:31	59-58	
SUB IN: 24 EIFERT, GRADY	07:31		
	06:51	60-58	SUB OUT: HAPP, ETHAN
	06:51		SUB IN: REUVERS, NATE
	06:25	60-58	SUB OUT: REUVERS, NATE
	06:25		SUB IN: HAPP, ETHAN
	05:17	62-60	SUB OUT: FORD, ALEEM
	05:17		SUB IN: TRICE, D'MITRIK
SUB OUT: 50 WILLIAMS, TREVION	05:17		
SUB IN: 2 HUNTER JR., ERIC	05:17		
SUB OUT: 20 EASTERN, NOJEL	05:17		
SUB IN: 32 HAARMS, MATT	05:17		
	04:43	67-60	SUB OUT: HAPP, ETHAN
	04:43		SUB IN: REUVERS, NATE
SUB OUT: 2 HUNTER JR., ERIC	03:45	67-62	
SUB IN: 20 EASTERN, NOJEL	03:45		
	03:45		SUB OUT: REUVERS, NATE
	03:45		SUB IN: HAPP, ETHAN
	00:22	72-71	SUB OUT: IVERSON, KHALIL
	00:22		SUB IN: KING, KOBE

Purdue 74, Wisconsin 74

Official Substitutions Log
Purdue vs Wisconsin
Period 3
January 12, 2019 at Kohl Center (Ab Nicholas Court) - Madison, WI

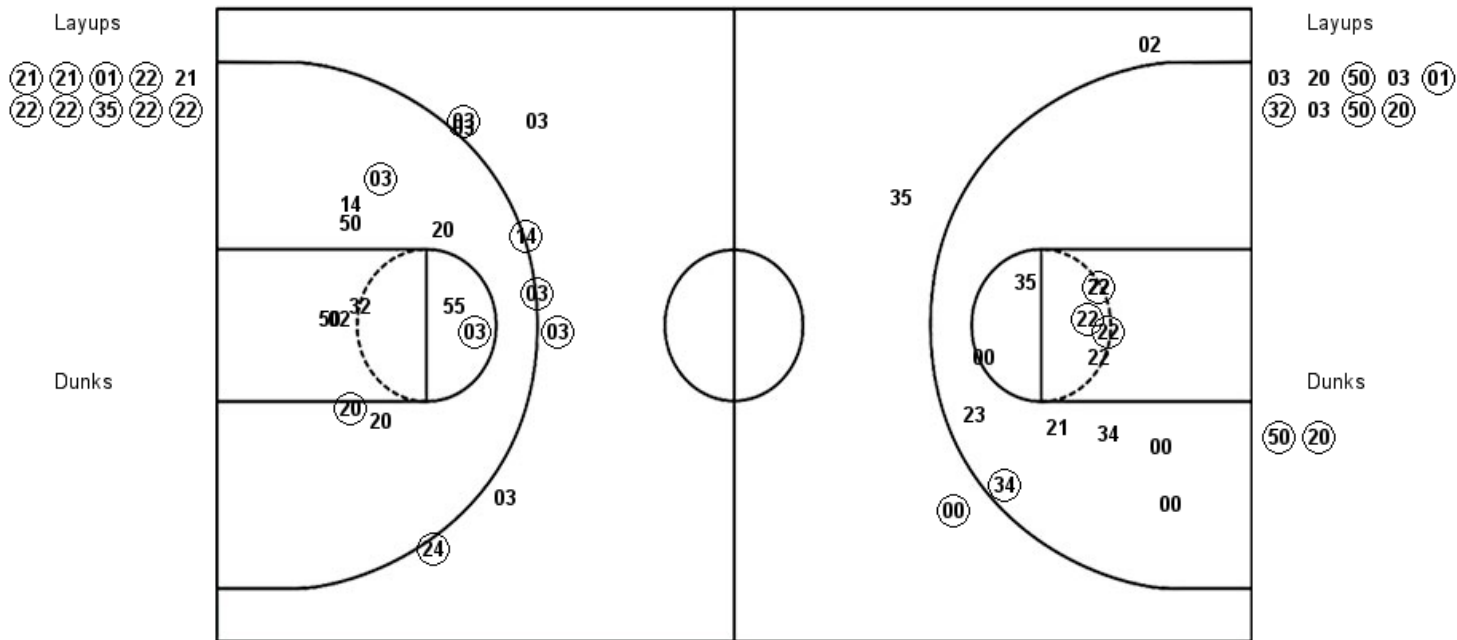
VISITORS: Purdue	Time	Score	HOME: Wisconsin
3 EDWARDS, CARSEN			0 TRICE, D'MITRIK
14 CLINE, RYAN			21 IVERSON, KHALIL
20 EASTERN, NOJEL			22 HAPP, ETHAN
24 EIFERT, GRADY			34 DAVISON, BRAD
50 WILLIAMS, TREVION			35 REUVERS, NATE
	05:00	-	SUB OUT: KING, KOBE
	05:00		SUB IN: IVERSON, KHALIL
SUB OUT: 50 WILLIAMS, TREVION	02:00	77-79	
SUB IN: 32 HAARMS, MATT	02:00		
	00:38	79-79	SUB OUT: IVERSON, KHALIL
	00:38		SUB IN: KING, KOBE

Purdue 84, Wisconsin 80

Official Shot Chart
Purdue vs Wisconsin
PERIOD 1 Shots
January 12, 2019 at Kohl Center (Ab Nicholas Court) - Madison, WI

Wisconsin

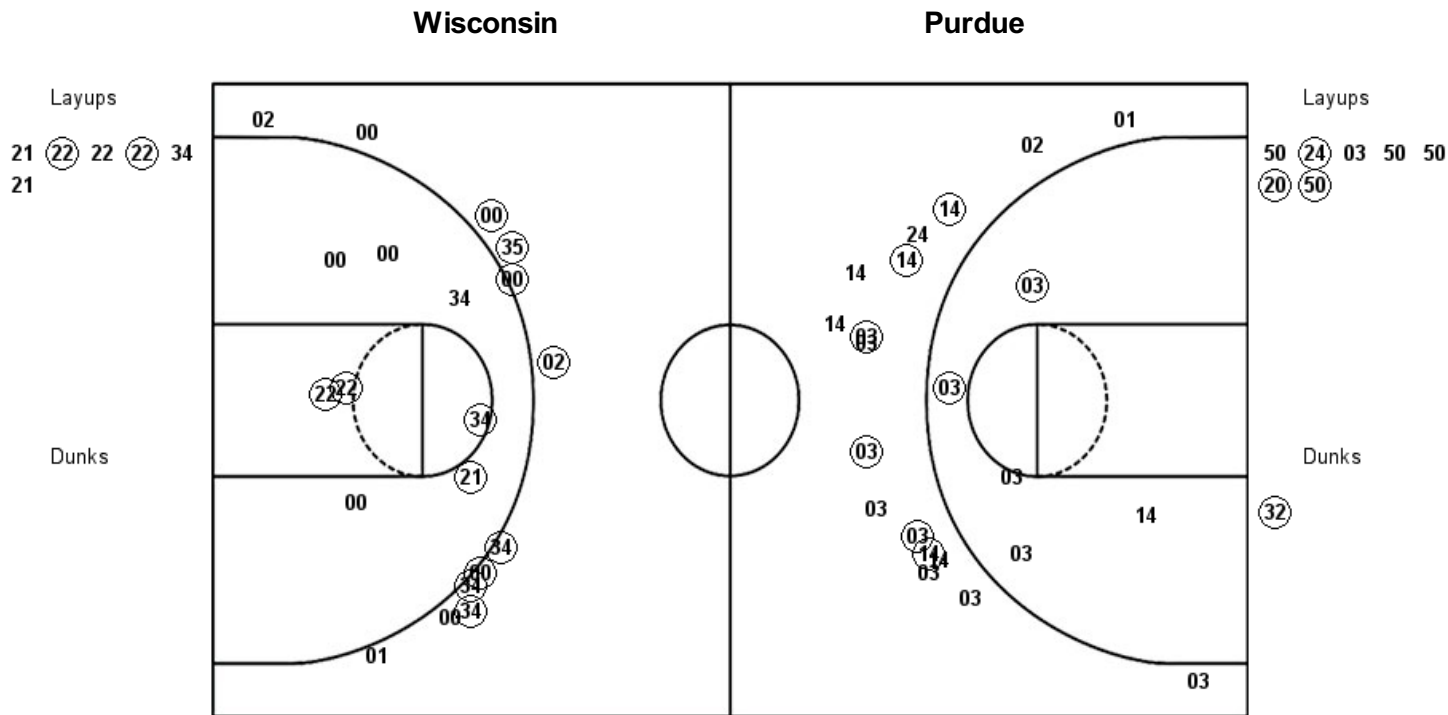
Purdue



WIS : Period 1	Made	Att	Pct
Layups	9	10	90.0
Dunks	0	0	0
2PT Field Goals	14	23	60.9
3PT Field Goals	1	3	33.3
Total Field Goals	15	26	57.7

PUR : Period 1	Made	Att	Pct
Layups	5	9	55.6
Dunks	2	2	100.0
2PT Field Goals	10	22	45.5
3PT Field Goals	5	8	62.5
Total Field Goals	15	30	50.0

Official Shot Chart
Purdue vs Wisconsin
PERIOD 2 Shots
 January 12, 2019 at Kohl Center (Ab Nicholas Court) - Madison, WI



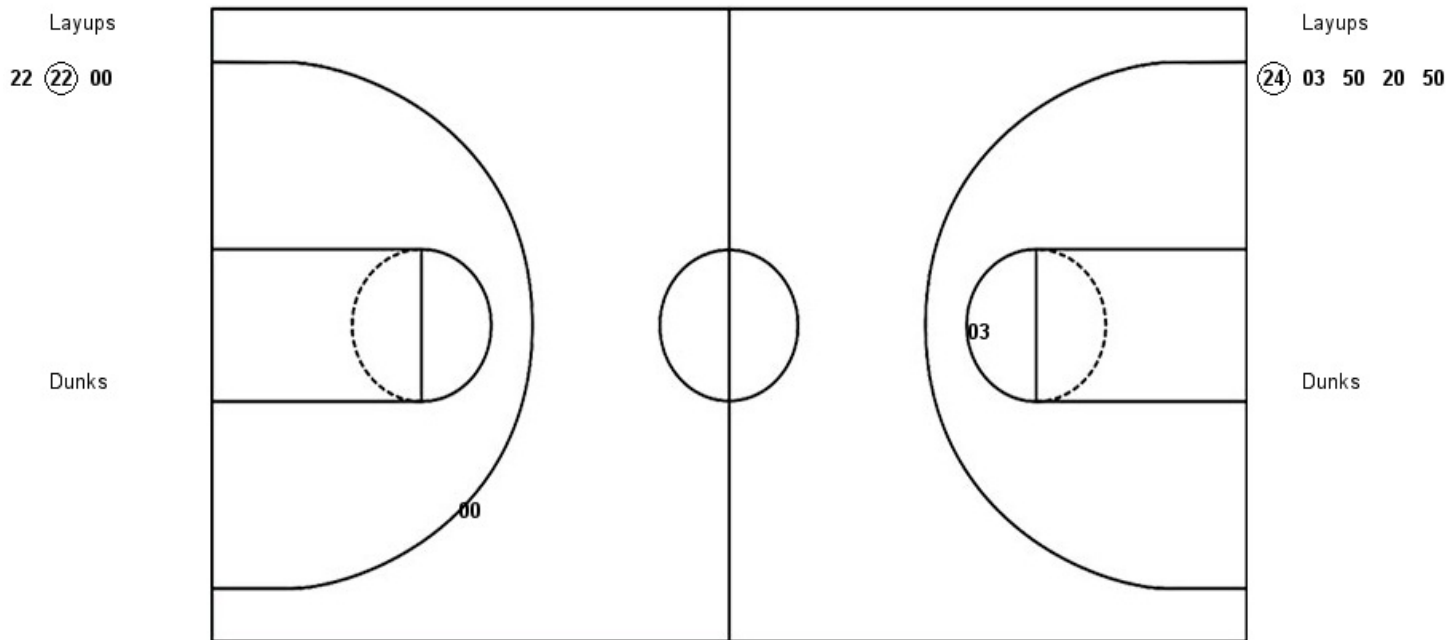
WIS : Period 2	Made	Att	Pct
Layups	2	6	33.3
Dunks	0	0	0
2PT Field Goals	6	14	42.9
3PT Field Goals	8	12	66.7
Total Field Goals	14	26	53.8

PUR : Period 2	Made	Att	Pct
Layups	3	7	42.9
Dunks	1	1	100.0
2PT Field Goals	6	13	46.2
3PT Field Goals	6	17	35.3
Total Field Goals	12	30	40.0

Official Shot Chart
Purdue vs Wisconsin
PERIOD 3 Shots
 January 12, 2019 at Kohl Center (Ab Nicholas Court) - Madison, WI

Wisconsin

Purdue

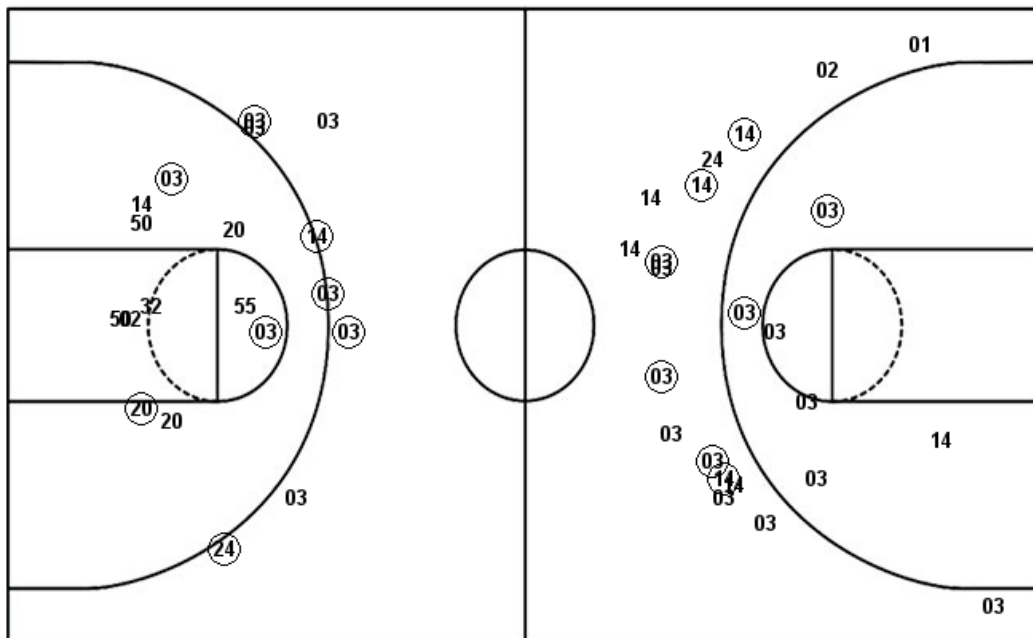


WIS : Period 3	Made	Att	Pct
Layups	1	3	33.3
Dunks	0	0	0
2PT Field Goals	1	3	33.3
3PT Field Goals	0	1	00.0
Total Field Goals	1	4	25.0

PUR : Period 3	Made	Att	Pct
Layups	1	5	20.0
Dunks	0	0	0
2PT Field Goals	1	6	16.7
3PT Field Goals	0	0	0
Total Field Goals	1	6	16.7

Official Shot Chart
Purdue vs Wisconsin
Purdue Team Shots
January 12, 2019 at Kohl Center (Ab Nicholas Court) - Madison, WI

Layups



Layups

03 20 (50) 03 (01)
 (32) 03 (50) (20) 50
 (24) 03 50 50 (20)
 (50) (24) 03 50 20
 50

Dunks

Dunks

(50) (20) (32)

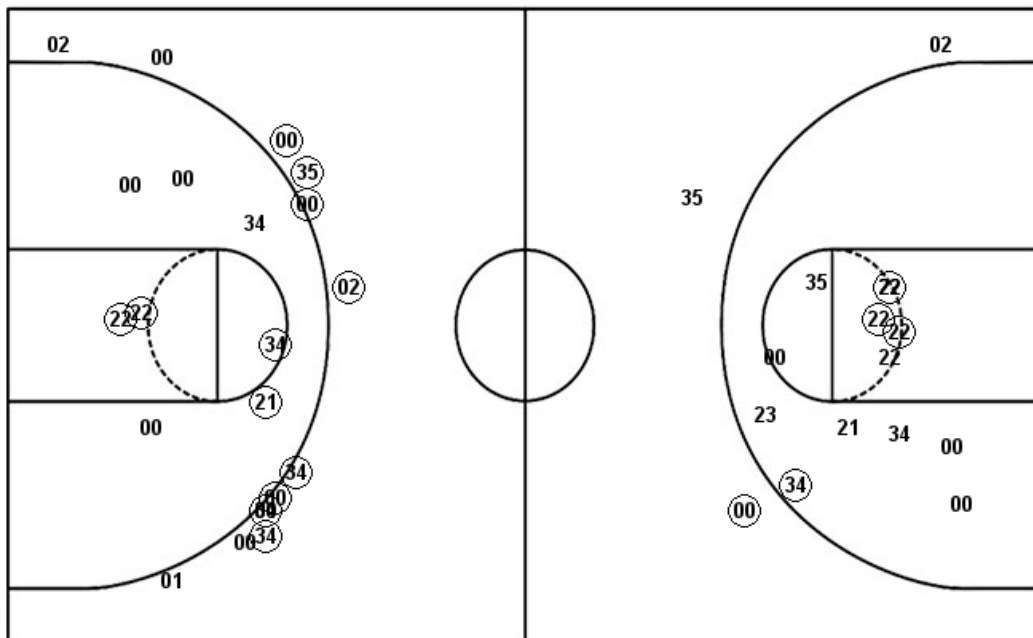
PUR : Period 1	Made	Att	Pct
Layups	5	9	55.6
Dunks	2	2	100.0
2PT Field Goals	10	22	45.5
3PT Field Goals	5	8	62.5
Total Field Goals	15	30	50.0

PUR : Period 2	Made	Att	Pct
Layups	3	7	42.9
Dunks	1	1	100.0
2PT Field Goals	6	13	46.2
3PT Field Goals	6	17	35.3
Total Field Goals	12	30	40.0

PUR : Period 3	Made	Att	Pct
Layups	1	5	20.0
Dunks	0	0	0
2PT Field Goals	1	6	16.7
3PT Field Goals	0	0	0
Total Field Goals	1	6	16.7

Official Shot Chart
Purdue vs Wisconsin
Wisconsin Team Shots
 January 12, 2019 at Kohl Center (Ab Nicholas Court) - Madison, WI

Layups



Layups

(21) (21) (01) (22) 21
 (22) (22) (35) (22) (22)
 21 (22) 22 (22) 34
 21 22 (22) 00

Dunks

Dunks

WIS : Period 1	Made	Att	Pct
Layups	9	10	90.0
Dunks	0	0	0
2PT Field Goals	14	23	60.9
3PT Field Goals	1	3	33.3
Total Field Goals	15	26	57.7

WIS : Period 2	Made	Att	Pct
Layups	2	6	33.3
Dunks	0	0	0
2PT Field Goals	6	14	42.9
3PT Field Goals	8	12	66.7
Total Field Goals	14	26	53.8

WIS : Period 3	Made	Att	Pct
Layups	1	3	33.3
Dunks	0	0	0
2PT Field Goals	1	3	33.3
3PT Field Goals	0	1	00.0
Total Field Goals	1	4	25.0